

# AZ2300

## 20 AMP MINIATURE POWER RELAY

### FEATURES

- Low cost
- 20 Amp switching
- 55 Amp inrush current
- Class B insulation system
- Quick-connect terminals
- UL, CUR file E44211



### CONTACTS

<b>Arrangement</b>	SPST (1 Form A) SPDT (1 Form C)
<b>Ratings</b>	Resistive load: Max. switched power: 450 W or 3300 VA Max. switched current: 20 A Max. switched voltage: 150* VDC or 400 VAC  * If switching voltage is greater than 30VDC, special precautions must be taken. Please contact the factory.
<b>UL, CUR</b>	NO: 15 A at 220 VAC (100 k operations) NC: 10 A at 220 VAC (100 k operations)
<b>Material</b>	Silver cadmium oxide
<b>Resistance</b>	< 50 milliohms initially (24 V, 1 A voltage drop method)

### COIL

<b>Power</b>	
<b>At Pickup Voltage (typical)</b>	441 mW
<b>Max. Continuous Dissipation</b>	1.65 W at 20°C (68°F) ambient 1.35 W at 40°C (104°F) ambient
<b>Temperature Rise</b>	60°C (108°F) at nominal coil voltage
<b>Temperature</b>	Max. 130°C (266°F) Class B

### NOTES

1. All values at 20°C (68°F).
2. Relay may pull in with less than "Must Operate" value.
3. Specifications subject to change without notice.

### GENERAL DATA

<b>Life Expectancy</b> <b>Mechanical</b> <b>Electrical</b>	Minimum operations 1 x 10 <sup>7</sup> 1 x 10 <sup>5</sup> at 15 A 220 VAC Res.
<b>Operate Time (typical)</b>	15 ms at nominal coil voltage
<b>Release Time (typical)</b>	10 ms at nominal coil voltage (with no coil suppression)
<b>Dielectric Strength (at sea level for 1 min.)</b>	2000 Vrms coil to contact 500 Vrms between open contacts
<b>Insulation Resistance</b>	1000 megohms min. at 500 VDC, 20°C 50% RH
<b>Dropout</b>	Greater than 10% of nominal coil voltage
<b>Ambient Temperature</b> <b>Operating</b> <b>Storage</b>	At nominal coil voltage -40°C (-40°F) to 70°C (158°F) -40°C (-40°F) to 130°C (266°F)
<b>Vibration</b>	0.062" DA at 10–55 Hz
<b>Shock</b> <b>Operating</b> <b>Non-operating</b>	20 g, 11 ms 1/2 sine (no false operation) 100 g, 11 ms 1/2 sine (no damage)
<b>Enclosure</b>	P.B.T. polyester
<b>Terminals</b>	Tinned copper alloy Quick-connect Note: Allow suitable slack on leads when wiring, and do not subject the terminals to excessive force.
<b>Max. Solder Temp.</b>	270°C (518°F)
<b>Max. Solder Time</b>	5 seconds
<b>Weight</b>	40 grams



**AMERICAN ZETTLER, INC.**

[www.azettler.com](http://www.azettler.com)

75 COLUMBIA • ALISO VIEJO, CA 92656 • PHONE: (949) 831-5000 • FAX: (949) 831-8642 • E-MAIL: SALES@AZETTLER.COM

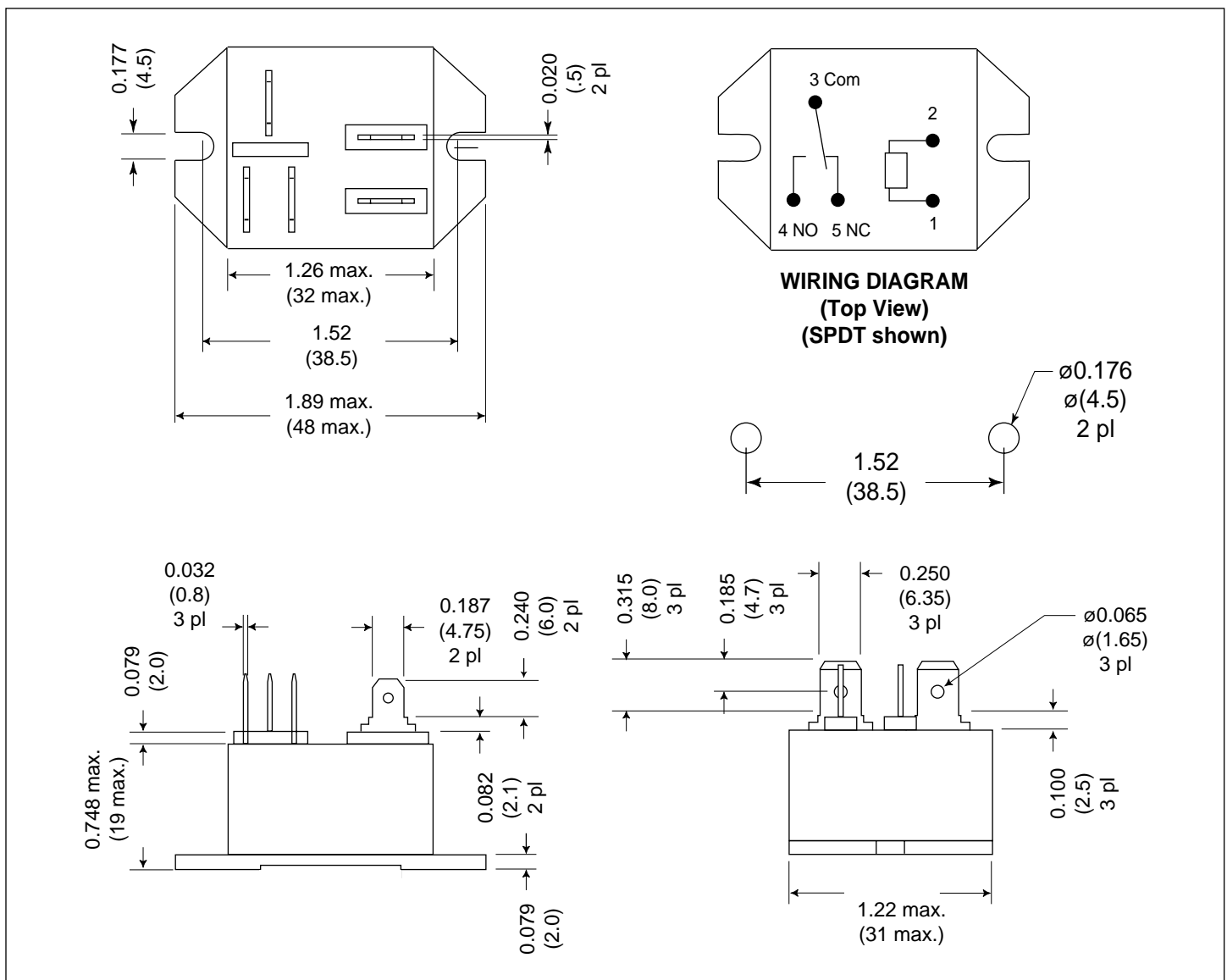
2/7/03W

# AZ2300

## RELAY ORDERING DATA

COIL SPECIFICATIONS				ORDER NUMBER	
Nominal Coil VDC	Must Operate VDC	Max. Continuous VDC	Coil Resistance $\pm 10\%$	Form A	Form C
6	4.2	8.0	40	AZ2300-1A-6D	AZ2300-1C-6D
12	8.4	16.2	160	AZ2300-1A-12D	AZ2300-1C-12D
24	16.8	32.0	640	AZ2300-1A-24D	AZ2300-1C-24D
48	33.6	64.0	2,560	AZ2300-1A-48D	AZ2300-1C-48D

## MECHANICAL DATA



Dimensions in inches with metric equivalents in parentheses. Tolerance:  $\pm .010$ "



**AMERICAN ZETTLER, INC.**

[www.azettler.com](http://www.azettler.com)

75 COLUMBIA • ALISO VIEJO, CA 92656 • PHONE: (949) 831-5000 • FAX: (949) 831-8642 • E-MAIL: SALES@AZETTLER.COM

2/7/03W