

XE900S World's Smallest Spread Spectrum Smart Transceiver

Description

The XE900SL10 breaks new ground in Smart Transceiver Technology. Never before has a 900 MHz, Spread Spectrum Transceiver with integral micro-controller been this small, just 1 inch square. This miniature size combined with extremely low power consumption make the XE900SL10 perfect for portable and battery powered applications.

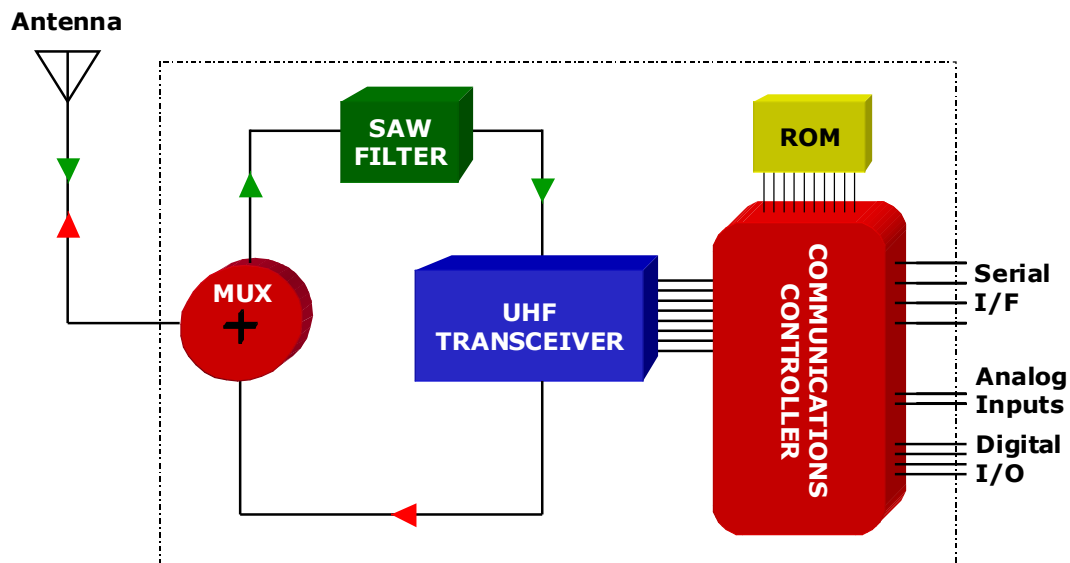
Xecom did not compromise of features to reduce the size. The XE900SL10 still supports Xecom's Count-Off feature enabling a scan of all 253 remote nodes in under 10 seconds. SensorOnAir is included so that sensors and control lines can utilize the transceivers communications controller in place of a second micro-controller.

The XE900SL10 transmits at up to 10 milliwatts and has a maximum receive sensitivity of -100 dBm. This insures that the XE900SL10 can support an indoor communications range of 200 feet through walls and ceilings. All of this while operating from a 3.3 volt power source. By virtue of its miniature package and low power consumption Xecom's XE900SL10 can be used when no other transceiver can be.

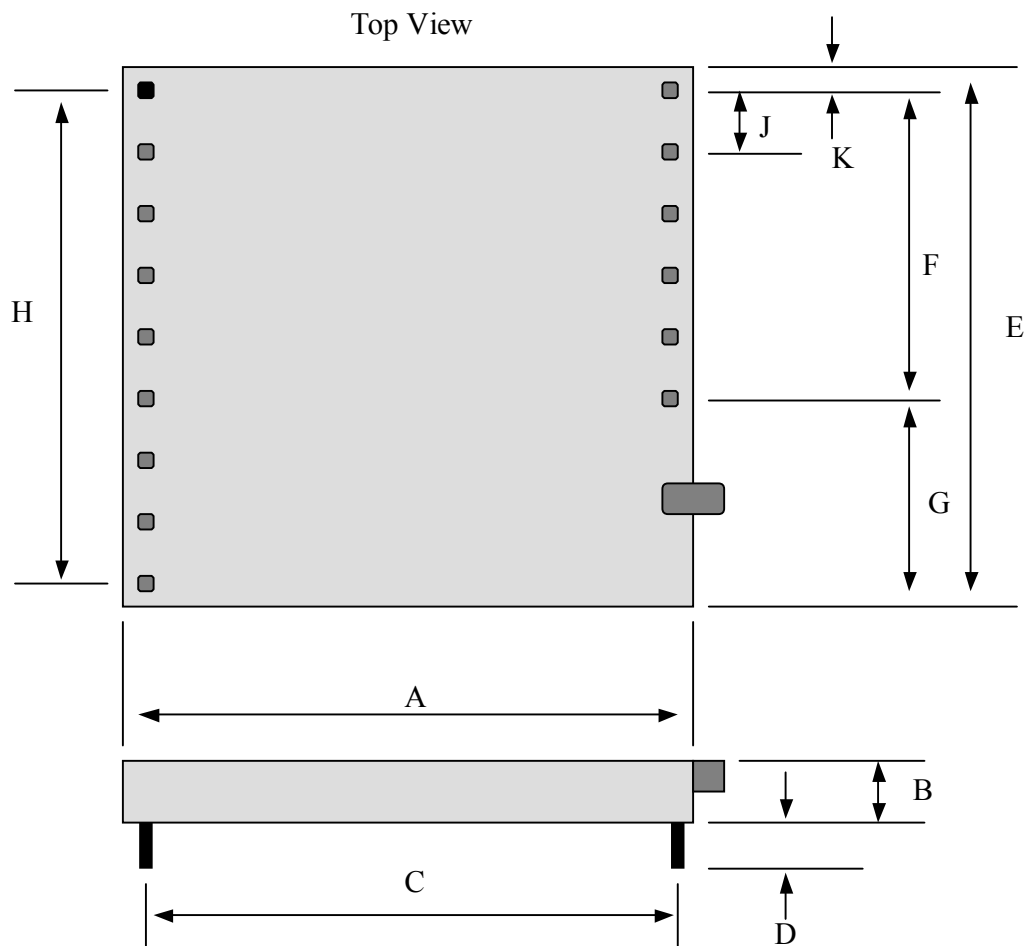
Features

- * Small Size: 1.0" by 1.0" by 0.26"
- * Serial Control and Configuration of the Wireless Link.
- * Supports a 254 node point-to-multipoint network
- * Output Power Programmable from 0 to 10 mW;
- * Maximum Receiver Sensitivity -100 dBm
- * Obstructed signal range to 200 feet;
- * Wireless Data Rate 76.8K bps, half-duplex;
- * Power Consumption:
50 mA @ 3.3 Volts when transmitting at 1 mW
15 mA at idle
<10 uA in Power Down Mode
- * SensorOnAir™ allows direct connection of sensors to the Smart Transceiver
- * Count Off™ allows the master node to download the status of all nodes in under 10 seconds.
- * Operating Temperature Range of -40 to +85 C
- * FCC Part 15 Registered

XE900SL10 Block Diagram

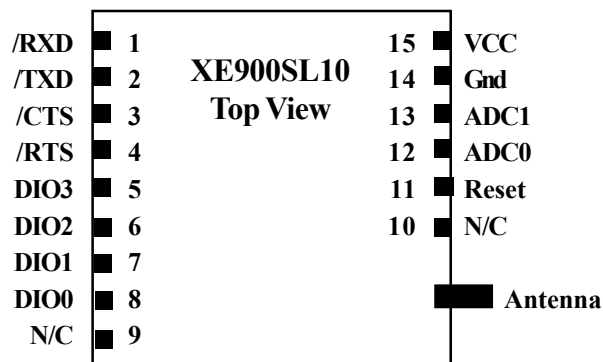


XE900S MECHANICAL SPECIFICATIONS



Dimension	Description	Inches	MM
A	Module Width	1.00	25.40
B	Max.Module Thickness	0.30	7.62
C	Row to Row	0.90	22.86
D	Minimum Lead Length	0.10	2.54
E	Module Length	1.00	25.40
F	Pin 10 to Pin15	0.50	12.70
G	Pin 10 to Edge	0.40	10.16
H	Pin 1 to Pin 9	0.80	20.32
J	Pin to Pin Spacing	0.10	2.54
K	Pin 1, 9, or 15 to Edge	0.10	2.54

XE900S PIN CONFIGURATION



SIGNAL	PINS	DESCRIPTION
/RXD	1	Received Data is the data output from the XE900SL10.
/TXD	2	Transmit Data is the data input to the XE900SL10.
/CTS	3	Clear to Send provides hardware flow control from the XE900SL10. The XE900SL10 drives /CTS high to signal the host to temporarily stop the flow of data into /TXD.
/RTS	4	Request to Send provides hardware flow control from the host system. The host system drives /RTS high to signal the XE900SL10 to temporarily stop the data flow onto /RXD.
DIO3	5	DIO0 may be programmed as either a digital input or digital output. It connects directly to the communications controller in the XE900SL10.
DIO2	6	DIO2 may be programmed as either a digital input or digital output. It connects directly to the communications controller in the XE900SL10.
DIO1	7	DIO1 may be programmed as either a digital input or digital output. It connects directly to the communications controller in the XE900SL10.
DIO0	8	DIO0 may be programmed as either a digital input or digital output. It connects directly to the communications controller in the XE900SL10.
N/C	9	No Connection
N/C	10	No Connection
Reset	11	Provides an active high hardware reset to the XE900SL10.
ADC0	12	Analog Input 0 to the XE900SL10's communications controller. ADC0 connects to an internal 10-bit Analog to Digital Convertor. ADC0 may also be configured as a digital input if no analog inputs are required.
ADC1	13	Analog Input 1 to the XE900SL10's communications controller. ADC1 connects to an internal 10-bit Analog to Digital Convertor. ADC0 may also be configured as a digital input if no analog inputs are required.
Ground	14	Common voltage reference for the XE900SL10.
VCC	15	3.3 Volt power for the XE900SL10.

ABSOLUTE MAXIMUM RATINGS

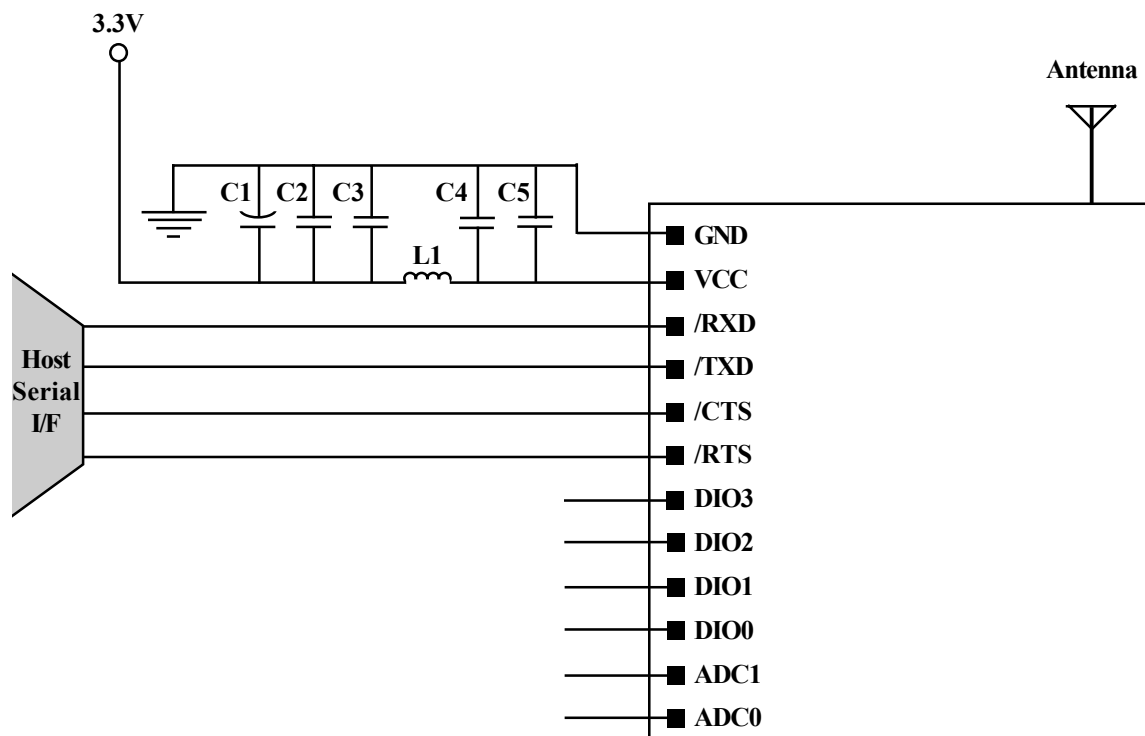
VCC	3.9 Volts
Storage Temperature	-55° C to +125° C
Operating Temperature Range	-40° C to +85° C

WARNING: Exceeding any of these ratings will void the warranty and may damage the device

XE900SL10 ELECTRICAL SPECIFICATIONS

Parameter	Min	Typ	Max	Units	Comments
VCC	2.7	3.3	3.6	Volts	Transceiver power
ICC		50		mA	Transmit Mode (1 mW output)
		30		mA	Receive Mode
		15		mA	Idle Mode
			10	uA	Sleep Mode
Output Power: XE900S-10	0		10	mW	50 Ohm Load
Wireless Receive Sensitivity		-100		dBm	
Frequency Hopping Channels		63			
Frequency Range	902		928	MHz	
Communications Range		200		ft.	
Antenna Output Impedance		50		Ohms	
Latency		TBD		ms	
Voh	2.25			Volts	VCC=3.3 Volts
Vol			0.75	Volts	VCC=3.3 Volts
Vih	2.25			Volts	VCC=3.3 Volts
Vil			0.75	Volts	VCC=3.3 Volts

XE900SL10 TYPICAL CONNECTION DIAGRAM



Parts List for XE900SL10 Typical Connection Diagram

Reference Designation	Qty	Description
C1	1	Capacitor, Electrolytic, 100 ufd, 10 Volts
C2, C4	2	Capacitor 0.1 ufd, 10 Volts
C3, C5	2	Capacitor 47 pfd, 10 Volts
L1	1	Coilcraft 0603HC-7N5XJB
Antenna *	1	50 Ohm, 1/4 Wave

* The Antenna connector on the XE900SSL10 is a Male MMCX connector. An femle MMCZ to Female SMA adapter will be need for the antenna connection

XE900SL10 COMMUNICATIONS CONTROLLER

The XE900SL10 uses an internal micro-controller to control communications. This micro-controller manages the interface to the host system, determines when the communications link is available, and formats data for the RF communications.

HOST INTERFACE

There are two primary interfaces between the XE900SL10 and the system host; the serial interface and the direct sensor interface supported by the SensorOnAir™ feature. Management of both interfaces is the responsibility of the communications controller.

Serial Interface

A 4-signal serial interface links the host to the XE900SL10. For most applications the XE900SL10 acts as a DCE. Control and configuration of the XE900SL10 takes place through the serial interface using modem-like AT commands. Serial data rates from 1200 bits per second to 115.2K bits per second are supported. The serial interface signals are listed below.

- /TXD - Transmit Data; the input to the XE900SL10 for AT commands and Data to be transmitted on the wireless network.
- /RXD - Received Data; the output from the XE900SL10 for received RF data and responses to AT commands.
- /RTS - Request to Send, provides the hardware flow control input to the XE900SL10. The DTE removes RTS to stop the XE900S from sending more data on the RXD line.
- /CTS - Clear to Send, is the hardware flow control output from the XE900SL10. The XE900SL10 deactivates Clear to Send to advise then host to stop inputting data on the TXD lead.

XE900SL10 AT Command Format

AT commands issued to the XE900SL10 follow a strict format. Each command begins with the prefix AT and ends with a carriage return. The XE900SL10 communications controller accepts commands at data rates from 1200 to 115,200 bps. The default serial data rate is 9600 bps and can be changed using register S-23. The modem uses the AT command prefix to automatically determine the parity of the incoming characters.

Command Prefix - Each command, except the A/ command, begins with the AT prefix. The "A" and "T" may be either both upper case or both lower case but cannot be of different cases. The prefix identifies parity of the commands sent to the XE900SL10 by comparing the parity bits of the "A" and the "T" characters.

Command Line - Commands may be strung together in a single command line of up to 36 characters. Commands in the command string are executed in the sequence they appear.

Omitted Parameters - Most commands include a parameter which determines the function setting. When the command parameter is omitted from the command string, it is assumed to be a 0.

Result Codes - A result code is normally issued after each action. Result codes may be provided as full words, one or two digit numeric codes, or may be disabled all together. Each result code ends with a carriage return when numeric result codes are chosen. When full word result codes are chosen, a Line Feed and Carriage Return precede and follow each result code.

Disconnect Sequence - A three character sequence initiates a disconnect of the wireless link. The sequence “~” is assigned to disconnect the link.

DIRECT CONNECTION OF SENSORS:

SensorOnAir™

Sensors can be connected directly to the XE900SL10 without requiring an applications controller. In this SensorOnAir™ configuration the XE900SL10 communications controller controls the operation of the sensors.

Sensor I/O Lines

SensoronAir controls the operation of 6 I/O lines to the XE900SL10. This includes 2 analog inputs, ADC0 and ADC1, and 4 digital I/O lines, DIO0, DIO1, DIO2, and DIO3. ADC0 and ADC1 are connected to a 12-bit analog to digital converter and using a 2.5 volt reference derived from VCC as their reference voltage. The digital I/O lines can be programmed to act as either inputs or outputs.

XE900SL10 COMMUNICATIONS CONTROLLER

Configuring the XE900SL10 for Sensor Operation

All SensorOnAir control functions for the analog inputs and digital I/O's are performed by the communications controller within the XE900SL10. Modem-like AT commands loaded through the serial interface, program the functions of the analog and digital I/O lines. The AT commands used to program the SensorOnAir functions are then stored in the XE900SL10's Flash memory. This allows the XE900SL10 to be first programmed and then installed in the application. The communications controller uses the information stored in Flash memory to control the analog and digital I/O lines.

SensorOnAir Commands™

Below is a list of the AT commands used to program the direct control of sensors using the communications controller in the XE900SL10.

S107 - Defines the function of the programmable I/O lines. The two analog input lines, ADC0 and ADC1, can also be defined as digital I/O lines if needed. The four programmable digital I/O lines, DIO0, DIO1, DIO2, and DIO3; can be set as either inputs or outputs. The value of this command is stored in flash memory within the XE900SL10.

AT&IAn? - This command allows a local host to read the value of Analog Input "n."

AT&IDn? - This command allows a local host to read the status of Digital I/O "n."

AT&IDn=z - This command allows a local host equipment to set the condition of the local digital output "n." When z=0 the output is set to a logic low; when z=1 the output is set to a logic high.

AT#IxxxAn? - This command allows the value of Analog Input "n" on node address "xxx" to be read remotely.

AT#IxxxDn? - This command allows the status of Digital I/O "n" on node address "xxx" to be read remotely

AT#IxxxDn=z - This command allows the condition of the local digital output "n" on node address "xxx" to be set remotely. When z=0 the output is set to a logic low; when z=1 the output is set to a logic high.

WIRELESS COMMUNICATIONS

The communications controller manages the RF Link. This includes the frequency hopping algorithm for spread spectrum operation; collision avoidance, node addressing, and packetizing data. The communications controller allows support for point-to-point, point-to-multipoint or multipoint networks.

Carrier Sense Multiple Access (CSMA)

To prevent collisions between network nodes the XE900SL10 uses a Carrier Sense Multiple Access protocol for each network transceiver. In normal communications all nodes, including the Master node in a point-to-multipoint network, listen for communications activity before initiating a session. If a wireless link already exists, the transceiver waits until that session is complete before initiating a wireless link.

Data Packets

All data presented by the system host is placed into packets by the XE900SL10 communications controller for transmission across the wireless link. These packets provide addressing and error correction for the wireless communications. The communications controllers in the place the data in packets only for the wireless link. The data is extracted from the packets before being sent out the serial interface.

Multipoint Network

System designers using the XE900SL10 can create a point-to-multipoint network with up to 253 remote nodes. The master node is assigned address 0. The remote nodes are assigned address from 1 to 253. To insure the network can be operated efficiently, Xecom created Count-Off. Count-Off allows the master node to poll the entire network in less than 10 seconds

XE900SL10 COMMUNICATIONS CONTROLLER

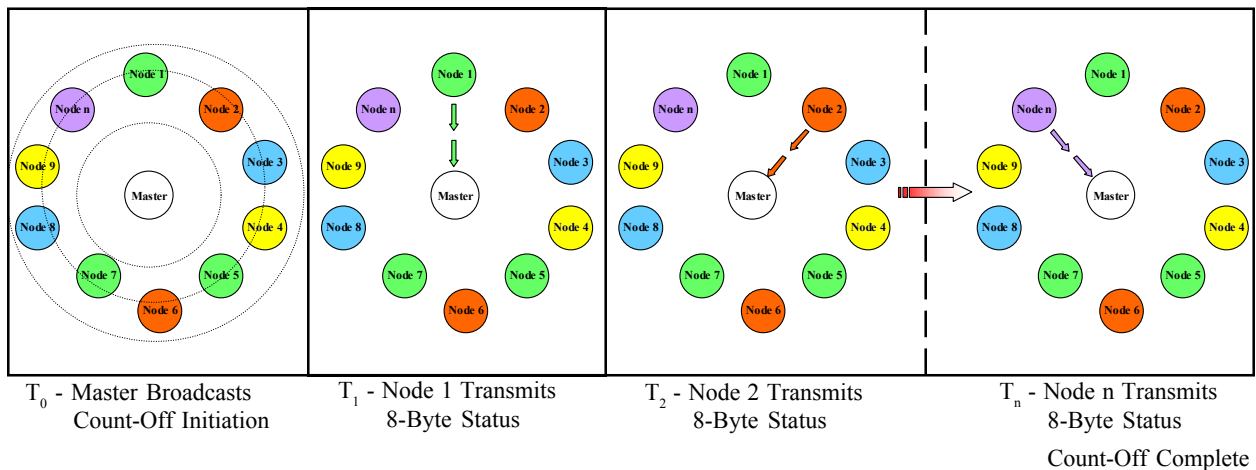
Count-Off Function

The Count-Off function permits the master Node in a point-to-multipoint system to quickly check the status of all network nodes. It creates a temporary time division multiplexing scheme which permits each node to report its status without the handshaking sequence normally required for a wireless data exchange.

The Count-Off sequence is initiated by an AT command, AT#C: or AT#C=, from the host system. The Master node broadcasts the Count-Off command to all network nodes. Upon receipt of the Count-Off broadcast each remote node initializes an internal timer. Then in sequence by address each node sends an 8-byte status message to the Master. The status message is programmed with the AT#E: or AT#E= command. That status byte is passed to the host system.

Using Count-Off network reporting will be completed in less than 10 seconds. Based on the status information the host can then elect to service any of the remote nodes.

COUNT-OFF SEQUENCE



AT COMMANDS

An asterisk indicates the factory default

- A Answer Command** - forces the smart transceiver respond to a summons from another wireless device.
- Dn Initiate a Wireless Link** - attempts to establish a connection with the transceiver at address n.
- En Echo Characters** - determines if the XE900SL10 will echo the characters received on its serial interface during command mode.
n=0 Characters not Echoed
n=1 Characters Echoed *
- In Identification** - displays product identification code.
n=0 Display Product Code
n=1 Display Product Name
n=2 Display Model Number
n=3 Display Copyright
n=4 Display Firmware Revision
- Qn Result Code Display** - determines if results codes will be displayed.
n=0 Display Result Codes *
n=1 Do not Display Result Codes
- Sn= Set Value of Register Sn**
- Sn? Read Value of Register Sn**
- Vn Response Type** - selects Full Word or Numeric responses
n=0 Numeric Responses
n=1 Full Word Responses *
- Zn Reset** - executes a soft Reset
n=0 Reset to Values Stored in User Profile 0 *.
n=1 Reset to Values Stored in User Profile 1
- &F Restore Factory Settings** - returns all configuration commands and registers to their factory default values.
- &IAn? Read Local Analog Input “n”** - This command allows the host equipment to read the values of the local analog inputs.
n=0 Read input ADC0
n=1 Read input ADC1
- &IDn? Read Local Digital Input “n”** - This command allows the host equipment to read the status of the local digital inputs.
n=0 Read input DIO0
n=1 Read input DIO1
n=2 Read input DIO2
n=3 Read input DIO3
n=4 Read input DIO4 (pin shared with ADC0)
n=5 Read input DIO5 (pin shared with ADC1)
- &IDn=z Set Local Digital Output “n”** - This command allows the host equipment to set the condition of the local digital outputs. When z=0 the output is set to a logic low; when z=1 the output is set to a logic high.
n=0 Set output DIO0
n=1 Set output DIO1
n=2 Set output DIO2
n=3 Set output DIO3
n=4 Set output DIO4 (pin shared with ADC0)
n=5 Set output DIO5 (pin shared with ADC1)
- &Kn Flow Control** - selects the type of flow control to be used between the system host and the XE900SL10
n=0 Flow Control Disabled
n=3 RTS/CTS, hardware Flow Control
n=4 XON/XOFF, in-band Flow Control
- &V View Active Configuration** - sends the active configuration data to the system host.
- &Wn Store Current Configuration** - loads the current XE900SL10 configuration into either User Profile 0 or User Profile 1.
n=0 load configuration into User Profile 0
n=1 load configuration into User Profile 1
- #B Wireless Broadcast Mode** - initiates wireless broadcast mode for diagnostic purposes.
- #C: Count-Off Request (ASCII)** - Initiates a “count-off” sequence in the network with node status to be reported in ASCII format.
- #C= Count-Off Request (Hex)** - Initiates a “count-off” sequence in the network with node status to be reported in hexadecimal format.

AT COMMANDS

#E: Count-Off Response (ASCII) - Programs the nodes 8 byte response to a “count-off” request from the network hub in ASCII format.

#E= Count-Off Response (Hex) - Programs the nodes 8 byte response to a “count-off” request from the network hub in hexadecimal format.

#IxxxAn? Read Analog Input “n” at Node Address xxx - This command allows analog input values at any node to be read remotely.

n=0 Read input ADC0

n=1 Read input ADC1

#IxxxDn? Read Digital Input “n” at Node Address xxx - This command allows the status of the digital inputs at any node to be read remotely.

n=0 Read input DIO0

n=1 Read input DIO1

n=2 Read input DIO2

n=3 Read input DIO3

n=4 Read input DIO4 (pin shared with ADC0)

n=5 Read input DIO5 (pin shared with ADC1)

#IxxxDn=z Set Digital Output “n” at Node Address xxx

- This command allows the condition of the digital outputs to be modified remotely. When z=0 the output is set to a logic low; when z=1 the output is set to a logic high.

n=0 Set output DIO0

n=1 Set output DIO1

n=2 Set output DIO2

n=3 Set output DIO3

n=4 Set output DIO4 (pin shared with ADC0)

n=5 Set output DIO5 (pin shared with ADC1)

#Ln Check RSSI Level - Displays current Wireless received signal levels

n=0 Display a single value *

n=1 Display 4 Values

n=2 Display continuous values

XE900SL10 Responses

<u>Numeric</u>	<u>Full Word</u>	<u>Description</u>
0	OK	Successfully executed command line
1	CONNECT RF	Wireless Connection Established
2	RING	Wireless Link Request Detected
3	DISCONNECT	Failed to Establish or Lost Wireless Link
4	ERROR	Error in command line
7	BUSY	Link Request Time Out has occurred
9	WAIT	Wireless Link is not available

XE900SL10 Configuration Registers

<p>S0 Answer Wireless Link Request - S0 determines if the XE900SL10 will automatically respond to a wireless link request.</p> <p>S0=0 No Automatic response to link requests</p> <p>S0=1 Automatically respond to link requests</p>	<p>S105 XE900M ID Number - S105 sets the ID number for the XE900S. Each unit on the Base Access Network is required to have a unique ID number. The ID number of the Master Node should always be set to 1.</p> <p>Range: 2-254</p>
<p>S2 Wireless Disconnect Character - S2 sets the ASCII character to be used in the link disconnect sequence. The default character is the tilde "~".</p> <p>Range: 0-255</p> <p>Default: 126</p>	<p>S106 Set Noise Threshold - S106</p> <p>S107 I/O Configuration - S107 is a bit-mapped register which defines the local programmable I/O lines.</p> <p>Bit 0 = 0 - ADC0 and ADC1 used as Programmable I/O = 1 - ADC0 and ADC1 defined for Analog use</p>
<p>S12 Disconnect Guard Timer - S12 sets the guard timer in milliseconds before and after the disconnect sequence. If any characters other than the disconnect sequence are received within the window defined by S12 the disconnect request will be ignored..</p> <p>Range: 0-255</p> <p>Default: 40</p> <p>Units: Milliseconds</p>	<p>Bit 1 = reserved</p> <p>Bit 2 = 0 - DIO0 used as an output = 1 - DIO0 used as an input</p> <p>Bit 3 = 0 - DIO1 used as an output = 1 - DIO1 used as an input</p> <p>Bit 4 = 0 - DIO2 used as an output = 1 - DIO2 used as an input</p>
<p>S14 Bit-mapped Register - S14 stores the values of the ATE, ATQ and ATV commands.</p>	<p>Bit 5 = 0 - DIO3 used as an output = 1 - DIO3 used as an input</p>
<p>S21 Bit-mapped Register - S21 stores the values of the AT&D, AT&C and XY&S commands.</p>	<p>Bit 6 = 0 - DIO4 used as an output (Bit 0 = 0) = 1 - DIO4 used as an input</p>
<p>S23 Serial Interface Data rate - S23 stores the serial interface data rate.</p> <p>Range 1-10</p> <p>1 = Set serial data rate to 1200 BPS</p> <p>2 = Set serial data rate to 2400 BPS</p> <p>3 = Set serial data rate to 4800 BPS</p> <p>4 = Set serial data rate to 9600 BPS*</p> <p>5 = Set serial data rate to 14400 BPS</p> <p>6 = Set serial data rate to 19200 BPS</p> <p>7 = Set serial data rate to 28800 BPS</p> <p>8 = Set serial data rate to 38400 BPS</p> <p>9 = Set serial data rate to 57600 BPS</p> <p>10 = Set serial data rate to 115200 BPS</p>	<p>Bit 7 = 0 - DIO5 used as an output (Bit 0 = 0) = 1 - DIO5 used as an input</p> <p>Default: 193</p> <p>S108 Transmit Level Control - S108 sets the transmit level</p> <p>Range: 0-3</p> <p>0 -5 dBm</p> <p>1 0 dBm</p> <p>2 5 dBm</p> <p>3 10 dBm</p> <p>Default: 0</p>
<p>S39 Bit-mapped Register - S29 stores the value of the AT&K command.</p>	

FCC PART 15 REGULATIONS

FCC Part 15 Certification

The XE900SL10 have been certified per FCC Part 15 rules for integration into OEM products without further testing or certification. This certification is your assurance that the XE900SL10 will not cause harmful interference.

Labeling Requirements

FCC rules require the Original Equipment Manufacturer using the XE900SL10 to place an appropriate label on the outside of the finished equipment. the label must be clearly visible and include the information shown below.

Contains Transmitter Module FCC ID: xxxxxxxxxx

WARNING:

This device complies with Part 15 of the FCC Rules. Its operation is subject to the following conditions:

- (1) This device may not cause harmful interference.
- (2) This device must accept any received interference including interference that may cause undesired operation.

Limitations

The XE900SL10 is registered under FCC Part 15 Rules. To utilize this registration on your OEM System you must follow the applications circuit provided in this data sheet and use one of the listed antennas. Any changes or modifications to the recommended circuit must be approved by Xecom. Failure to seek Xecom's approval for modifications could void certification of the end product.

Warning: RF Exposure

The XE900SL10 is approved for mobile, base station and portable applications. A minimum separation of 20 centimeters should be maintained between the antenna and the equipment operator. For portable applications check the minimum separation distances defined in the approved antenna list. To ensure compliance, operation at distances closer than those defined is not recommended.

The Warning message above must be included in the user Manual for the end product.

Terms of Sale

Devices sold by XECOM are covered by the warranty provisions appearing in its Terms of Sale only. XECOM makes no warranty, express, statutory, implied, or by description regarding the information set forth herein, or regarding the freedom of the described devices from patent infringement. XECOM makes no warranty of merchantability or fitness for any purposes. XECOM reserves the right to discontinue production and change specifications and prices at any time and without notice. This product is intended for use in normal commercial applications. Applications requiring extended temperature range, unusual environmental requirements, or high reliability applications, such as military, medical life-support or life-sustaining equipment, are specifically not recommended without additional processing and authorization by XECOM for such application.

Xecom assumes no responsibility for the use of any circuitry other than circuitry embodied in a Xecom product. No other circuits, patents, or licenses are implied.

Life Support Policy

Xecom's products are not authorized for use as Critical Components in Life Support Devices or Systems.

Life Support Devices or Systems are devices or systems which, (a) are intended for surgical implant into the body, or (b) support or sustain life, and whose failure to perform, when properly used in accordance with instructions provided in the labeling, can be reasonably expected to result in significant injury to the user.

A Critical Component is any component of a life support device or system whose failure to perform can be reasonably expected to cause failure of the life support device or system, or to affect its safety or effectiveness.

Copyright, Xecom © 2003

While Xecom, Inc. has made every effort to ensure that the information presented here is accurate, Xecom will not be liable for any damages arising from errors or omission of fact. Xecom reserves the right to modify specifications and/or prices without notice. Product mentioned herein are used for identification purposes only and may be trademarks and/or registered trademarks of their respective companies.



Xecom Incorporated
374 Turquoise Street, Milpitas, CA 95035
Ph:408-942-2200 Fax:408-942-1346 E-Mail: info@xecom.com