



**W6692A**

**PCI Bus ISDN S/T-Controller**

**Data Sheet**



***W6692A PCI ISDN S/T-Controller***

**The information described in this document is the exclusive intellectual property of Winbond Electronics Corp and shall not be reproduced without permission from Winbond.**

**Winbond is providing this document only for reference purposes for W6692A-based system design. Winbond assumes no responsibility for errors or omissions. All data and specifications are subject to change without notice.**



## W6692A PCI ISDN S/T-Controller

### TABLE OF CONTENTS

1. GENERAL DESCRIPTION.....	8
2. FEATURES.....	8
3. PIN CONFIGURATION .....	9
4. PIN DESCRIPTION.....	12
5. SYSTEM DIAGRAM AND APPLICATIONS.....	15
6. BLOCK DIAGRAM.....	16
7. FUNCTIONAL DESCRIPTIONS.....	17
7.1 MAIN BLOCK FUNCTIONS.....	17
7.2 LAYER 1 FUNCTIONS DESCRIPTIONS .....	18
7.2.1 S/T Interface Transmitter/Receiver .....	18
7.2.2 Receiver Clock Recovery And Timing Generation.....	22
7.2.3 Layer 1 Activation/Deactivation .....	22
7.2.3.1 States Descriptions And Command/Indication Codes .....	22
7.2.3.2 State Transition Diagrams.....	24
7.2.4 D Channel Access Control.....	28
7.2.5 Frame Alignment.....	28
7.2.5.1 FAinfA_1fr .....	29
7.2.5.2 FAinfB_1fr .....	29
7.2.5.3 FAinfD_1fr .....	29
7.2.5.4 FAinfA_kfr .....	29
7.2.5.5 FAinfB_kfr .....	29
7.2.5.6 FAinfD_kfr .....	30
7.2.5.7 Faregain.....	30
7.2.6 Multiframe Synchronization.....	30
7.2.7 Test Functions .....	31
7.3 SERIAL INTERFACE BUS .....	33
7.4 B CHANNEL SWITCHING .....	33
7.6 D CHANNEL HDLC CONTROLLER.....	35
7.6.1 D Channel Message Transfer Modes.....	36
7.6.2 Reception of Frames in D Channel .....	36
7.6.3 Transmission of Frames in D Channel.....	37
7.7 B CHANNEL HDLC CONTROLLER.....	38
7.7.1 Reception of Frames in B Channel .....	38
7.7.2 Transmission of Frames in B Channel.....	39
7.8 GCI MODE SERIAL INTERFACE BUS.....	40
7.8.1 GCI Mode C/10 Channel Handling .....	41
7.8.2 GCI Mode Monitor Channel Handling.....	41
7.9 PCI/MP INTERFACE CIRCUIT .....	42
7.9.1 PCI Slave Mode And Configuration Serial EEPROM .....	42
7.9.2 8-bit Microprocessor Interface .....	44
7.10 PERIPHERAL CONTROL.....	44
8. REGISTER DESCRIPTIONS .....	46

**W6692A PCI ISDN S/T-Controller**

8.1 CHIP CONTROL AND D_CH HDLC CONTROLLER .....	46
8.1.1 D_ch receive FIFO D_RFIFO Read Address 00H/00H .....	48
8.1.2 D_ch transmit FIFO D_XFIFO Write Address 04H/01H .....	48
8.1.3 D_ch command register D_CMDR Write Address 08H/02H .....	49
8.1.4 D_ch Mode Register D_MODE Read/Write Address 0CH/03H .....	49
8.1.5 Timer 1 Register TIMR1 Read/Write Address 10H/04H .....	50
8.1.6 Interrupt Status Register ISTA Read_clear Address 14H/05H .....	51
8.1.7 Interrupt Mask Register IMASK Read/Write Address 18H/06H .....	52
8.1.8 D_ch Extended Interrupt Register D_EXIR Read_clear Address 1CH/07H .....	52
8.1.9 D_ch Extended Interrupt Mask Register D_EXIM Read/Write Address 20H/08H .....	53
8.1.10 D_ch Status Register D_XSTA Read Address 24H/09H .....	53
8.1.11 D_ch Receive Status Register D_RSTA Read Address 28H/0AH .....	54
8.1.12 D_ch SAPI Address Mask D_SAM Read/Write Address 2CH/0BH .....	54
8.1.13 D_ch SAPI1 Register D_SAP1 Read/Write Address 30H/0CH .....	55
8.1.14 D_ch SAPI2 Register D_SAP2 Read/Write Address 34H/0DH .....	55
8.1.15 D_ch TEI Address Mask D_TAM Read/Write Address 38H/0EH .....	55
8.1.16 D_ch TEI1 Register D_TEI1 Read/Write Address 3CH/0FH .....	55
8.1.17 D_ch TEI2 Register D_TEI2 Read/Write Address 40H/10H .....	56
8.1.18 D_ch Receive Frame Byte Count High D_RBCH Read Address 44H/11H .....	56
8.1.19 D_ch Receive Frame Byte Count Low D_RBCL Read Address 48H/12H .....	56
8.1.20 Timer 2 TIMR2 Write Address 4CH/13H .....	57
8.1.21 Layer 1_Redy Code L1_RC Read/Write Address 50H/14H .....	57
8.1.22 Control Register CTL Read/Write Address 54H/15H .....	57
8.1.23 Command/Indication Receive Register CIR Read Address 58H/16H .....	58
8.1.24 Command/Indication Transmit Register CIX Read/Write Address 5CH/17H .....	59
8.1.25 S/Q Channel Receive Register SQR Read Address 60H/18H .....	59
8.1.26 S/Q Channel Transmit Register SQX Read/Write Address 64H/19H .....	60
8.1.27 Peripheral Control Register PCTL Read/Write Address 68H/1AH .....	60
8.1.28 Monitor Receive Channel 0 MOOR Read Address 6CH/1BH .....	61
8.1.29 Monitor Transmit Channel 0 MOOX Read/Write Address 70H/1CH .....	61
8.1.30 Monitor Channel 0 Interrupt Register MOOI Read_clear Address 74H/1DH .....	62
8.1.31 Monitor Channel 0 Control Register MOOC Read/Write Address 78H/1EH .....	62
8.1.32 GCI Mode Control/Status Register GCR Read/Write Address 7CH/1FH .....	62
8.1.33 Peripheral Address Register XADDR Read/Write Address F4H/3DH .....	64
8.1.34 Peripheral Data Register XDATA Read/Write Address F8H/3EH .....	65
8.1.35 Serial EEPROM Control Register EPCTL Read/Write Address FCH/3FH .....	65
8.1.36 Monitor Receive Channel 1 Register MO1R Read Address 6DH/40H .....	66
8.1.37 Monitor Transmit Channel 1 Register MO1X Read/Write Address 71H/41H .....	66
8.1.38 Monitor Channel 1 Interrupt Register MO1I Read_clear Address 75H/42H .....	66
8.1.39 Monitor Channel 1 Control Register MO1C Read/Write Address 79H/43H .....	67
8.1.40 GCI IC1 Receive Register IC1R Read Address 6EH/44H .....	67
8.1.41 GCI IC1 Transmit Register IC1X Read/Write Address 72H/45H .....	67
8.1.42 GCI IC2 Receive Register IC2R Read Address 6FH/46H .....	68
8.1.43 GCI IC2 Transmit Register IC2X Read/Write Address 73H/47H .....	68
8.1.44 GCI CI1 Indication Register CI1R Read Address 7DH/48H .....	68
8.1.45 GCI CI1 Command Register CI1X Read/Write Address 7EH/49H .....	68
8.1.46 GCI Extended Interrupt Register GCI_EXIR Read_clear Address 76H/4AH .....	69
8.1.47 GCI Extended Interrupt Mask Register GCI_EXIM Read/Write Address 7AH/4BH .....	69
8.2 B1 HDLC CONTROLLER .....	69
8.2.1 B1_ch receive FIFO B1_RFIFO Read Address 80H/20H .....	71
8.2.2 B1_ch transmit FIFO B1_XFIFO Write Address 84H/21H .....	71
8.2.3 B1_ch command register B1_CMDR Read/Write Address 88H/22H .....	71
8.2.4 B1_ch Mode Register B1_MODE Read/Write Address 8CH/23H .....	72



## W6692A PCI ISDN S/T-Controller

8.2.5 B1_ch Extended Interrupt Register B1_EXIR Read_clear Address 90H/24H.....	73
8.2.6 B1_ch Extended Interrupt Mask Register B1_EXIM Read/Write Address 94H/25H.....	74
8.2.7 B1_ch Status Register B1_STAR Read Address 98H/26H.....	74
8.2.8 B1_ch Address Mask Register 1 B1_ADM1 Read/Write Address 9CH/27H.....	75
8.2.9 B1_ch Address Mask Register 2 B1_ADM2 Read/Write Address A0H/28H.....	75
8.2.10 B1_ch Address Register 1 B1_ADR1 Read/Write Address A4H/29H.....	76
8.2.11 B1_ch Address Register 2 B1_ADR2 Read/Write Address A8H/2AH.....	76
8.2.12 B1_ch Receive Frame Byte Count Low B1_RBCL Read Address ACH/2BH.....	76
8.2.13 B1_ch Receive Frame Byte Count High B1_RBCH Read Address B0H/2CH.....	76
8.2.14 B1_ch Transmit Idle Pattern B1_IDLE Read/Write Address B4H/2DH.....	77
8.3 B2 HDLC CONTROLLER.....	77
8.4 PCI CONFIGURATION REGISTER.....	78
8.4.1 Device/Vendor ID Register Read Address 00 <sub>H</sub> .....	79
8.4.2 Status/Command Register Read/Write Address 04 <sub>H</sub> .....	80
8.4.3 Class Code/Revision ID Register Read Address 08 <sub>H</sub> .....	81
8.4.4 Header Type/Latency Timer Register Read Address 0C <sub>H</sub> .....	82
8.4.5 Base Address Register 0 Read/Write Address 10 <sub>H</sub> .....	82
8.4.6 Base Address Register 1 Read/Write Address 14 <sub>H</sub> .....	84
8.4.7 Subsystem/Subsystem Vendor ID Register Read Address 2C <sub>H</sub> .....	84
8.4.8 Interrupt Line Register Read/Write Address 3C <sub>H</sub> .....	84
8.4.9 Capability Pointer Read Address 34 <sub>H</sub> .....	85
8.4.10 Power Management Capability Read Address 40 <sub>H</sub> .....	85
8.4.11 Power Management Control/Status Read/Write Address 44 <sub>H</sub> .....	86
<b>9. ELECTRICAL CHARACTERISTICS.....</b>	<b>88</b>
9.1 ABSOLUTE MAXIMUM RATING.....	88
9.2 POWER SUPPLY.....	88
9.3 DC CHARACTERISTICS.....	88
9.4 PRELIMINARY SWITCHING CHARACTERISTICS.....	90
9.4.1 PCM Interface Timing.....	90
9.4.2 Serial EEPROM Timing.....	91
9.4.3 Peripheral Interface Timing.....	92
9.4.5 8-bit Microprocessor Timing.....	92
9.5 AC TIMING TEST CONDITIONS.....	95
<b>10. ORDERING INFORMATION.....</b>	<b>95</b>
<b>11. PACKAGE SPECIFICATIONS.....</b>	<b>96</b>

**W6692A PCI ISDN S/T-Controller****LIST OF FIGURES**

FIG.3.1 W6692A PIN CONFIGURATION - PCI MODE .....	9
FIG.3.2 W6692A PIN CONFIGURATION - INTEL BUS MODE.....	10
FIG.3.3 W6692A PIN CONFIGURATION - MOTOROLA BUS MODE .....	11
FIG.5.1 ISDN INTERNET PASSIVE S-CARD WITH TWO POTS CONNECTIONS .....	15
FIG.6.1 W6692A FUNCTIONAL BLOCK DIAGRAM.....	16
FIG.7.1 FRAME STRUCTURE AT S/T INTERFACE.....	19
FIG.7.2 W6692A WIRING CONFIGURATION IN TE APPLICATIONS.....	20
FIG.7.3 EXTERNAL TRANSMITTER CIRCUITRY.....	21
FIG.7.4 EXTERNAL RECEIVER CIRCUITRY .....	21
FIG.7.5 LAYER 1 ACTIVATION/DEACTIVATION STATE DIAGRAM - NORMAL MODE .....	26
FIG.7.6 LAYER 1 ACTIVATION/DEACTIVATION STATE DIAGRAM - SPECIAL MODE .....	27
FIG.7.7 SSP AND SCP TEST SIGNALS .....	32
FIG 7.8 GCI MODE CHANNEL STRUCTURE.....	41
FIG.7.9 SERIAL EEPROM DATA LAYOUT.....	43


**W6692A PCI ISDN S/T-Controller**
**LIST OF TABLES**

TABLE 4.1 W6692A PIN DESCRIPTIONS .....	12
TABLE 7.1 OUTPUT PHASE DELAY COMPENSATION TABLE .....	22
TABLE 7.2 LAYER 1 COMMAND CODES.....	24
TABLE 7.3 LAYER 1 INDICATION CODES.....	24
TABLE 7.4 D PRIORITY CLASSES.....	28
TABLE 7.5 D PRIORITY COMMANDS/INDICATIONS.....	28
TABLE 7.6 MULTIFRAME STRUCTURE IN S/T INTERFACE .....	31
TABLE 8.1 REGISTER ADDRESS MAP: CHIP CONTROL AND D CHANNEL HDLC.....	46
TABLE 8.2 REGISTER SUMMARY: CHIP CONTROL AND D CHANNEL HDLC .....	47
TABLE 8.3 REGISTER ADDRESS MAP: B1 CHANNEL HDLC.....	69
TABLE 8.4 REGISTER SUMMARY: B1 CHANNEL HDLC.....	70
TABLE 8.5 REGISTER ADDRESS MAP: B2 CHANNEL HDLC.....	77
TABLE 8.6 REGISTER SUMMARY: B2 CHANNEL HDLC.....	78
TABLE 8.7 PCI CONFIGURATION SPACE .....	79



## ***W6692A PCI ISDN S/T-Controller***

### **1. GENERAL DESCRIPTION**

The Winbond's single chip PCI bus ISDN S/T interface controller (W6692A) is an all-in-one device suitable for ISDN Internet access. Three HDLC controllers are incorporated in the chip, one for D channel and the other two for B channels. These HDLC controllers facilitate efficient access to signaling and data services. The built in PCI 2.2 interface circuit makes glueless design for PCI bus add-on card application. It also provides 8-bit uC interface to serve as general purposed controller for embedded applications.

### **2. FEATURES**

- \* Full duplex 2B + D S/T-interface transceiver compliant with ITU-T I.430 Recommendation, TE mode
- \* One D channel HDLC controller
  - Maskable address recognition
  - Transparent (HDLC) mode
  - FIFO buffer (2 x 128 bytes)
- \* Two B channel HDLC controllers
  - Maskable address recognition
  - Bit rate options : 56 or 64 kbps
  - Transparent (HDLC mode) or extended transparent mode (clear channel)
  - FIFO buffer (2 x 128 bytes) per B channel
  - 128K IDSL or OCN with one HDLC to bundle two B channels
- \* Two PCM codec interfaces for speech and POTS application
- \* Various B channel switching capabilities and PCM intercom
- \* GCI master/slave interface
- \* Built in PCI 2.2 slave mode circuit
- \* ACPI: PCI Power Management 1.1 compliant with elegant suspend/wakeup mechanism (*Patent Pending*)
- \* Serial EEPROM interface for PCI configuration
- \* Peripheral control pins
- \* 8-bit microprocessor interface when PCI is disabled for embedded applications
- \* Analog power down mode to 1.5mA power consumption
- \* Advanced CMOS technology
- \* 100-pin QFP and LQFP package



## W6692A PCI ISDN S/T-Controller

### 3. PIN CONFIGURATION

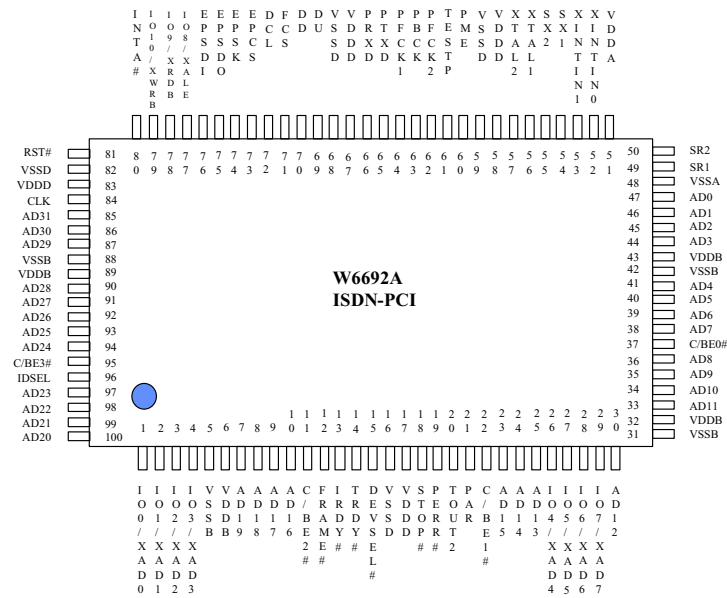
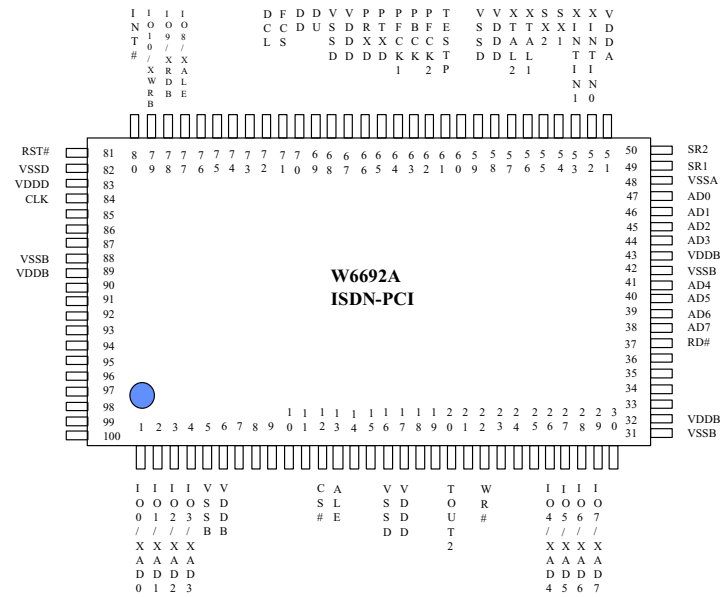


FIG.3.1 W6692A PIN CONFIGURATION - PCI MODE

**W6692A PCI ISDN S/T-Controller**



**FIG.3.2 W6692A PIN CONFIGURATION - INTEL BUS MODE**

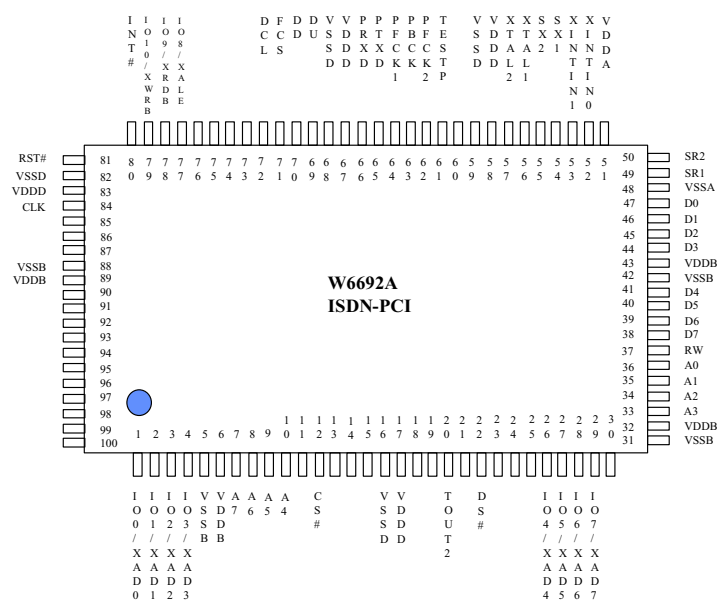
\_\_\_\_\_

\_\_\_\_\_

\_\_\_\_\_

\_\_\_\_\_

\_\_\_\_\_



### FIG.3.3 W6692A PIN CONFIGURATION - MOTOROLA BUS MODE



## W6692A PCI ISDN S/T-Controller

### 4. PIN DESCRIPTION

**TABLE 4.1 W6692A PIN DESCRIPTIONS**

**Notation :** The suffix "#" indicates an active LOW signal. In Intel or Motorola bus mode, all unspecified pins must be left unconnected.

Pin Name	Pin Number	Type	Functions
<b>PCI Mode (Enabled when CLK toggles)</b>			
CLK	84	I	<b>PCI Mode :</b> PCI Clock. All other PCI signals, except RST#, INTA# are sampled on the rising edge of CLK. According to PCI 2.1/2.2 specification, CLK is stable at least 100 $\mu$ s (Trst-clk) before deassertion of RST#. <b>Intel Bus Mode :</b> Must be pulled to HIGH. <b>Motorola Bus Mode :</b> Must be pulled to LOW.
AD31-AD0	85,86,87,90,91, 92,93,94,97,98, 99,100,7,8,9,10, 23,24,25,30,33, 34,35,36,38,39, 40,41,44,45,46, 47	I/O	Address and Data are multiplexed on the same PCI pins. During the address phase, AD31-0 contains a 32-bit physical address. During the data phase, AD7-AD0 contains the least significant byte and AD31-AD24 contain the most significant byte.
C/BE3#-C/BE0#	95,11,22,37	I	Bus command and Byte Enables. During the address phase of a transaction, they define the bus command. During data phase, they are used as Byte Enables.
PAR	21	I/O	Parity is even parity across AD31-AD0 and C/BE3#-C/BE0#.
FRAME#	12	I	FRAME# is asserted to indicate a bus transaction is beginning.
TRDY#	14	O	Target Ready indicates W6692A is able to complete the current data phase of the transaction.
IRDY#	13	I	Initiator Ready indicates the bus master's ability to complete the current data phase of the transaction.
STOP#	18	O	Stop indicates W6692A is requesting the master to stop the current transaction.
DEVSEL#	15	O	Device Select indicates W6692A has decoded itself as the target of the current access.
IDSEL	96	I	Initialization Device Select is used as chip select during configuration transactions.
PERR#	19	O	Parity Error is used for reporting of data parity errors.
RST#	81	I	PCI Reset. RST# may be asynchronous to CLK when asserted or deasserted.
INTA#	80	O	Interrupt. This is level sensitive, active LOW and open drain output.
<b>Intel Bus Mode (Enabled when CLK=HIGH)</b>			
CLK	84	I	This pin must be pulled to HIGH.
AD7-0	38,39,40,41,44,45, 46,47	I/O	Multiplexed address and data. During the address phase, AD7-0 contains a 8-bit physical address. During the data phase, AD7-AD0

**W6692A PCI ISDN S/T-Controller**

			contains data.
CS#	12	I	Chip select.
ALE	13	I	Address Latch Enable. Used to latch addresses.
RD#	37	I	Read.
WR#	22	I	Write.
RST#	81	I	Reset.
INT#	80	O	Interrupt. This is a level sensitive, active LOW and open drain output.
<b>Motorola Bus Mode (Enabled when CLK=LOW)</b>			
CLK	84	I	This pin must be pulled to LOW.
D7-D0	38,39,40,41,44,45,46,47	I/O	Data.
A7-A0	7,8,9,10,33,34,35,36	I	Address.
CS#	12	I	Chip select.
DS#	22	I	Data strobe.
RW	37	I	Read/write identify. HIGH for read, and LOW for write.
RST#	81	I	Reset.
INT#	80	O	Interrupt. This is a level sensitive, active LOW and open drain output.
<b>GCI Bus</b>			
DCL	72	I/O	GCI Bus Data Clock of the frequency: 1.536 MHz. Needs external pull-up.
FSC	71	I/O	GCI Bus Frame Synchronization Clock: 8KHz. Needs external pull-up.
DD	70	I/O	GCI Bus Data Downstream : Slave mode - input, master mode - output. Needs external pull-up.
DU	69	I/O	GCI Bus Data Upstream : Slave mode - output, master mode - input. Needs external pull-up.
<b>PCM Interface</b>			
PFCK1	64	O	PCM port 1 frame synchronization signal, with 8 KHz repetition rate and 8 bit pulse width.
PFCK2	62	O	PCM port 2 frame synchronization signal, with 8 KHz repetition rate and 8 bit pulse width.
PBCK	63	O	PCM bit synchronization clock of 1.536 MHz.
PTXD	65	O	PCM transmit data output. A maximum of two channels with 64 Kbit/s data rate can be multiplexed on this signal.
PRXD	66	I	PCM receive data input. A maximum of two channels with 64 Kbit/s data rate can be multiplexed on this signal. Needs external pull-up.
<b>ISDN Signals and External Crystal</b>			
SR1	49	I	S/T bus receiver input (negative).
SR2	50	I	S/T bus receiver input (positive).
SX1	54	O	S/T bus transmitter output (positive).
SX2	55	O	S/T bus transmitter output (negative).
XTAL1	56	I	Crystal or Oscillator clock input. The clock frequency: 7.68MHz±100PPM.
XTAL2	57	O	Crystal clock output. Left unconnected when using oscillator.
<b>External EEPROM Interface</b>			
EPCS	73	O	Serial EEPROM chip select (active HIGH).
EPSK	74	O	Serial EEPROM data clock (clock frequency < 250 KHz).
EPSDI	76	I	Serial EEPROM data input.
EPSDO	75	O	Serial EEPROM data output.
<b>Functional Test</b>			

**W6692A PCI ISDN S/T-Controller**

TESTP	61	I	Used to enable normal operation (1) or enter test mode (0).
<b>PCI Power Management</b>			
PME	60	O	Power Management Event Signal. Level triggered, active HIGH. Drive a transistor to PME# in PCI slot.
<b>Peripheral Control</b>			
TOUT2	20	O	Timer 2 output. A square wave with 50 % duty cycle, 1~63 ms period can be generated.
XINTIN0	52	I	A level change (either direction) will generate a maskable interrupt on the PCI bus interrupt request pin INTA#.
XINTIN1	53	I	A level change (either direction) will generate a maskable interrupt on the PCI bus interrupt request pin INTA#.
IO10-IO0	79,78,77,29,28, 27,26,4,3,2,1	I/O	When configured as simple IO mode (PCTL:XMODE = 0), these pins can read/write data from/to peripheral components. The pin directions are selected via register. After hardware reset, the output drivers are disabled.
XAD7-XAD0	29,28,27,26, 4,3,2,1	I/O	When configured as microprocessor mode (PCTL:XMODE = 1), address and data are multiplexed on these pins.
XALE	77	O	When configured as microprocessor mode (PCTL:XMODE = 1), this is the Address Latch Enable output.
XRDB	78	O	When configured as microprocessor mode (PCTL:XMODE = 1), this is the read pulse.
XWRB	79	O	When configured as microprocessor mode (PCTL:XMODE = 1), this is the write pulse.
<b>Power and Ground</b>			
VDDD	17,58,67,83	I	Digital Power Supply (5V±5%).
VDDA	51	I	Analog Power Supply (5V±5%).
VDDDB	6,32,43,89	I	PCI Bus Power Supply (5V±5%).
VSSD	16,59,68,82	I	Digital Ground.
VSSA	48	I	Analog Ground.
VSSB	5,31,42,88	I	PCI Bus Ground.

**W6692A PCI ISDN S/T-Controller**
**5. SYSTEM DIAGRAM AND APPLICATIONS**

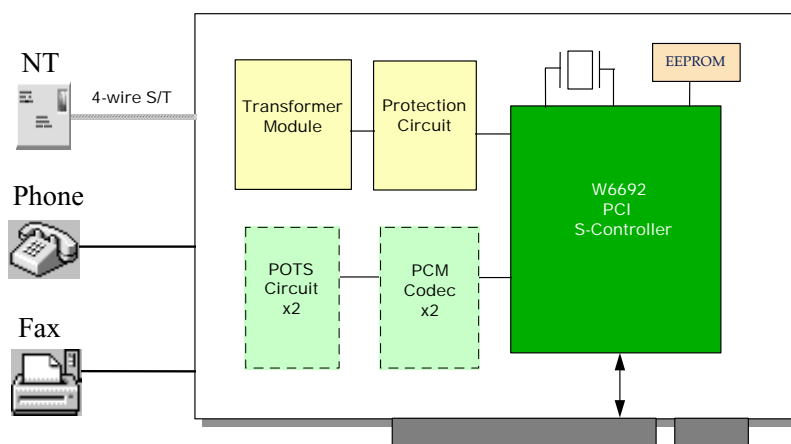
Typical applications include :

- PCI passive S-card for data only service
- PCI passive S-card with one handset/POTS connection
- PCI passive S-card with two POTS connections
- ISDN TA, Router or other embedded application

The all-in-one characteristic of W6692A makes it excellent for passive ISDN PCI card. W6692A integrates three HDLC controllers in the chip and interfaces to PCI bus directly. In addition, W6692A provides peripheral control circuits for PCM CODEC and POTS interface.

In the following application, only a few TTL-like glue circuits are needed for the two POTS interface control.

W6692A also integrates the 8-bit Intel or Motorola microprocessor interface which makes it excellent for embedded application.

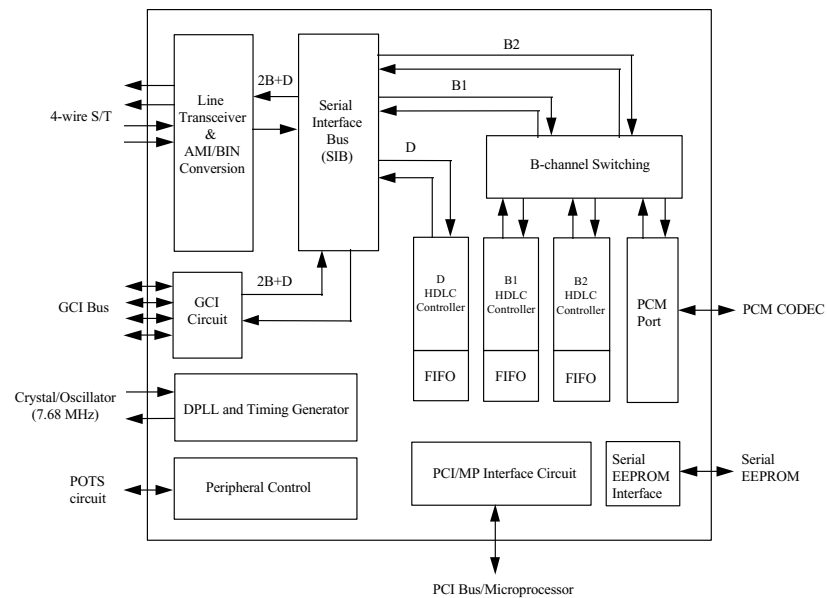


**FIG.5.1 ISDN INTERNET PASSIVE S-CARD WITH TWO POTS CONNECTIONS**

**W6692A PCI ISDN S/T-Controller**

**6. BLOCK DIAGRAM**

The block diagram of W6692A is shown in Figure 6.1



**FIG.6.1 W6692A FUNCTIONAL BLOCK DIAGRAM**





## *W6692A PCI ISDN S/T-Controller*

### 7. FUNCTIONAL DESCRIPTIONS

#### 7.1 Main Block Functions

The functional block diagram of W6692A is shown in Fig.6.1. The main function blocks are :

- Layer 1 function according to ITU-T I.430
- Serial Interface Bus (SIB)
- B channel switching
- GCI bus interface
- PCM port (x 2) and internal B channel switching
- D channel HDLC controller
- B channel HDLC controllers (x 2)
- PCI/microprocessor interface circuit
- Serial EEPROM interface for PCI Configuration purpose
- Peripheral control

The layer 1 function includes:

- S/T bus transmitter/receiver
- Timing recovery using Digital Phase Locked Loop (DPLL) circuit
- Layer 1 activation/deactivation, TE mode
- D channel access control
- Frame alignment
- Multi-frame synchronization
- Test functions

The serial interface bus performs the multiplexing/demultiplexing of D and 2B channels.

The B channel switching determines the connection between layer 1/GCI, layer 2 and PCM.

The GCI circuit is used to connect a U transceiver (slave mode) or other slave GCI device (master mode).

The PCM port provides two 64 kbps clear channels to connect to PCM codec chips.

The D channel HDLC controller performs the LAPD (Link Access Procedure on the D channel) protocol according to ITU-T I.441/Q.921 recommendation.

There are two independent B channel HDLC controllers. They can be used to support HDLC-like protocols such as Internet PPP. Two S/T B channels can also be programmed to 128Kbps mode with one HDLC controller to support IDSL or OCN (in Japan) application.

The PCI interface circuit implements PCI specification revision 2.2 target mode function. In embedded application, a 8-bit microprocessor interface is used to control the chip.



## ***W6692A PCI ISDN S/T-Controller***

The peripheral control block is used to control other peripheral devices such as CODEC, SLIC, DTMF detector, LEDs.

### **7.2 Layer 1 Functions Descriptions**

The layer 1 functions includes :

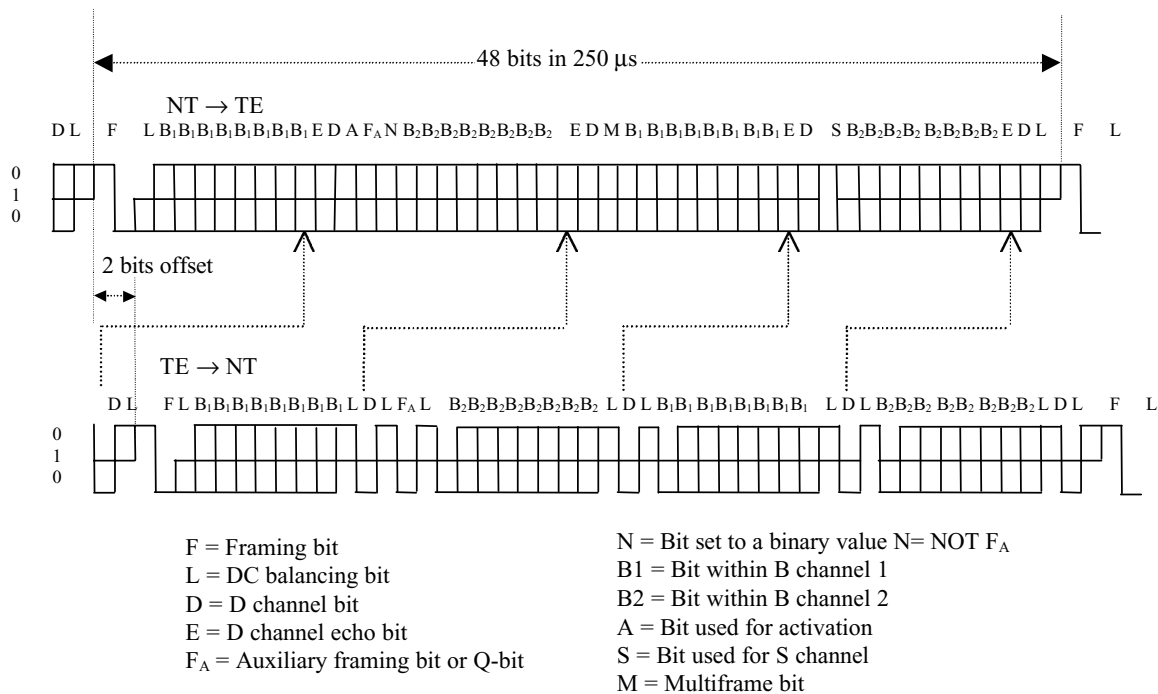
- Transmitter/Receiver which conform to the electrical specifications of ITU-T I.430
- Receiver clock recovery and timing generation
- Output phase delay (deviation) compensation
- Layer 1 activation/deactivation procedures
- D channel access control
- Frame alignment
- Multi-frame synchronization
- Test functions

#### **7.2.1 S/T Interface Transmitter/Receiver**

According to ITU-T I.430, pseudo-ternary code with 100% pulse width is used in both directions of transmission on the S/T interface. The binary "1" is represented by no line signal (zero volt), whereas a binary "0" is represented by a positive or negative pulse.

Data transmissions on the S/T interface are arranged as frame structures. The frame is 250  $\mu$ s long and consists of 48 bits, which corresponds to a 192 kbit/s line rate. Each frame carries two octets of B1 channel, two octets of B2 channel and four D channel bits. Therefore, the 2B+D data rate is 144 kbit/s. The frame structure is shown in Fig.7.1.

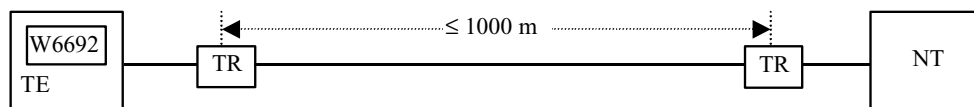
The frame begin is marked by a framing bit, which is followed by a DC balancing bit. The first binary "0" following the framing bit balancing bit is of the same polarity as the framing bit balancing bit, and subsequent binary zeros must alternate in polarity.

**W6692A PCI ISDN S/T-Controller**

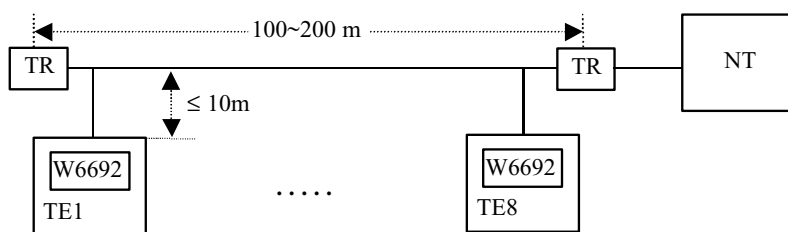
**FIG.7.1 FRAME STRUCTURE AT S/T INTERFACE**

There are three wiring configurations according to I.430 : point-to-point, short passive bus and extended passive bus. They are shown in Fig.7.2.

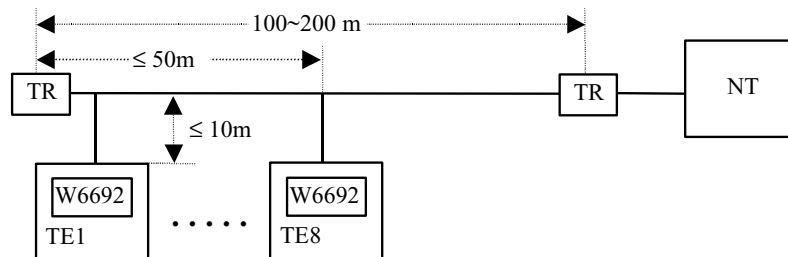
**W6692A PCI ISDN S/T-Controller**



(a) Point-to-point configuration



(b) Short passive bus configuration



(c) Extended passive bus configuration

TR : Terminating Resistor

**FIG.7.2 W6692A WIRING CONFIGURATION IN TE APPLICATIONS**



### W6692A PCI ISDN S/T-Controller

The transmitter and receiver are implemented by differential circuits to increase signal to noise ratio (SNR). The nominal differential line pulse amplitude at 100  $\Omega$  termination is 750 mV, zero to peak. Transformers with 2:1 turn ration are needed at transmitter and receiver for voltage level translation and DC isolation.

To meet the electrical characteristic requirements in I.430, some additional circuits are needed. At the transmitter side, the external resistors (18 to 33  $\Omega$ ) are used to adjust the output pulse amplitude and to meet the transmitter active impedance ( $\geq 20 \Omega$ ) when transmitting binary zeros. At the receiver side, the 1.8 k $\Omega$  resistors protect the device inputs, while the 10 k $\Omega$  resistors (1.8 k $\Omega$  + 8.2 k $\Omega$ ) limit the peak current in impedance tests. The diode bridge is used for overvoltage protection.

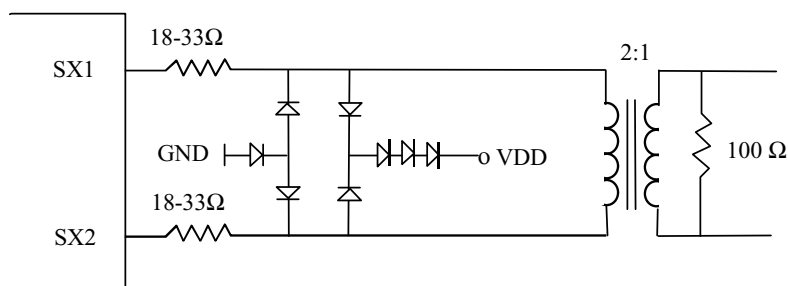


FIG.7.3 EXTERNAL TRANSMITTER CIRCUITRY

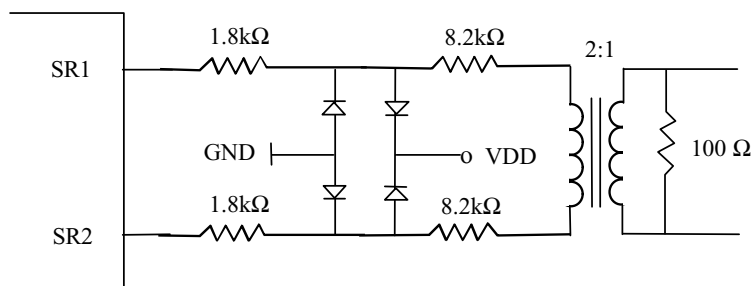


FIG.7.4 EXTERNAL RECEIVER CIRCUITRY



## W6692A PCI ISDN S/T-Controller

After hardware reset, the receiver may enter power down state in order to save power consumption. In this state, the internal clocks are turned off, but the analog level detector is still active to detect signal coming from the S interface. The power down state is left either by non-INFO 0 signal from S interface or C/I command from microprocessor.

### 7.2.2 Receiver Clock Recovery And Timing Generation

A Digital Phase Locked Loop (DPLL) circuit is used to derive the receive clock from the received data stream. This DPLL uses a 7.68 MHz clock as reference. According to I.430, the transmit clock is normally delayed by 2 bit time from the receive clock. The "total phase deviation from input to output" is -7% to +15% of a bit period. In some cases, delay compensation may be needed to meet this requirement (see OPS1-0 bits in D\_CTL register).

**TABLE 7.1 OUTPUT PHASE DELAY COMPENSATION TABLE**

OPS1	OPS0	Effect
0	0	No phase delay compensation
0	1	Phase delay compensation 260 ns
1	0	Phase delay compensation 520 ns
1	1	Phase delay compensation 1040 ns

W6692A does not need RC filter on receiver side, therefore zero delay compensation is selected normally. This is also the default setting.

The PCM output clocks (PFCK1-2, PBCK) are locked to the S-interface timing with jitter. See the electrical specification.

### 7.2.3 Layer 1 Activation/Deactivation

The layer 1 activation/deactivation procedures are implemented by a finite state machine according to TE mode. The state transitions are triggered by signals received at S interface or commands issued from microprocessor. The state outputs signals to S interface and indication to microprocessor. The CIX register is used by microprocessor to issue command, and the CIR register is used by microprocessor to receive indication.

Some commands are used for special purposes. They are "layer 1 reset", "analog loopback", "send continuous zeros" and "send single zero".

#### 7.2.3.1 States Descriptions And Command/Indication Codes

##### **F3 Deactivated without clock**

This is the "deactivated" state of ITU-T I.430. The receive line awake unit is active except during a hardware reset pulse. After reset, once the indication "1111" has been read out, internal clocks will turn off and stay at this state if INFO 0 is received on the S line. The turn off time is approximate 93 ms. The ECK command must be issued to activate the clocks.

##### **F3 Deactivated with clock**



## ***W6692A PCI ISDN S/T-Controller***

This state is identical to "F3 Deactivated without clock" except the internal clocks are enabled. The state is entered by the ECK command. The clocks are enabled approximately 0.5 ms to 4 ms after the ECK command, depending on the crystal capacitances. (It is about 0.5 ms for 12pF to 33pF capacitance).

### **F3 Awaiting Deactivation**

The W6692A enters this state after receiving INFO 0 (in states F5 to F8) for 16ms (64 frames). This time constant prevents spurious effect on S interface. Any non-INFO 0 signal on the S interface causes transition to "F5 Identifying Input" state. If this transition does not occur in a specific time (500 - 1000 ms), the microprocessor may issue DRC or ECK command to deactivate layer 1.

### **F4 Awaiting Signal**

This state is reached when an activate request command has been received. In this state, the layer 1 transmits INFO1 and INFO 0 is received from the S interface. The software starts timer T3 of L430 when issuing activate request command. The software deactivates layer 1 if no signal other than INFO 0 has been received on S interface before expiration of T3.

### **F5 Identifying Input**

After the receipt of any non-INFO 0 signal from NT, the W6692A ceases to transmit INFO 1 and awaits identification of INFO 2 or INFO 4. This state is reached at most 50  $\mu$ s after a signal different from INFO 0 is present at the receiver of the S interface.

### **F6 Synchronized**

When W6692A receives an activation signal (INFO 2), it responds with INFO 3 and waits for normal frames (INFO 4). This state is reached at most 6 ms after an INFO 2 arrives at the S interface (in case the clocks were disabled in "F3 Deactivated without clock").

### **F7 Activated**

This is the normal active state with the layer 1 protocol activated in both directions. From state "F6 Synchronized", state F7 is reached at most 0.5 ms after reception of INFO 4. From state "F3 Deactivated without clock" with the clocks disabled, state F7 is reached at most 6 ms after the W6692A is directly activated by INFO 4.

### **F8 Lost Framing**

This is the state where the W6692A has lost frame synchronization and is awaiting resynchronization by INFO 2 or INFO 4 or deactivation by INFO 0.

### **Special States:**

#### **Analog Loop Initiated**

On Enable Analog Loop command, INFO 3 is sent by the line transmitter internally to the line receiver (INFO 0 is sent to the line). The receiver is not yet synchronized.

#### **Analog Loop Activated**

The receiver is synchronized on INFO 3 which is looped back internally from the transmitter. The indication "TI" or "ATI" is sent depending on whether or not a signal different from INFO 0 is detected on the S interface.

### **Send Continuous Pulses**



## W6692A PCI ISDN S/T-Controller

A 96 kHz continuous pulse with alternating polarities is sent.

### Send Single Pulses

A 2 KHz , isolated pulse with alternating polarities is sent.

### Layer 1 Reset

A layer 1 reset command forces the transmission of INFO 0 and disables the S line awake detector. Thus activation from NT is not possible. There is no indication in reset state. The reset state can be left only with ECK command.

**TABLE 7.2 LAYER 1 COMMAND CODES**

Command	Symbol	Code	Description
Enable clock	ECK	0000	Enable internal clocks
Layer 1 reset	RST	0001	Layer 1 reset
Send continuous pulses	SCP	0100	Send continuous pulses at 96 kHz
Send single pulses	SSP	0010	Send isolated pulses at 2 kHz
Activate request at priority 8	AR8	1000	Activate layer 1 and set D channel priority level to 8
Activate request at priority 10	AR10	1001	Activate layer 1 and set D channel priority to 10
Enable analog loopback	EAL	1010	Enable analog loopback
Deactivate layer 1	DRC	1111	Deactivate layer 1 and disable internal clocks

**TABLE 7.3 LAYER 1 INDICATION CODES**

Indication	Symbol	Code	Descriptions
Clock Enabled	CE	0111	Internal clocks are enabled
Deactivate request downstream	DRD	0000	Deactivation request by S interface, i.e INFO 0 received
Level detected	LD	0100	Signal received, receiver not synchronous
Activate request downstream	ARD	1000	INFO 2 received
Test indication	TI	1010	Analog loopback activated or continuous zeros or single zeros transmitted
Awake test indication	ATI	1011	Level detected during test function
Activate indication with priority class 1	AI8	1100	INFO 4 received, D channel priority is 8 or 9
Activate indication with priority class 2	AI10	1101	INFO 4 received, D channel priority is 10 or 11
Clock disabled	CD	1111	Layer 1 deactivated, internal clocks are disabled

### 7.2.3.2 State Transition Diagrams

The followings are the state transition diagrams, which implement the activation/deactivation state matrix in I.430 (TABLE 5/I.430). The "command" and "s receive" entries in each state octagon keep the state, the "indication" and "s transmit" entries in each state octagon are the state outputs. For example, at "F3 Deactivated with clock" state, the layer 1 will stay at this state if the command is "ECK" and the INFO 0 is received on S interface. At this state, it provides "CE" indication to the microprocessor and transmits INFO 0 on S interface. The "AR8/10" command causes transition to F4 and non-INFO 0 signal causes transition to

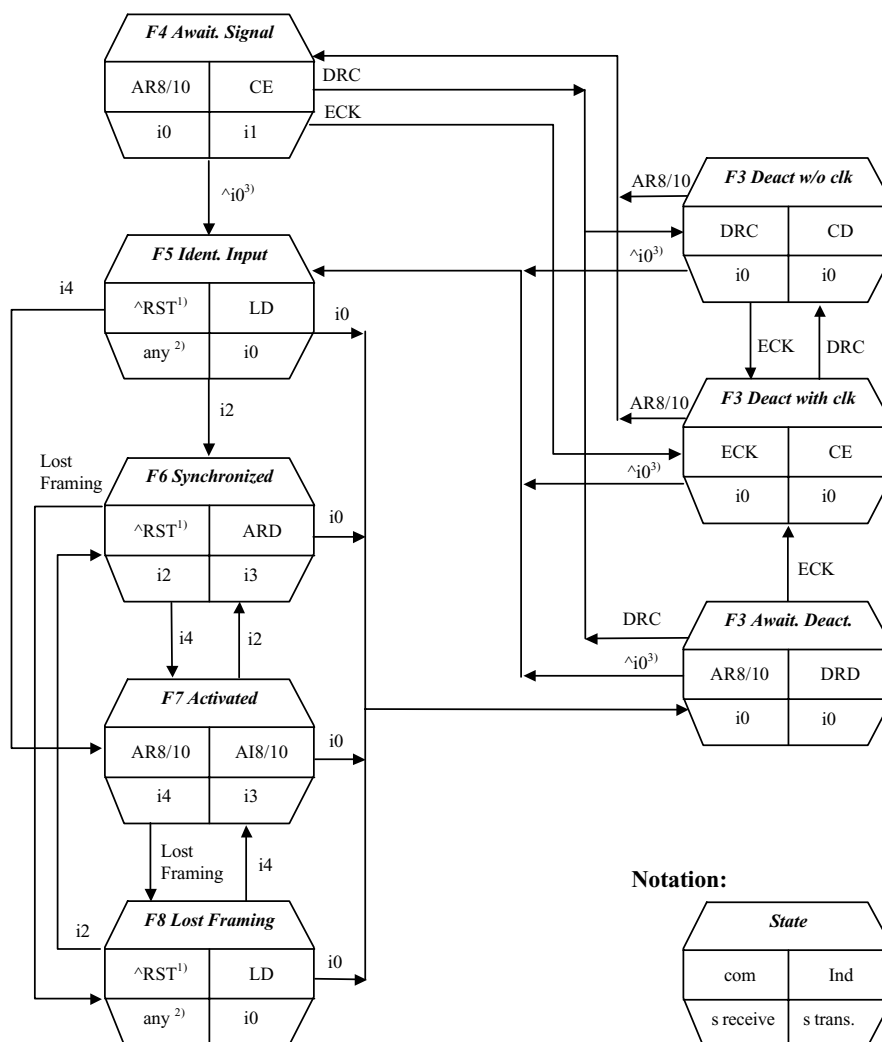




***W6692A PCI ISDN S/T-Controller***

F5. Note that the command code writtern by the microprocessor in CIX register and indication code written by layer 1 in CIR register are transmitted repeatedly until a new code is written.

W6692A PCI ISDN S/T-Controller

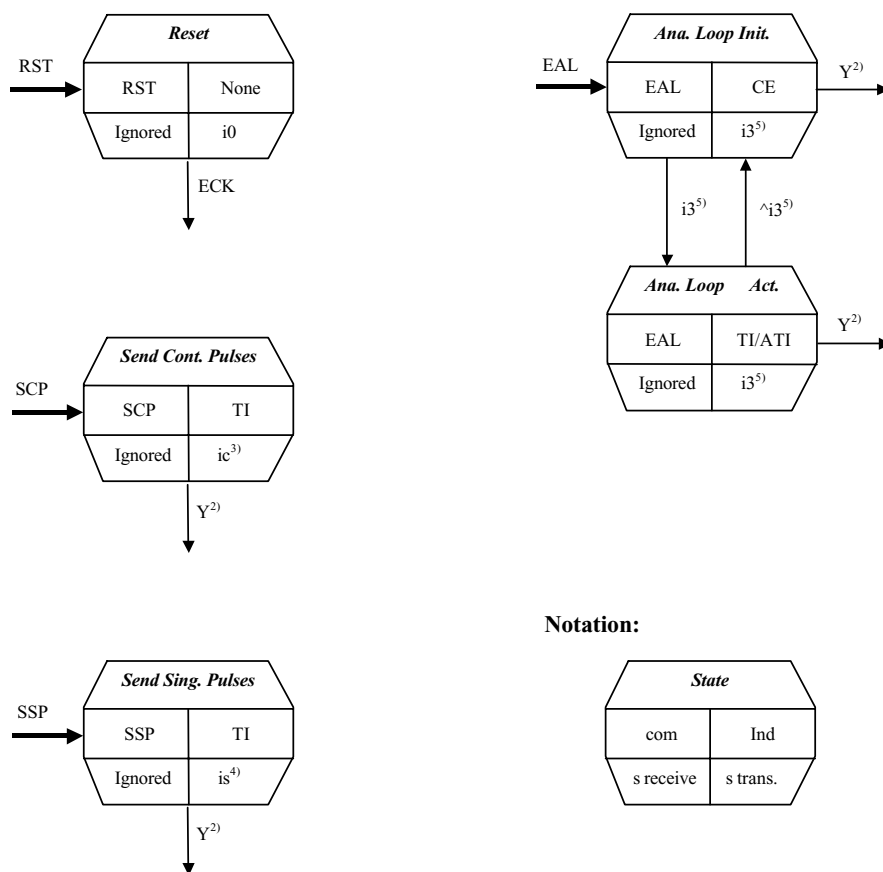


**Note:**

1. "^RST" means "NOT layer 1 reset command".
2. "Any" means any signal other than i0, which has not yet been determined.
3. "^i0" means any signal other than i0.

FIG.7.5 LAYER 1 ACTIVATION/DEACTIVATION STATE DIAGRAM - NORMAL MODE

**W6692A PCI ISDN S/T-Controller**



**Note :**

1. RST can be issued at any state, while SCP, SCZ and EAL can be issued only at F3 or F7.
2. Y is one of the commands : ECK, DRC, RST.
3. Continuous pulses at 96 kHz.
4. Isolated pulses at 2 kHz.
5. The INFO 3 is transmitted internally only.

**FIG.7.6 LAYER 1 ACTIVATION/DEACTIVATION STATE DIAGRAM - SPECIAL MODE**



## W6692A PCI ISDN S/T-Controller

### 7.2.4 D Channel Access Control

The D channel access control includes collision detection and priority management. The collision detection is always enabled. The priority management procedure as specified in ITU-T I.430 is fully implemented in W6692A.

A collision is detected if the transmitted D bit and the received echo bit do not match. When this occurs, D channel transmission is immediately stopped, and the echo channel is monitored to attempt the next D channel access.

There are two priority classes: class 1 and class 2. Within each class, there are normal and lower priority levels.

**TABLE 7.4 D PRIORITY CLASSES**

	Normal level	Lower level
Priority class 1	8	9
Priority class 2	10	11

The selection of priority class is via the AR8/AR10 command. The following table summarizes the commands/indications used for setting the priority classes:

**TABLE 7.5 D PRIORITY COMMANDS/INDICATIONS**

Command	Symbol	Code	Remarks
Activate request, set priority 8	AR8	1000	Activation command, set D channel priority to 8
Activate request, set priority 10	AR10	1001	Activation command, set D channel priority to 10
Indication	Abbr.		Remarks
Activate indication with priority 8	AI8	1100	Info 4 received, D channel priority is 8 or 9
Activate indication with priority 10	AI10	1101	Info 4 received, D channel priority is 10 or 11

### 7.2.5 Frame Alignment

The following sections describe the behavior of W6692A in respect to the CTS-2 conformance test procedures for frame alignment. Please refer to ETSI-TM3 Appendix B1 for detailed descriptions.



## W6692A PCI ISDN S/T-Controller

### 7.2.5.1 FAinfA\_1fr

This test checks if TE does not lose frame alignment on receipt of one bad frame. The pattern for the bad frame is defined as IX\_96 kHz. This pattern consists of alternating pulses at 96 kHz during the whole frame.

Device	Settings	Result
W6692A	None	Pass

### 7.2.5.2 FAinfB\_1fr

This test checks if TE does not lose frame alignment on receipt of one IX\_I4noflag frame which has no framing and balancing bit.

Device	Settings	Result
W6692A	None	Pass

### 7.2.5.3 FAinfD\_1fr

This test checks if TE does not lose frame alignment on receipt of one IX-I4viol16 frame. The IX\_I4viol16 frame remains at binary "1" until the first B2 bit which is bit position 16. The pulse sequences are: Framing bit, balancing bit, B2 bit, M bit, S bit, balancing bit. The TE should reflect the received  $F_A$  bit ( $F_A="1"$ ) in the transmitted frame.

Device	Settings	Result
W6692A	None	Pass

### 7.2.5.4 FAinfA\_kfr

This is to test the number k of IX\_96 kHz frames necessary for loss of frame alignment.

Device	Settings	Result
W6692A	k =2	Pass

### 7.2.5.5 FAinfB\_kfr

This is to test the number k of IX\_I4noflag frames necessary for loss of frame alignment.



## W6692A PCI ISDN S/T-Controller

Device	Settings	Result
W6692A	k = 2	Pass

### 7.2.5.6 *F<sub>A</sub>infD<sub>\_kfr</sub>*

This is to test the number k of IX\_I4noflag frames necessary for loss of frame alignment.

Device	Settings	Result
W6692A	k = 2	Pass

### 7.2.5.7 *Faregain*

This is to test the number m of good frames necessary for regain of frame alignment. The TE regains frame alignment at m+1 frame.

The W6692A achieves synchronization after 5 frames, i.e m=4.

Device	Settings	Result
W6692A	m = 4	Pass

## 7.2.6 Multiframe Synchronization

As specified by ITU-T I.430, the Q bit is transmitted from TE to NT in the position normally occupied by the auxiliary framing bit ( $F_A$ ) in one frame out of 5, whereas the S bit is transmitted from NT to TE. The S and Q bit positions and multiframe structure are shown in Table 7.6.

The functions provided by W6692A are:

- Multiframe synchronization: Synchronization is achieved when the M bit pattern has been correctly received during 20 consecutive frames starting from frame number 1.  
Note: Criterion for multiframe synchronization is not defined in I.430 Recommendation.
- S bits receive and detect: When synchronization is achieved, the four received S bits in frames 1,6,11,16 are stored as S1 to S4 in the SQR register respectively. A change in the received four bits (S1-4) is indicated by an interrupt.
- Multiframe synchronization monitoring: Multiframe synchronization is constantly monitored. The synchronization state is indicated by the MSYN bit in the SQR register.
- Q bits transmit and  $F_A$  mirroring: When multiframe synchronization is achieved, the four bits Q1-4 stored in the SQXR register are transmitted as the four Q bits ( $F_A$ -bit position) in frames 1,6,11 and 16. Otherwise the  $F_A$  bit transmitted is a mirror of the received  $F_A$ -bit. At loss of synchronization, the mirroring is resumed at the next  $F_A$ -bit.
- The multiframe synchronization can be disabled by setting MFD bit in the D\_MODE register.



### ***W6692A PCI ISDN S/T-Controller***

- According to I.430 Recommendation, the S/Q channel can be used as operation and maintenance signalling channel. At transmitter, a S/Q code for a message shall be repeated at least six times or as many as necessary to obtain the desired response. At receiver, a message shall be considered received only when the proper codes is received three consecutive times.

**TABLE 7.6 Multiframe structure in S/T interface**

Frame Number	NT-to-TE F <sub>A</sub> -bit position	NT-to-TE M bit	NT-to-TE S bit	TE-to-NT F <sub>A</sub> -bit position
1	ONE	ONE	S1	Q1
2	ZERO	ZERO	ZERO	ZERO
3	ZERO	ZERO	ZERO	ZERO
4	ZERO	ZERO	ZERO	ZERO
5	ZERO	ZERO	ZERO	ZERO
6	ONE	ZERO	S2	Q2
7	ZERO	ZERO	ZERO	ZERO
8	ZERO	ZERO	ZERO	ZERO
9	ZERO	ZERO	ZERO	ZERO
10	ZERO	ZERO	ZERO	ZERO
11	ONE	ZERO	S3	Q3
12	ZERO	ZERO	ZERO	ZERO
13	ZERO	ZERO	ZERO	ZERO
14	ZERO	ZERO	ZERO	ZERO
15	ZERO	ZERO	ZERO	ZERO
16	ONE	ZERO	S4	Q4
17	ZERO	ZERO	ZERO	ZERO
18	ZERO	ZERO	ZERO	ZERO
19	ZERO	ZERO	ZERO	ZERO
20	ZERO	ZERO	ZERO	ZERO
1	ONE	ONE	S1	Q1
2	ZERO	ZERO	ZERO	ZERO
etc.				

### **7.2.7 Test Functions**

The W6692A provides loop and test functions as follows:

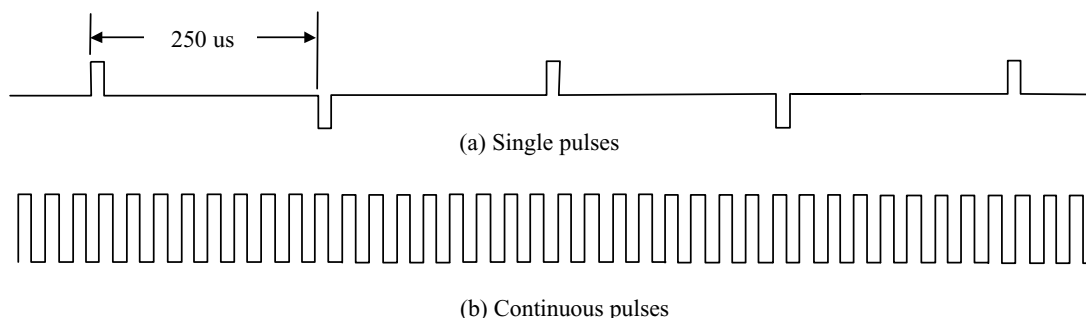


### W6692A PCI ISDN S/T-Controller

- Digital loop via DLP bit in D\_MODE register: In the layer 2 block, the transmitted 2B+D data are internally looped (from HDLC transmitter to HDLC receiver), and in the PCM ports, the transmitted B channels are internally looped (from PCM inputs to PCM outputs). The clock timings are generated internally and are independent of the S bus timing. This loop function is used for test of PCM and higher layer functions, excluding layer 1. After hardware reset, W6692A will power down if S bus is not connected or if there is no signal on the S bus. In this case, the C/I command ECK must be issued to power up the chip.
- Analog loop via the C/I command EAL: The analog S interface transmitter is internally connected to the S interface receiver. When the receiver has synchronized itself to the internal INFO 3 signal, the message "Test Indication" or "Awake Test Indication" is delivered to the CIR register. No signal is transmitted over the S interface.

In this mode, the S interface awake detector is enabled. Therefore if a level (INFO 2/ INFO 4) is detected on the S interface, this will be reported by the "Awake Test Indication (ATI)" indication.

- Remote loopback via RLP bit in D\_MODE register: The digital 2B data received from the S interface receiver is loopbacked to the S interface transmitter. The D channel is not looped. When RLP is enabled, layer 1 D channel is connected to HDLC port and DLP cannot be enabled.
- Transmission of special test signals via layer 1 command:
  - \* Send Single Pulses (SSP): To send isolated single pulses of alternating polarity, with pulse width of one bit time, 250 us apart, with a repetition frequency of 2 kHz.
  - \* Send Continuous Pulses (SCP): To send continuous pulses of alternating polarity, with pulse width of bit time. The repetition frequency is 96 kHz.



**FIG.7.7 SSP AND SCP TEST SIGNALS**





## W6692A PCI ISDN S/T-Controller

### 7.3 Serial Interface Bus

The 192 kbps S/T interface signal consists of two B channels (64 kbps each), one D channel (16 kbps) and other control signals. The multiplexing/demultiplexing functions are carried out in the Serial Interface Bus (SIB) block. In addition, the B1 and B2 channels can be individually set to carry 64 kbps or 56 kbps traffic.

### 7.4 B Channel Switching

There are three switching terminals in W6692A: layer 1, layer 2, CODEC interface. Layer 1 can be S/T or U. CODEC interface can be PCM port or GCI bus. They are set in in GCR register.

GMODE	GACT	Layer 1	CODEC Interface	GCI Mode
0	0	internal S/T	PCM Port	Master
0	1	internal S/T	GCI Bus	Master
1	x	external U transceiver	PCM Port	Slave

The B1 and B2 channel switchings are programmed independently. The switching matrix is controlled by PXC bit in PCTL register and B1\_SW[1:0], B2\_SW[1:0] bits in B1\_MODE and B2\_MODE registers as follows :

PCM1/GCI\_B1 Receive Table

PXC	B1_SW[1:0]	B2_SW[1:0]	PCM1/GCI_B1 Rx
0	00	xx	L1_B1
0	01	xx	L1_B1
0	10	xx	L2_B1
0	11	xx	PCM1/GCI_B1
1	xx	00	L1_B2
1	xx	01	L1_B2
1	xx	10	L2_B2
1	xx	11	PCM2/GCI_B2

PCM2/GCI\_B2 Receive Table

PXC	B1_SW[1:0]	B2_SW[1:0]	PCM2/GCI_B2 Rx
0	xx	00	L1_B2
0	xx	01	L1_B2
0	xx	10	L2_B2
0	xx	11	PCM2/GCI_B2
1	00	xx	L1_B1
1	01	xx	L1_B1
1	10	xx	L2_B1
1	11	xx	PCM1/GCI_B1

**W6692A PCI ISDN S/T-Controller**

Layer2-B1 Receive Table

PXC	B1_SW[1:0]	B2_SW[1:0]	L2_B1 Rx
x	00	xx	L1_B1
x	01	xx	L1_B1
0	10	xx	PCM1/GCI_B1
1	10	xx	PCM2/GCI_B2
x	11	xx	L1_B1

Layer2-B2 Receive Table

PXC	B1_SW[1:0]	B2_SW[1:0]	L2_B2 Rx
x	xx	00	L1_B2
x	xx	01	L1_B2
0	xx	10	PCM2/GCI_B2
1	xx	10	PCM1/GCI_B1
x	xx	11	L1_B2

Layer1-B1 Receive Table

PXC	B1_SW[1:0]	B2_SW[1:0]	L1_B1 Rx
x	00	xx	L2_B1
0	01	xx	PCM1/GCI_B1
1	01	xx	PCM2/GCI_B2
x	10	xx	High
x	11	xx	L2_B1

Layer1-B2 Receive Table

PXC	B1_SW[1:0]	B2_SW[1:0]	L1_B2 Rx
x	xx	00	L2_B2
0	xx	01	PCM2/GCI_B2
1	xx	01	PCM1/GCI_B1
x	xx	10	High
x	xx	11	L2_B2

For examples, if switching connection of Layer1-B1 and PCM2, Layer1-B2 and PCM1 are considered, then look up the destination as PCM2 from PCM2/GCI\_B2 Receive Table. To achieve above switching function, chose Layer1-B2 as source, set PXC bit to 1 and set 00 or 01 to B1\_SW[1:0]. It is the same procedure for Layer1-B2/PCM1 by searching PCI/GCI\_B1 Receive table, setting PXC bit to 1 and seting 00 or 01 to B2\_SW[1:0]. There are many switching combinations, and varieties of switching functions are easily programmed.

**W6692A PCI ISDN S/T-Controller****7.5 PCM Port**

There are two PCM ports in W6692A. Data is valid when respective PFCK is HIGH. The frame synchronization clocks (PFCK1-2) are 8 kHz and the bit synchronization clock (PBCK) is 1.536 MHz.

**7.6 D Channel HDLC Controller**

There are two HDLC protocols that are used for ISDN layer 2 functions : LAPD and LAPB. Their frame formats are shown below.

**LAPB modulo 8 :**

flag (1 octet)	address (1 octet)	control (1 octet)	information (0 or N octets)	FCS (2 octets)	flag (1 octet)
-------------------	----------------------	----------------------	--------------------------------	-------------------	-------------------

Control field bits	7	6	5	4	3	2	1	0
I frame	N(R)			P	N(S)			0
S frame	N(R)			P/F	S	S	0	1
U frame	M	M	M	P/F	M	M	1	1

**LAPB modulo 128 :**

flag (1 octet)	address (1 octet)	control (1 or 2 octets)	information (0 or N octets)	FCS (2 octets)	flag (1 octet)
-------------------	----------------------	----------------------------	--------------------------------	-------------------	-------------------

	1st octet								2nd octet									
Control field bits	7	6	5	4	3	2	1	0	7	6	5	4	3	2	1	0		
I frame	N(S)								0	N(R)								P
S frame	X	X	X	X	S	S	0	1	N(R)								P/F	
U frame	M	M	M	P/F	M	M	1	1										

**LAPD : modulo 128 only**

flag (1 octet)	address (2 octets)	control (2 octets)	information (0 or N octets)	FCS (2 octets)	flag (1 octet)
-------------------	-----------------------	-----------------------	--------------------------------	-------------------	-------------------

	1st octet								2nd octet									
Control field bits	7	6	5	4	3	2	1	0	7	6	5	4	3	2	1	0		
I frame	N(S)								0	N(R)								P/F
S frame	0	0	0	0	S	S	0	1	N(R)								P/F	
U frame	M	M	M	P/F	M	M	1	1										



## W6692A PCI ISDN S/T-Controller

### 7.6.1 D Channel Message Transfer Modes

The D channel HDLC controller operates in transparent mode.

Characteristics:

- Receive frame address recognition
- Address comparison maskable bit-by-bit
- Flag generation / deletion
- Zero bit insertion/ deletion
- Frame Check Sequence (FCS) generation/ check with CRC\_ITU-T

**Note.** The LAPD protocol uses the CRC\_ITU-T for Frame Check Sequence. The polynomial is  $X^{16} + X^{12} + X^5 + 1$ .

For address recognition, the W6692A provides four programmable registers for individual SAPI and TEI values, SAP1-2 and TEI1-2, plus two fixed values for group SAPI and TEI, SAPG and TEIG. The SAPG equals 02H(C/R=1) or 00H(C/R=0) which corresponds to SAPI = 0. The TEIG equals FFH which corresponds to TEI = 127. Incoming frame with 1<sup>st</sup> address octet= (SAP1 or SAP2 or SAPG) and 2<sup>nd</sup> address octet= (TEI1 or TEI2 or TEIG) will be stored in the receive FIFO, with flag and FCS fields being discarded and stuffed bits being removed.

The valid address combinations are :

- SAP1 and TEI1
- SAP1 and TEI=127
- SAP2 and TEI2
- SAP2 and TEI=127
- SAPI=0 and TEI1
- SAPI=0 and TEI2
- SAPI=0 and TEI=127

The receive frame address comparisons can be disabled (masked) per bit basis by setting the D\_SAM and D\_TAM registers, but comparisons with the SAPG or TEIG cannot be disabled.

### 7.6.2 Reception of Frames in D Channel

A 128-byte FIFO is provided in the receive direction. The data movement is handled by interrupts.

There are two interrupt sources: Receive Message Ready (D\_RMR) and Receive Message End (D\_RME). The D\_RMR interrupt indicates that at least 64 bytes of data have been received and the message/ frame is not ended. Upon D\_RMR interrupt, the microprocessor reads out 64 bytes of data from the FIFO. The D\_RME interrupt indicates the last segment of a message or a



## ***W6692A PCI ISDN S/T-Controller***

message with length  $\leq 64$  bytes has been received. The length of data is less than or equal to 64 and is specified in the D\_RBCL register.

If the length of the last segment of message is 64, only D\_RME interrupt is generated and the RBC5-0 bits in D\_RBCL register are 000000B.

The data between the opening flag and the CRC field are stored in D\_RFIFO. For LAPD frame, this includes the address field, control field and information field.

When a D\_RMR or D\_RME interrupt is generated, the micro-processor must read out the data from D\_RFIFO and issues the Receive Message Acknowledgement command (D\_CMDR: RACK bit) to explicitly acknowledge the interrupt. The microprocessor must handle the interrupt before more than 64 bytes of data are received. This corresponds to a maximum microprocessor reaction time of 32 ms at 16 kbps data rate.

If the microprocessor is late in handling the interrupt, the incoming additional bytes will result in a "data overflow" interrupt and status bit.

### **7.6.3 Transmission of Frames in D Channel**

A 128-byte FIFO is provided in the transmit direction. If the transmit FIFO is ready (which is indicated by a D\_XFR interrupt), the micro-processor can write up to 64 bytes of data into the FIFO and use the XMS command bit to start frame transmission. The HDLC transmitter sends the opening flag first and then sends the data in the transmit FIFO.

The microprocessor must write the address, control and information field of a frame into the transmit FIFO.

Every time no more than 64 bytes of data are left in the transmit FIFO, the transmitter generates a D\_XFR interrupt to request another block of data. The microprocessor can then write further data to the transmit FIFO and enables the subsequent transmission by issuing an XMS command.

If the data written to the FIFO is the last segment of a frame, the microprocessor issues the XME (Transmit Message End) and XMS command bits to finish the frame transmission. The transmitter then transmits the data in the FIFO and appends CRC and closing flag.

If the microprocessor fails to respond the D\_XFR interrupt within a given time (32 ms), a data underrun condition will occur. The W6692A will automatically reset the transmitter and send inter frame time fill pattern (all 1's) on D channel. The microprocessor is informed about this condition via an XDUN (Transmit Data Underrun) interrupt in D\_EXIR register. The microprocessor must wait until transmit FIFO ready (via XFR interrupt), re-write data, and issue XMS command to re-transmit the data.

It is possible to abort a frame by issuing a D\_CMDR:XRST (D channel Transmitter Reset) command. The XRST command resets the transmitter and causes a transmit FIFO ready condition.

After the microprocessor has issued the XME command, the successful termination of transmission is indicated by an D\_XFR interrupt.



## ***W6692A PCI ISDN S/T-Controller***

The inter-frame time fill pattern must be all 1's, according to ITU-T I.430.

Collisions which occur on the D channel of S interface will cause an D\_EXIR:XCOL interrupt. A XRST (Transmitter Reset) command must be issued and software must wait until transmit FIFO ready (via XFR interrupt), re-write data, and issue XMS command to re-transmit the data.

### **7.7 B Channel HDLC Controller**

There are two B channel HDLC controllers. Each B channel HDLC controller provides two operation modes :

#### **- Transparent mode**

Characteristics :

- \* 2 byte address field
- \* Receive address comparison maskable bit-by-bit
- \* Data between opening flag and CRC (not included) stored in receive FIFO
- \* Flag generation/ deletion
- \* Frame Check Sequence generation/ check with CRC\_ITU-T polynomial
- \* Zero bit insertion/ deletion

#### **- Extended transparent mode**

Characteristics :

- \* All data transmitted/ received without modification
- \* No address comparison
- \* No flag generation/ detection
- \* No FCS generation/ check
- \* No bit stuffing

For PCM-HDLC connection, only extended transparent mode can be selected.

The data rate in B channel can be set at 64 kbps or 56 kbps by the B1\_MODE (B2\_MODE) : SW56 bit.

#### **7.7.1 Reception of Frames in B Channel**

A 128-byte FIFO is provided in the receive direction. The receive FIFO threshold can be set at 64 or 96 bytes by the Bn\_MODE register. If the number of received data reaches the threshold, a Receive Message Ready (RMR) interrupt will be generated.

The operations for reception of frames differ in each mode:

**Transparent mode:** The received frame address is compared with the contents in receive address registers. In addition, the comparisons can be selectively masked bit-by-bit via address mask registers. Comparison is disabled when the corresponding mask bit is "1".



### ***W6692A PCI ISDN S/T-Controller***

In addition, flag recognition, CRC check and zero bit deletion are also performed. The result of CRC check is indicated in Bn\_STAR: CRCE bit. The data between opening flag and CRC field (not included) is stored in receive FIFO. Two interrupts are used for the reception of data. The RMR interrupt in Bn\_EXIR register indicates at least a threshold block of data have been put in the receive FIFO. The RME interrupt in Bn\_EXIR register indicates the end of frame has been received. The micro-processor can read out a threshold length of data from receive FIFO at RMR interrupt, or all the data in receive FIFO at RME interrupt. At each RMR/ RME interrupt, micro-processor must issue a Receive Message Acknowledgement(RACK) command to explicitly acknowledge the interrupt.

The microprocessor reaction time for RMR/ RME interrupt depends on the FIFO threshold setting and B channel data rate. For example, it is 8 ms if the FIFO threshold is 64 and the B channel data rate is 64 kbps.

If the microprocessor is late in handling the interrupt, the incoming additional bytes will result in a "data overflow" interrupt and status bit.

**Extended transparent mode:** In this mode, all data received are stored in the receive FIFO without any modification. Every time up to a threshold length of data has been stored in the FIFO, a Bn\_RMR interrupt is generated.

In this mode, there is no RME interrupt.

The microprocessor must react to the RMR interrupt in time, otherwise a "data overflow" interrupt and status bit will be generated.

## **7.7.2 Transmission of Frames in B Channel**

A 128-byte FIFO is provided in the transmit direction. The FIFO threshold can be set at 64 or 96 bytes. The transmitter and receiver use the same FIFO threshold setting.

The transmit operations differ in both modes:

### **Transparent mode:**

In this mode, the following functions are performed by the transmitter automatically:

- Flag generation
- CRC generation
- Zero bit insertion

The fields such as address, control and information are provided by the microprocessor and are stored in transmit FIFO. To start the frame transmission, the microprocessor issues a XMS (Transmit Message Start) command. The transmitter requests another block of data via XFR interrupt when more than a threshold length of vacancies are left in the FIFO. The micro-processor then writes up to a threshold length of data into the FIFO and activates the subsequent transmission of the frame by a XMS command too. The microprocessor indicates the end of the frame transmission by issuing XME (Transmit Message End) and XMS commands at the same time. The transmitter then transmits all the data left in the transmit FIFO and appends the CRC and closing flag. After this, a XFR interrupt is generated.

The inter-frame time fill pattern can be programmed to 1's or flags.



## W6692A PCI ISDN S/T-Controller

During the frame transmission, the microprocessor reaction time for the XFR interrupt depends on the FIFO threshold setting and B channel data rate. For example, it is 8 ms if the FIFO threshold is 64 and the B channel data rate is 64 kbps. If the microprocessor fails to respond within the given reaction time, the transmit FIFO will be underrun. In this case, the W6692A will automatically reset the transmitter and send the inter frame time fill pattern on B channel. The microprocessor is informed about this via a Transmit Data Underrun interrupt (XDUN bit in Bn\_EXIR register). The microprocessor must wait until transmit FIFO ready (via XFR interrupt), re-write data, and issue XMS command to re-transmit the data.

The microprocessor can abort a frame transmission by issuing a Transmitter Reset command (XRES bit in Bn\_CMDR register). The XRES command resets the transmitter and sends inter frame time fill pattern on B channel. It also results in a transmit pool ready condition.

### Extended transparent mode:

All the data in the transmit FIFO are transmitted without any modification, i.e. no flags and CRCs are inserted, and no bit stuffing is performed.

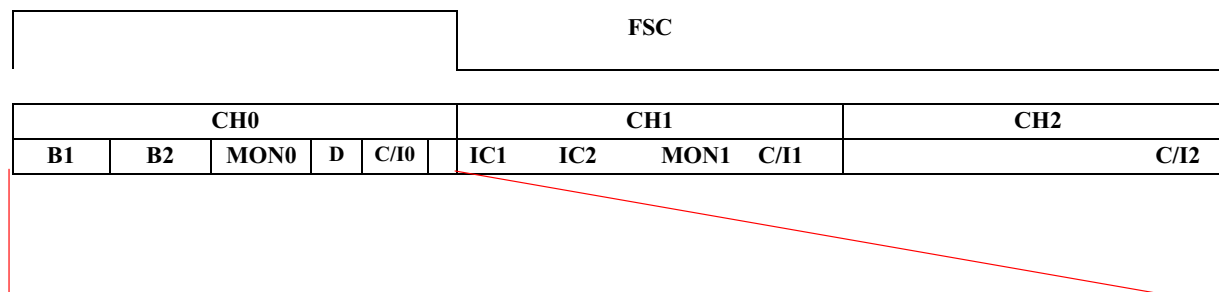
Transmission is started by a XMS command. The transmitter requests another block of data via XFR interrupt when more than a threshold length of vacancies are left in the FIFO. The microprocessor reacts to this condition by writing up to a threshold length of data into the transmit FIFO and issues a XMS command to continue the message transmission.

The microprocessor reaction time depends on the FIFO threshold setting and B channel data rate. For example, it is 8 ms if the FIFO threshold is 64 and the B channel data rate is 64 kbps. If the microprocessor fails to respond within the given reaction time, the transmit FIFO will hold no data to transmit. In this case, the W6692A will automatically reset the transmitter and send idle channel pattern defined in Bn\_IDLE register. The microprocessor is informed about this via a Transmit Data Underrun interrupt (XDUN bit in Bn\_EXIR register). The microprocessor must wait until transmit FIFO ready (via XFR interrupt), re-write data, and issue XMS command to re-transmit the data.

## 7.8 GCI Mode Serial Interface Bus

The GCI is a generalization and enhancement of the general purpose, serial interface bus. The channel structure of the GCI mode is depicted below. The timing is compatible with Siemens's IOM-2 TE mode.

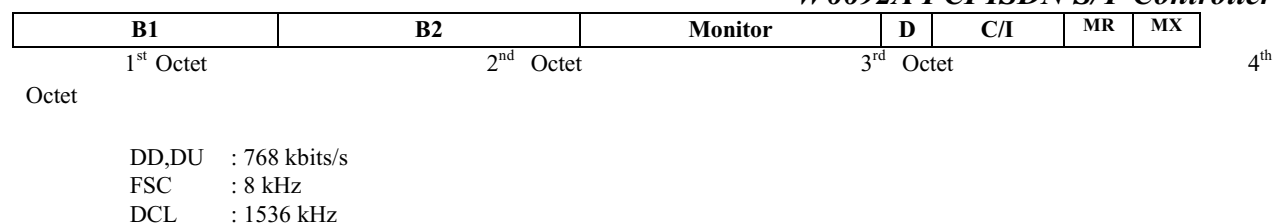
### Channel Structure of the W6692A GCI Mode:







### W6692A PCI ISDN S/T-Controller



**FIG 7.8 GCI MODE CHANNEL STRUCTURE**

**GCI slave mode:** connects to U transceiver such as PEB 2091, CH0 used only.

**GCI master mode:** connects to PSB 2165 ARCOFI, uses B1, B2, IC1 and IC2 for voice communication, uses MON1 for programming, uses C/I1 for pins SA-SD access.

#### 7.8.1 GCI Mode C/I0 Channel Handling

The Command/Indication channel 0 carries real-time status information between the W6692A and another device connected to the GCI bus interface.

One C/I0 channel conveys the commands and indications between a layer 1 device and layer 2 device. This C/I0 channel is accessed via register CIR (in receive direction, layer 1 to layer 2) and register CIX (in transmit direction, layer 2 to layer 1). The C/I code is 4-bit long.

- In the receive direction, the code from layer 1 is continuously monitored, with an interrupt being generated anytime a change occurs. A new code must be found in two consecutive GCI frames to be considered valid and to trigger a C/I code change interrupt status (double last look criterion).
- In the transmit direction, the code written in CIX is continuously transmitted in the channel.

#### 7.8.2 GCI Mode Monitor Channel Handling

The Monitor channel protocol is a handshake protocol used for high speed information exchange between the W6692A and other devices. The Monitor channel is necessary for:

- Programming and controlling devices attached to the GCI interface.
- Data exchange between two microprocessor systems attached to two different devices on one GCI backplane. Use of the Monitor channel avoids the necessity of a dedicated serial communication path between two systems.

The Monitor channel operates on an asynchronous basis. While data transfers on the bus take place synchronized to frame sync, the flow of data is controlled by a handshake procedure using the Monitor Channel Receiver (MOR) and Monitor Channel Transmit (MOX) bits. When data is placed into the Monitor channel and the MX bit is activated. This data will be transmitted repeatedly once per 8 KHz frame until the transfer is acknowledged via the MR bit.



## W6692A PCI ISDN S/T-Controller

The microprocessor may either enforce a 1 (idle state) in MR, MX by setting the control bit MRC or MXC (MOCR register) to 0, or enable the control of these bits internally by the W6692A according to the Monitor channel protocol. Thus, before a data exchange can begin, the control bit MRC, or MXC should be set to 1 by the microprocessor.

The relevant status bits are:

- For the reception of Monitor data: MDR (Monitor Channel Data Received )  $\Leftrightarrow$  MER (Monitor Channel End of Reception)
- For the transmission of Monitor data: MDA (Monitor Channel Data Acknowledged )  $\Leftrightarrow$  MAB (Monitor Channel Data Abort)

About the status bit MAC( Monitor Channel Transmit Active) indicates whether a transmission is progress.

- If set MAC = 0, the previous transmission has been terminated. Before starting a transmission, the microprocessor should verify that the transmitter is inactive.
- If set MAC = 1, after having written data into the Monitor Transmit Channel (MOX) register, the microprocessor sets this bit to 1. This enables the MX bit to go active (0), indicating the presence of valid Monitor data (contents of MOX) in the corresponding frame.

The receiving device stores the Monitor byte in its MOR (Monitor Receive Register) and generates a MDR (Monitor Channel Data Receive) interrupt status. Alerted by the MDR interrupt, the microprocessor reads the MOR register. When it is ready to accept data, it sets the MR control bit MRC to 1 to enable the receiver to store succeeding Monitor channel bytes and acknowledge them according to the Monitor channel protocol. In addition, it enables other Monitor channel interrupts by setting Monitor Channel Interrupt Enable to 1.

The first Monitor channel byte is acknowledged by the receiving device setting the MR bit to 0. This causes a MDA (Monitor Channel Data Acknowledge) interrupt status at the transmitter. A new Monitor channel data byte can now be written by the microprocessor in MOX register. The MX bit is still in the active (0) state. The transmitter indicates a new byte in the Monitor channel by returning the MX bit active after sending it once in the inactive state. The receiver stores the Monitor channel byte in MOR register and generates a new MDR interrupt status. When the microprocessor has read the MOR register, the receiver acknowledges the data by returning the MR bit active after sending it once in the inactive state. This in turn causes the transmitter to generate a MDA interrupt status. This "MDA interrupt  $\Rightarrow$  write data  $\Rightarrow$  MDR interrupt  $\Rightarrow$  read data  $\Rightarrow$  MDA interrupt" handshake procedure is repeated as long as the transmitter has data to send.

When the last byte has been acknowledged by the receiver (MDA interrupt status), the microprocessor sets the Monitor channel Transmit Control bit MXC to 0. This enforces an inactive (1) state in the MX bit. Two frames of MX inactive signifies the end of a message. Thus, a MER (Monitor channel End of Reception) interrupt status is generated by the receiver when the MX is received in the inactive state in two consecutive frames. As a result, the microprocessor sets the MR control bit MRC to 0, which in turn enforces an inactive state in the MR bit. This marks the end of the transmission, making the MAC (Monitor channel Active) bit return to 0.

During a transmission process, it is possible for the receiver to ask a transmission to be aborted by sending an inactive MR bit value in two consecutive frames. This is effected by the microprocessor writing the MR control bit MRC to 0. An aborted transmission is indicated by a MAB (Monitor Channel Data Abort) interrupt status at the transmitter.

## 7.9 PCI/MP Interface Circuit

### 7.9.1 PCI Slave Mode And Configuration Serial EEPROM

W6692A implements target mode function which meets PCI local bus specification revision 2.2 and PCI Power Management 1.1. All the signals are 5V, 33 MHz compatible. A single function, type 00h configuration header is implemented for control of



## W6692A PCI ISDN S/T-Controller

the internal ISDN device and external peripheral device(s). Memory mode and/or IO mode can be used for W6692A's register access.

After power on reset, W6692A starts to read configuration data from serial EEPROM. The first word read is Vendor ID, if it equals FFFFH, a EEPROM empty condition is assumed and chip's internal default configuration data is used, otherwise, the configuration data stored in serial EEPROM is used. The default configuration data is as follows:

Vendor ID	: 1050H (Winbond's ID)
Device ID	: 6692H
Class Code	: 02 04 00H
Revision ID	: 00H
Interface Code	: 00H
Subclass Code	: 04H
Base Class Code	: 02H
Subsystem Vendor ID	: FFFFH
Subsystem ID	: FFFFH
Memory Base Address Register	: Enabled and Implemented at 10H
IO Base Address Register	: Enabled and Implemented at 14H
Power Management Capability (PMC)	: FE62H

A 9346/93C46 type serial EEPROM is used for configuration data storage. The EEPROM's data layout is as follows :

Address/Byte	1	0
0 <sub>H</sub>	Vendor ID	
2 <sub>H</sub>	Device ID	
4 <sub>H</sub>	Interface Code	Revision ID
6 <sub>H</sub>	Base Class Code	Subclass Code
8 <sub>H</sub>	Subsystem Vendor ID	
A <sub>H</sub>	Subsystem ID	
C <sub>H</sub>	Address Register Control	
E <sub>H</sub>	PMC	

**FIG.7.9 SERIAL EEPROM DATA LAYOUT**

Word 6 (Bytes 12,13) is for Address Register Control, its format is :

15	14	13	12	0
MEN	IEN	PRE	not used	

The Address Register Control determines the PCI address register's implementation. Bit 13 is the prefetchable bit in Memory Base Address register.

MEN	IEN	PCI Configuration Space Location 10H	PCI Configuration Space Location 14H	Bit 13 used ?
-----	-----	---	---	------------------



### W6692A PCI ISDN S/T-Controller

1	1	Memory Base Address Reg.	IO Base Address Reg.	yes
1	0	Memory Base Address Reg.	Not Implemented	yes
0	1	IO Base Address Reg.	Not Implemented	no
0	0	Not Implemented	Not Implemented	no
EEPROM empty		Memory Base Address Reg.	IO Base Address Reg.	PRE=0

In all cases, Memory Base Address register allocates 4096 byte spaces and IO Base Address register allocates 256 byte space.

Word 7 is Power Management Capability register. It replaces the chip's default value if EEPROM is not empty.

W6692A provides an EPCTL register for on-board access of the serial EEPROM. Software is responsible for creation of the serial EEPROM's waveform and timing and can read, write or erase the EEPROM's content.

## 7.9.2 8-bit Microprocessor Interface

At power up, the reset pin RST# must be asserted to initialize the chip. At rising edge of RST#, data value at CLK pin determines the operation modes: active clock for PCI mode, HIGH for Intel bus mode, LOW for Motorola bus mode.

## 7.10 Peripheral Control

In PCI card with POTS application, the peripheral devices such as CODEC, DTMF and SLIC can be directly controlled by W6692A, therefore eliminates the need for another PCI controller chip. The peripheral control function includes timer, interrupt inputs and programmable IOs or microprocessor interface.

There are two timers implemented in W6692A: TIMR1 and TIMR2. TIMR1 is a long period timer which can be used to control the cadence of ring tone. TIMR2 is a short period timer which can be used to generate the 20 Hz ring signal.

	Address	Interrupt status	Interrupt mask	Output pin	Period	Cyclic
TIMR1	10H	DEXIR:T1EXP	DEXIM:T1EXP	No	(0..127)x 100 ms	yes (CNT=7)
TIMR2	4CH	DEXIR:TIN2	DEXIM:TIN2	TOUT2	(1..63) ms	yes(TMD=1)

There are two interrupt input pins : XINTIN0, XINTIN1. Whenever signal level changes (either rising or falling), a maskable interrupt is generated which in turn will make an interrupt request on PCI bus if it is unmasked. The interrupt status bits are ISTA:XINT0, ISTA:XINT1. The mask bits are IMASK:XINT0, IMASK:XINT1. In addition, the signal level can be read at bits SQR:XIND0, SQR:XIND1. These pins can be used for monitor of SLIC hook state and/or DTMF data valid status.

The IO interface can be programmed as simple IO (PCTL:XMODE=0) or 8-bit microprocessor interface (PCTL:XMODE=1). As simple IOs, the pin data are accessed via XADDR and XDATA registers. The register data is output on the pin if its output enable bit is set, the read data reflects the current level of pin. In this mode, a maximum of 11 IO ports are supported.

If programmed as 8-bit microprocessor mode, an 8-bit multiplexed bus is used to control peripheral devices. The address and data are multiplexed on XAD7-0. XALE is used for address latch and XRDB, XWRB are used for read/write strobe. To access peripheral device, first write the desired address in XADDR register and then read/write data at XDATA register. In this mode, a maximum of 256 byte ports can be supported by adding some glue TTLs on board.



***W6692A PCI ISDN S/T-Controller***



## W6692A PCI ISDN S/T-Controller

### 8. REGISTER DESCRIPTIONS

**Note :** For all the internal registers, only byte access is allowed in all cases.

#### 8.1 Chip Control and D\_ch HDLC controller

**TABLE 8.1 REGISTER ADDRESS MAP: CHIP CONTROL AND D CHANNEL HDLC**

Section	Offset	Access	Register Name	Description
8.1.1	00/00	R	D_RFIFO	D channel receive FIFO
8.1.2	04/01	W	D_XFIFO	D channel transmit FIFO
8.1.3	08/02	W	D_CMDR	D channel command register
8.1.4	0C/03	R/W	D_MODE	D channel mode control
8.1.5	10/04	R/W	TIMR1	Timer 1
8.1.6	14/05	R_clear	ISTA	Interrupt status register
8.1.7	18/06	R/W	IMASK	Interrupt mask register
8.1.8	1C/07	R_clear	D_EXIR	D channel extended interrupt
8.1.9	20/08	R/W	D_EXIM	D channel extended interrupt mask
8.1.10	24/09	R	D_XSTA	D channel transmit status
8.1.11	28/0A	R	D_RSTA	D channel receive status
8.1.12	2C/0B	R/W	D_SAM	D channel address mask 1
8.1.13	30/0C	R/W	D_SAP1	D channel individual SAPI 1
8.1.14	34/0D	R/W	D_SAP2	D channel individual SAPI 2
8.1.15	38/0E	R/W	D_TAM	D channel address mask 2
8.1.16	3C/0F	R/W	D_TEI1	D channel individual TEI 1
8.1.17	40/10	R/W	D_TEI2	D channel individual TEI 2
8.1.18	44/11	R	D_RBCH	D channel receive frame byte count high
8.1.19	48/12	R	D_RBCL	D channel receive frame byte count low
8.1.20	4C/13	R/W	TIMR2	Timer 2
8.1.21	50/14	R/W	L1_RC	GCI layer 1 ready code
8.1.22	54/15	R/W	CTL	Control register
8.1.23	58/16	R	CIR	Command/Indication receive
8.1.24	5C/17	R/W	CIX	Command/Indication transmit
8.1.25	60/18	R	SQR	S/Q channel receive register
8.1.26	64/19	R/W	SQX	S/Q channel transmit register
8.1.27	68/1A	R/W	PCTL	Peripheral control register
8.1.28	6C/1B	R	MO0R	Monitor receive channel 0
8.1.29	70/1C	R/W	MO0X	Monitor transmit channel 0
8.1.30	74/1D	R_clear	MO0I	Monitor channel 0 interrupt
8.1.31	78/1E	R/W	MO0C	Monitor channel 0 control register

**W6692A PCI ISDN S/T-Controller**

8.1.32	7C/1F	R/W	GCR	GCI mode control/ status register
8.1.33	F4/3D	R/W	XADDR	Peripheral address register
8.1.34	F8/3E	R/W	XDATA	Peripheral data register
8.1.35	FC/3F	R/W	EPCTL	Serial EEPROM control
8.1.36	6D/40	R	MO1R	Monitor receive channel 1
8.1.37	71/41	R/W	MO1X	Monitor transmit channel 1
8.1.38	75/42	R_clear	MO1I	Monitor channel 1 interrupt
8.1.39	79/43	R/W	MO1C	Monitor channel 1 control
8.1.40	6E/44	R	IC1R	GCI IC1 receive
8.1.41	72/45	R/W	IC1X	GCI IC1 transmit
8.1.42	6F/46	R	IC2R	GCI IC2 receive
8.1.43	73/47	R/W	IC2X	GCI IC2 transmit
8.1.44	7D/48	R	CI1R	GCI CI1 indication
8.1.45	7E/49	R/W	CI1X	GCI CI1 command
8.1.46	76/4A	R_clear	GCI_EXIR	GCI extended interrupt
8.1.47	7A/4B	R/W	GCI_EXIM	GCI extended interrupt mask

**TABLE 8.2 REGISTER SUMMARY: CHIP CONTROL AND D CHANNEL HDLC**

Offset	R/W	Name	7	6	5	4	3	2	1	0
00/00	R	D_RFIFO								
04/01	W	D_XFIFO								
08/02	W	D_CMDR	RACK	RRST	0	STT1	XMS	0	XME	XRST
0C/03	R/W	D_MODE	0	RACT	XACTB	0	PMES	MFD	DLP	RLP
10/04	R/W	TIMR1	TIMD	CNT6	CNT5	CNT4	CNT3	CNT2	CNT1	CNT0
14/05	R_clr	ISTA	D_RMR	D_RME	D_XFR	XINT1	XINT0	D_EXI	B1_EXI	B2_EXI
18/06	R/W	IMASK	D_RMR	D_RME	D_XFR	XINT1	XINT0	D_EXI	B1_EXI	B2_EXI
1C/07	R_clr	D_EXIR	RDOV	XDUN	XCOL	TIN2	GCI	ISC	T1EXP	0
20/08	R/W	D_EXIM	RDOV	XDUN	XCOL	TIN2	GCI	ISC	T1EXP	1
24/09	R	D_XSTA	XDOW	0	XBZ	DRDY	0	0	0	0
28/0A	R	D_RSTA	0	RDOV	CRCE	RMB	0	0	0	0
2C/0B	R/W	D_SAM	SAM7	SAM6	SAM5	SAM4	SAM3	SAM2	SAM1	SAM0
30/0C	R/W	D_SAP1	SA17	SA16	SA15	SA14	SA13	SA12	SA11	SA10
34/0D	R/W	D_SAP2	SA27	SA26	SA25	SA24	SA23	SA22	SA21	SA20
38/0E	R/W	D_TAM	TAM7	TAM6	TAM5	TAM4	TAM3	TAM2	TAM1	TAM0
3C/0F	R/W	D_TEI1	TA17	TA16	TA15	TA14	TA13	TA12	TA11	TA10
40/10	R/W	D_TEI2	TA27	TA26	TA25	TA24	TA23	TA22	TA21	TA20
44/11	R	D_RBCH	VN1	VN0	LOV	RBC12	RBC11	RBC10	RBC9	RBC8
48/12	R	D_RBCL	RBC7	RBC6	RBC5	RBC4	RBC3	RBC2	RBC1	RBC0
4C/13	W	TIMR2	TMD	TIDLE	TCN5	TCN4	TCN3	TCN2	TCN1	TCN0
50/14	R/W	L1_RC	0	0	0	0	RC3	RC2	RC1	RC0

**W6692A PCI ISDN S/T-Controller**

Offset	R/W	Name	7	6	5	4	3	2	1	0
54/15	R/W	CTL	0	0	SRST	0	0	0	OPS1	OPS0
58/16	R	CIR	SCC	ICC			CODR3	CODR2	CODR1	CODR0
5C/17	R/W	CIX	0	0	0	0	CODX3	CODX2	CODX1	CODX0
60/18	R	SQR	XIND1	XIND0	MSYN	SCIE	S1	S2	S3	S4
64/19	R/W	SQX	0	0	0	SCIE	Q1	Q2	Q3	Q4
68/1A	R/W	PCTL	OE5	OE4	OE3	OE2	OE1	OE0	XMODE	PXC
6C/1B	R	MO0R								
70/1C	R/W	MO0X								
74/1D	R_clr	MO0I					MDR0	MER0	MDA0	MAB0
78/1E	R/W	MO0C	0	0	0	0	MRIE0	MRC0	MXIE0	MXC0
7C/1F	R/W	GCR	MAC0	MAC1	GACT	TLP	GRLP	SPU	PD	GMODE
F4/3D	R/W	XADDR	XA7	XA6	XA5	XA4	XA3	XA2	XA1	XA0
			/IO7	/IO6	/IO5	/IO4	/IO3	/IO2	/IO1	/IO0
F8/3E	R/W	XDATA	XD7	XD6	XD5	XD4	XD3	XD2	XD1	XD0
								/IO10	/IO9	/IO8
FC/3F	R/W	EPCTL	0	0	0	SDI	EN	SK	CS	SDO
6D/40	R	MO1R								
71/41	R/W	MO1X								
75/42	R_clr	MO1I					MDR1	MER1	MDA1	MAB1
79/43	R/W	MO1C	0	0	0	0	MRIE1	MRC1	MXIE1	MXC1
6E/44	R	IC1R	IC1_7	IC1_6	IC1_5	IC1_4	IC1_3	IC1_2	IC1_1	IC1_0
72/45	R/W	IC1X	IC1_7	IC1_6	IC1_5	IC1_4	IC1_3	IC1_2	IC1_1	IC1_0
6F/46	R	IC2R	IC2_7	IC2_6	IC2_5	IC2_4	IC2_3	IC2_2	IC2_1	IC2_0
73/47	R/W	IC2X	IC2_7	IC2_6	IC2_5	IC2_4	IC2_3	IC2_2	IC2_1	IC2_0
7D/48	R	CI1R	0	0	CI1R_6	CI1R_5	CI1R_4	CI1R_3	CI1R_2	CI1R_1
7E/49	R/W	CI1X	0	0	CI1X_6	CI1X_5	CI1X_4	CI1X_3	CI1X_2	CI1X_1
76/4A	R_clr	GCI_EXIR	0	0	0	MO1C	MO0C	IC1	IC2	CI1
7A/4B	R/W	GCI_EXIM	1	1	1	MO1C	0	IC1	IC2	CI1

**8.1.1 D\_ch receive FIFO      D\_RFIFO      Read    Address 00H/00H**

The D\_RFIFO has a length of 128 bytes.

After a D\_RMR interrupt, exactly 64 bytes are available.

After a D\_RME interrupt, the number of bytes available equals RBC5-0 bits in the D\_RBCL register.

**8.1.2 D\_ch transmit FIFO      D\_XFIFO      Write    Address 04H/01H**

The D\_XFIFO has a length of 128 bytes.





### W6692A PCI ISDN S/T-Controller

After an D\_XFR interrupt, up to 64 bytes of data can be written into this FIFO for transmission. At the first time, up to 128 bytes of data can be written.

#### 8.1.3 D\_ch command register      D\_CMDR      Write      Address 08H/02H

Value after reset: 00H

7	6	5	4	3	2	1	0
RACK	RRST	0	STT1	XMS	0	XME	XRST

##### **RACK      Receive Acknowledge**

After a D\_RMR or D\_RME interrupt, the processor must read out the data in D\_RFIFO and then sets this bit to acknowledge the interrupt. Writing "0" to this bit has no effect.

##### **RRST      Receiver Reset**

Setting this bit resets the D\_ch HDLC receiver and clears the D\_RFIFO data. Writing "0" to this bit has no effect.

##### **STT1      Start Timer 1**

The timer 1 is started when this bit is set to one. The timer is stopped when it expires or by a write of the TIMR1 register. Writing "0" to this bit has no effect.

##### **XMS      Transmit Message Start/Continue**

Setting this bit will start or continue the transmission of a frame. The opening flag is automatically added by the HDLC controller. Writing "0" to this bit has no effect.

##### **XME      Transmit Message End**

Setting this bit indicates the end of frame transmission.. The D\_ch HDLC controller automatically appends the CRC and the closing flag after the data transmission. Writing "0" to this bit has no effect.

**Note:** If the frame  $\leq$  64 bytes, XME plus XMS commands must be issued at the same time.

##### **XRST      Transmitter Reset**

Setting this bit resets the D\_ch HDLC transmitter and clears the D\_XFIFO. The transmitter will send inter frame time fill pattern (which is 1's) immediately. This command also results in a transmit FIFO ready condition. Writing "0" to this bit has no effect.

#### 8.1.4 D\_ch Mode Register      D\_MODE      Read/Write      Address 0CH/03H

Value after reset : 00H

7	6	5	4	3	2	1	0
0	RACT	XACTB	0	PMES	MFD	DLP	RLP

**W6692A PCI ISDN S/T-Controller**
**RACT Receiver Active**

Setting this bit activates the D\_ch HDLC receiver. This bit can be read. The receiver must be in active state in order to receive data.

**XACTB Transmitter Active**

Resetting this bit activates the D\_ch HDLC transmitter. This bit can be read. The transmitter must be in active state in order to transmit data. Note this bit is active LOW.

**PMES PME Trigger Select**

- 0 : PCI power management event triggered by D\_RMR or D\_RME interrupt
- 1 : PCI power management event triggered by layer 1 enters F7 state

**MFD Multiframe Disable**

This bit is used to enable or disable the multiframe structure on S/T interface :

- 0 : Multiframe is enabled
- 1 : Multiframe is disabled

**DLP Digital Loopback**

Setting this bit activates the digital loopback function. The transmitted digital 2B+D channels are looped to the received 2B+D channels. Note that after hardware reset, the internal clocks will turn off if the S bus is not connected or if there is no signal on the S bus. In this case, the C/I command ECK must be issued to enable loopback function.

**RLP Remote Loopback**

Setting this bit to "1" activates the remote loopback function. The received 2B channels from the S interface are looped to the transmitted 2B channels of S interface. The D channel is not looped in this loopback function.

**Bits 7, 4 Reserved**

These bits are reserved. The write values are don't care, but are read as zero.

**8.1.5 Timer 1 Register      TIMR1      Read/Write      Address 10H/04H**

Value after reset : 00H

7	6	5	4	3	2	1	0
T1MD	CNT6	CNT5	CNT4	CNT3	CNT2	CNT1	CNT0

**T1MD Timer1 Mode**



## W6692A PCI ISDN S/T-Controller

0 = Single mode: The timer counts once and generates a T1EXP interrupt when expires.

1 = Periodical mode: The timer counts periodically and generates an interrupt at each expiration.

### CNT6-0 Count Value

The expiration time is defined as:

$$T1 = CNT[6:0] * 0.1 \text{ second}$$

After writing this register, STT1 bit in D\_CMDR register must be set to start the timer. This register can be read only after the timer has been started. The read value indicates the timer's current count value. In case layer 1 is not activated, a C/I command "ECK" must be issued in addition to the STT1 command to start the timer.

The timer is stopped when it expires (T1MD=0) or TIMR1 register is re-written.

### 8.1.6 Interrupt Status Register      ISTA      Read\_clear      Address 14H/05H

Value after reset : 00H

7	6	5	4	3	2	1	0
D_RMR	D_RME	D_XFR	XINT1	XINT0	D_EXI	B1_EXI	B2_EXI

#### D\_RMR      D\_ch Receive Message Ready

A 64-byte data is available in the D\_RFIFO. The frame is not complete yet.

#### D\_RME      D\_ch Receive Message End

The last part of a frame with length > 64 bytes or a whole frame with length ≤ 64 bytes has been received. The whole frame length is obtained from D\_RBCH + D\_RBCL registers. The length of data in the D\_RFIFO equals:

data length = RBC5-0      if RBC5-0 ≠ 0

data length = 64      if RBC5-0 = 0

#### D\_XFR      D\_ch Transmit FIFO Ready

This bit indicates that the transmit FIFO is ready to accept data. Up to 64 bytes of data can be written into the D\_XFIFO.

An D\_XFR interrupt is generated in the following cases :

- After an XMS command, when ≥64 bytes of XFIFO is empty
- After an XMS together with an XME command is issued, when the whole frame has been transmitted
- After an XRST command
- After hardware reset

#### XINT1      XINTIN1 Interrupt

This bit indicates that level change occurs at XINTIN1 pin. Both positive and negative edges will cause an interrupt.

#### XINT0      XINTIN1 Interrupt

This bit indicates that level change occurs at XINTIN0 pin. Both positive and negative edges will cause an interrupt.

**W6692A PCI ISDN S/T-Controller**
**D\_EXI      D\_ch Extended Interrupt**

This bit indicates that at least one interrupt bit has been set in D\_EXIR register.

**B1\_EXI      B1\_ch Extended Interrupt**

This bit indicates that at least one interrupt bit has been set in B1\_EXIR register.

**B2\_EXI      B2\_ch Extended Interrupt**

This bit indicates that at least one interrupt bit has been set in B2\_EXIR register.

**Note :** A read of the ISTA register clears all bits except D\_EXI, B1\_EXI and B2\_EXI bits. D\_EXI bit is cleared when all bits in D\_EXIR register are cleared. B1\_EXI bit is cleared by reading B1\_EXI register and B2\_EXI bit is cleared by reading B2\_EXIR register.

**8.1.7 Interrupt Mask Register      IMASK      Read/Write      Address 18H/06H**

Value after reset: FFH

7	6	5	4	3	2	1	0
D_RMR	D_RME	D_XFR	XINT1	XINT0	D_EXI	B1_EXI	B2_EXI

Setting the bit to "1" masks the corresponding interrupt source in ISTA register. Masked interrupt status bits are read as zero. They are internally stored and pending until the mask bits are zero.

Setting the D\_EXI, B1\_EXI or B2\_EXI bit to "1" masks all the interrupts in D\_EXIR, B1\_EXIR or B2\_EXIR register, respectively.

**8.1.8 D\_ch Extended Interrupt Register      D\_EXIR      Read\_clear      Address 1CH/07H**

Value after reset: 00H

7	6	5	4	3	2	1	0
RDOV	XDUN	XCOL	TIN2	GCI	ISC	T1EXP	0

**RDOV      Receive Data Overflow**

Frame overflow (too many short frames) or data overflow occurs in the receive FIFO. In data overflow, the incoming data will overwrite the data in the receive FIFO. If RDOV interrupt occurs, software has to reset the receiver and discard the data received.

**XDUN      Transmit Data Underrun**

This interrupt indicates the D\_XFIFO has run out of data. In this case, the W6692A will automatically reset the transmitter and send the inter frame time fill pattern (all 1's) on D channel. The microprocessor must wait until transmit FIFO ready (via XFR interrupt), re-write data, and issue XMS command to re-transmit the data.

**XCOL      Transmit Collision**



### W6692A PCI ISDN S/T-Controller

This bit indicates a collision on the S-bus has been detected. W6692A will automatically reset the transmitter and software must wait until transmit FIFO ready (via XFR interrupt), re-write data, and issue XMS command to re-transmit the data.

#### TIN2 Timer 2 Expiration

This bit is set when Timer 2 counts down to zero.

#### GCI GCI Interrupt

This bit is set when at least one bit is set in GCI\_EXIR register.

#### ISC Indication or S Channel Change

A change in the layer 1 indication code or multiframe S channel has been detected. The actual value can be read from CIR or SQR registers.

#### T1EXP Timer 1 Expiration

Expiration occurs in the Timer 1.

-

### 8.1.9 D\_ch Extended Interrupt Mask Register D\_EXIM Read/Write Address 20H/08H

Value after reset: FFH

7	6	5	4	3	2	1	0
RDOV	XDUN	XCOL	TIN2	GCI	ISC	T1EXP	1

Setting the bit to "1" masks the corresponding interrupt source in D\_EXIR register. Masked interrupt status bits are read as zero. They are internally stored and pending until the mask bits are zero.

All the interrupts in D\_EXIR will be masked if the IMASK:D\_EXI bit is set to "1".

### 8.1.10 D\_ch Status Register D\_XSTA Read Address 24H/09H

Value after reset: 00H

7	6	5	4	3	2	1	0
XDOW	0	XBZ	DRDY	0	0	0	0

#### XDOW Transmit Data Overwritten

At least one byte of data has been overwritten in the D\_XFIFO. This bit is set by data overwritten condition and is cleared only by XRST command.

#### XBZ Transmitter Busy

This bit indicates the D\_HDLC transmitter is busy. The XBZ bit is active from the transmission of opening flag to the transmission of closing flag.

#### DRDY D Channel Ready



## W6692A PCI ISDN S/T-Controller

This bit indicates the status of layer 1 D channel.

0: The layer 1 D channel is not ready. No transmission is allowed.

1: The layer 1 D channel is ready. Layer 2 can transmit data to layer 1.

Note : Due to design mistake, DRDY=1 does not mean S/T layer 1 is in F7 state. Software has to check "DRDY=1 and C/I code=A18/10" in order to transmit.

### 8.1.11 D\_ch Receive Status Register      D\_RSTA      Read      Address 28H/0AH

Value after reset: 20H

7	6	5	4	3	2	1	0
0	RDOV	CRCE	RMB	0	0	0	0

#### RDOV      Receive Data Overflow

A "1" indicates that the D\_RFIFO is overflow. The incoming data will overwrite data in the receive FIFO. The data overflow condition will set both the status and interrupt bits. It is recommended that software must read the RDOV bit after reading data from D\_RFIFO at RMR or RME interrupt. The software must abort the data and issue a RRST command to reset the receiver if RDOV = 1. The frame overflow condition will not set this bit.

#### CRCE      CRC Error

This bit indicates the result of frame CRC check:

0: CRC correct

1: CRC error

#### RMB      Receive Message Aborted

A "1" means that a sequence of seven 1's was received and the frame is aborted. Software must issue RRST command to reset the receiver.

**Note:** Normally D\_RSTA register should be read by the microprocessor after a D\_RME interrupt. The contents of D\_RSTA are valid only after a D\_RME interrupt and remain valid until the frame is acknowledged via a RACK bit.

### 8.1.12 D\_ch SAPI Address Mask      D\_SAM      Read/Write      Address 2CH/0BH

Value after reset: 00H

7	6	5	4	3	2	1	0
SAM7	SAM6	SAM5	SAM4	SAM3	SAM2	SAM1	SAM0

This register masks(disables) the first byte address comparison of the incoming frame. If the mask bit is "1" the corresponding bit comparisons with D\_SAP1, D\_SAP2 are disabled. Comparison with SAPG is always performed.

**Note :** For the LAPD frame, the least significant two bits are the C/R bit and EA =0 bit. It is suggested that the comparison with C/R bit be masked. EA=0 for two octet address frame e.g LAPD, EA=1 for one octet address frame.



## W6692A PCI ISDN S/T-Controller

### 8.1.13 D\_ch SAPI1 Register D\_SAP1 Read/Write Address 30H/0CH

Value after reset: 00H

7	6	5	4	3	2	1	0
SA17	SA16	SA15	SA14	SA13	SA12	SA11	SA10

This register contains the first choice of the first byte address of received frame. For LAPD frame, SA17 - SA12 is the SAPI value, SA11 is C/R bit and SA10 is zero.

### 8.1.14 D\_ch SAPI2 Register D\_SAP2 Read/Write Address 34H/0DH

Value after reset: 00H

7	6	5	4	3	2	1	0
SA27	SA26	SA25	SA24	SA23	SA22	SA21	SA20

This register contains the second choice of the first byte address of received frame. For LAPD frame, SA27 - SA22 is the SAPI value, SA21 is C/R bit and SA20 is zero.

### 8.1.15 D\_ch TEI Address Mask D\_TAM Read/Write Address 38H/0EH

Value after reset: 00H

7	6	5	4	3	2	1	0
TAM7	TAM6	TAM5	TAM4	TAM3	TAM2	TAM1	TAM0

This register masks (disables) the second byte address comparison of the incoming frame. If the mask bit is "1" the corresponding bit comparisons with D\_TEI1, D\_TEI2 are disabled. Comparison with TEIG is always performed.

**Note :** For the LAPD frame, the least significant bit is the EA =1 bit.

### 8.1.16 D\_ch TEI1 Register D\_TEI1 Read/Write Address 3CH/0FH

Value after reset: 00H

7	6	5	4	3	2	1	0
TA17	TA16	TA15	TA14	TA13	TA12	TA11	TA10

#### TA17 - TA10

This register contains the first choice of the second byte address of received frame. For LAPD frame, TA17 - TA11 is the TEI value, TA10 is EA = 1.



## W6692A PCI ISDN S/T-Controller

### 8.1.17 D\_ch TEI2 Register D\_TEI2 Read/Write Address 40H/10H

Value after reset: 00H

7	6	5	4	3	2	1	0
TA27	TA26	TA25	TA24	TA23	TA22	TA21	TA20

#### TA27 - TA20

This register contains the second choice of the second byte address of received frame. For LAPD frame, TA27 - TA21 is the TEI value, TA20 is EA = 1.

### 8.1.18 D\_ch Receive Frame Byte Count High D\_RBCH Read Address 44H/11H

Value after reset: 40H

7	6	5	4	3	2	1	0
VN1	VN0	LOV	RBC12	RBC11	RBC10	RBC9	RBC8

#### VN1-0 Chip Version Number

This is the chip version number. It is read as 01B.

#### LOV Length Overflow

A "1" in this bit indicates  $\geq 8192$  bytes are received and the frame is not yet complete. This bit is valid only after an D\_RME interrupt and remains valid until the frame is acknowledge via the RACK command.

#### RBC12-8 Receive Byte Count

Four most significant bits of the total frame length. These bits are valid only after an D\_RME interrupt and remain valid until the frame is acknowledge via the RACK command.

### 8.1.19 D\_ch Receive Frame Byte Count Low D\_RBCL Read Address 48H/12H

Value after reset: 00H

7	6	5	4	3	2	1	0
RBC7	RBC6	RBC5	RBC4	RBC3	RBC2	RBC1	RBC0

#### RBC7-0 Receive Byte Count

Eight least significant bits of the total frame length. Bits RBC5-0 also indicate the length of the data currently available in D\_RFIFO. These bits are valid only after an D\_RME interrupt and remain valid until the frame is acknowledged via the RACK command.





**W6692A PCI ISDN S/T-Controller**  
**Address 4CH/13H**

**8.1.20 Timer 2****TIMR2****Write**

Value after reset : 00H

7	6	5	4	3	2	1	0
<b>TMD</b>	<b>TIDLE</b>	<b>TCN5</b>	<b>TCN4</b>	<b>TCN3</b>	<b>TCN2</b>	<b>TCN1</b>	<b>TCN0</b>

**TMD Timer 2 Mode**

0: One shot count down mode. The timer starts when it is written a non-zero count value and stops when it reaches zero.

1: Cyclic timer mode. The timer starts when it is written a non-zero count value and counts cyclically (periodically) with the count value.

In both cases, a maskable interrupt TIN2 is generated every time the timer reaches zero. When timer starts, pin TOUT2 changes to HIGH and toggles every half count time. Therefore, the period of TOUT2 equals count value.

In both cases, timer counts with the new value if it is written again before expiration.

The timer is stopped when it expires (TMD=0), or by writing zero count value (TMD=0 or 1).

**TIDLE TOUT2 Idle**

This bit defines value of TOUT2 pin when timer is off.

**TCN5-0 Timer 2 Count Value**

0: Timer is off.

1-63: Timer count value in unit of ms.

**8.1.21 Layer 1\_Redy Code****L1\_RC****Read/Write****Address 50H/14H**

Value after reset: 0CH

7	6	5	4	3	2	1	0
<b>0</b>	<b>0</b>	<b>0</b>	<b>0</b>	<b>RC3</b>	<b>RC2</b>	<b>RC1</b>	<b>RC0</b>

**RC3-0 Ready Code**

When GCI bus is being enabled, these four programmable bits are allowed to program different Layer 1\_Redy Code (AI: Activation Indication) by user. For example: Siemens PEB2091: AI=1100, Motorola MC145572: AI=1100.

**8.1.22 Control Register****CTL****Read/Write****Address 54H/15H**

Value after reset : 00H

7	6	5	4	3	2	1	0
<b>0</b>	<b>0</b>	<b>SRST</b>	<b>0</b>	<b>0</b>	<b>0</b>	<b>OPS1</b>	<b>OPS0</b>



## W6692A PCI ISDN S/T-Controller

### SRST Software Reset

When this bit is set to "1", a software reset signal is activated. The effects of this reset signal are equivalent to the hardware reset pin, except that it does not reset the PCI interface circuit.

This bit is not auto-clear, the software must write "0" to this bit to exit from the reset mode.

**Note:** When SRST = 1, the chip is in reset state. Read or write to any of the registers is inhibited at this time. The SRST bit is write-only.

### OPS1-0 Output Phase Delay Compensation Select1-0

These two bits select the output phase delay compensation.

OPS1	OPS0	Effect
0	0	No output phase delay compensation
0	1	Output phase delay compensation 260ns
1	0	Output phase delay compensation 520 ns
1	1	Output phase delay compensation 1040 ns

### 8.1.23 Command/Indication Receive Register CIR Read Address 58H/16H

Value after reset: 0FH

7	6	5	4	3	2	1	0
SCC	ICC			CODR3	CODR2	CODR1	CODR0

#### SCC S Channel Change

A change in the received 4-bit S channel has been detected. The new code can be read from the SQR register. This bit is cleared via a read of the SQR register.

#### ICC Indication Code Change

A change in the received indication code has been detected. The new code can be read from the CIR register. This bit is cleared by a read of the CIR register.

#### CODR3-0 Layer 1 Indication Code

Value of the received layer 1 indication code. Note these bits have a buffer size of two.

**Note :** If S/T layer 1 function is disabled and GCI slave mode is enabled (GMODE = 1 in GCR register), CIR register is used to receive layer 1 indication code from U transceiver. In this case, SCC bit is not used and the supported indication codes are :

Indication	Symbol	Code	Descriptions
Deactivation confirmation	DC	1111	Idle code on GCI interface
Power up indication	PU	0111	U transceiver power up

**W6692A PCI ISDN S/T-Controller**
**8.1.24 Command/Indication Transmit Register    CIX    Read/Write    Address 5CH/17H**

Value after reset: 0FH

7	6	5	4	3	2	1	0
				CODX3	CODX2	CODX1	CODX0

**CODX3-0    Layer 1 Command Code**

Value of the command code transmitted to layer 1.

A read to this register returns the previous written value.

**Note:** If S/T layer 1 function is disabled and GCI slave mode is enabled (GMODE = 1 in GCR register), CIX register is used to issue layer 1 command code to U transceiver. In this case, the supported command code is:

Command	Symbol	Code	Descriptions
Activate request command	AR	1000	Activate request command

**8.1.25 S/Q Channel Receive Register    SQR    Read    Address 60H/18H**

Value after reset: XXH

7	6	5	4	3	2	1	0
XIND1	XIND0	MSYN	SCIE	S1	S2	S3	S4

**XIND1    XINTIN1 Data**

This bit reflects the current level of XINTIN1 pin.

**XIND0    XINTIN0 Data**

This bit reflects the current level of XINTIN0 pin.

**MSYN    Multiframe Synchronization**

When this bit is "1", a multiframe synchronization is achieved, i.e the S/T receiver has synchronized to the received F<sub>A</sub> and M bit patterns.

**SCIE    S Channel Change Interrupt Enable**

This bit reflects the bit written in the SQX register.

**S1-4    Received S Bits**

These are the S bits received in NT to TE direction in frames 1, 6, 11 and 16. S1 is in frame 1, S2 is in frame 6 etc. This four bits are double buffered.



## W6692A PCI ISDN S/T-Controller

### 8.1.26 S/Q Channel Transmit Register      SQX      Read/Write      Address 64H/19H

Value after reset: 0FH

7	6	5	4	3	2	1	0
0	0	0	SCIE	Q1	Q2	Q3	Q4

#### SCIE      S Channel Change Interrupt Enable

This bit is used to enable/disable the generation of CIR:SCC status bit and interrupt.

0 : Status bit and interrupt are disabled.

1 : Status bit and interrupt are enabled.

#### Q1-4      Transmitted Q Bits

These are the transmitted Q channels in F<sub>A</sub> bit positions in frames 1, 6, 11 and 16. Q1 is in frame 1 and Q2 is in frame 6 etc.

A read to this register returns the previous written value.

### 8.1.27 Peripheral Control Register      PCTL      Read/Write      Address 68H/1AH

Value after reset: 00H

7	6	5	4	3	2	1	0
OE5	OE4	OE3	OE2	OE1	OE0	XMODE	PXC

#### OE5      Direction Control for IO10

Used when XMODE=0 only.

0: Pin IO10's output driver is disabled.

1: Pin IO10's output driver is enabled.

#### OE4      Direction Control for IO9-8

Used when XMODE=0 only.

0: Pin IO9-8's output drivers are disabled.

1: Pin IO9-8's output drivers are enabled.

#### OE3      Direction Control for IO7-6

Used when XMODE=0 only.

0: Pin IO7-6's output drivers are disabled.

1: Pin IO7-6's output drivers are enabled.

#### OE2      Direction Control for IO5-4

Used when XMODE=0 only.

0 : Pin IO5-4's output drivers are disabled.

1 : Pin IO5-4's output drivers are enabled.

**W6692A PCI ISDN S/T-Controller****OE1 Direction Control for IO3-2**

Used when XMODE=0 only.

0 : Pin IO3-2's output drivers are disabled.

1 : Pin IO3-2's output drivers are enabled.

**OE0 Direction Control for IO1-0**

Used when XMODE=0 only.

0 : Pin IO1-0's output drivers are disabled.

1 : Pin IO1-0's output drivers are enabled.

**XMODE Peripheral Bus Mode**

0: Simple programmable IO. This is the default state. XADDR register and XDATA register are used for data access.

1: 8-bit multiplexed microprocessor bus. Pins IO7-0 are used as XAD7-0, IO8 as XALE, IO9 as XRDB and IO10 as XWRB. XADDR register is used for peripheral address generation and XDATA register is used for peripheral data access.

**PXC PCM Cross-connect**

This bit determines whether or not the PCM ports are cross-connected with the B channel ports. The setting of PXC is independent of the BSW1-0 bits. See section 7.4 for details.

PXC	Connection
0	PCM1 ↔ B1, PCM2 ↔ B2
1	PCM1 ↔ B2, PCM2 ↔ B1

**8.1.28 Monitor Receive Channel 0****MO0R****Read****Address 6CH/1BH**

Value after reset: FFH

7	6	5	4	3	2	1	0

Contains the Monitor channel data received in GCI Monitor channel 0 according to the Monitor channel protocol.

**8.1.29 Monitor Transmit Channel 0****MO0X****Read/Write****Address 70H/1CH**

Value after reset: FFH

7	6	5	4	3	2	1	0

**W6692A PCI ISDN S/T-Controller**

Contains the Monitor channel data transmitted in GCI Monitor channel 0 according to the Monitor channel protocol.

**8.1.30 Monitor Channel 0 Interrupt Register      MO0I      Read\_clear      Address 74H/1DH**

Value after reset: 00H

7	6	5	4	3	2	1	0
				<b>MDR0</b>	<b>MER0</b>	<b>MDA0</b>	<b>MAB0</b>

**MDR0**      Monitor channel 0 Data Receive

**MER0**      Monitor channel    0 End of Reception

**MDA0**      Monitor channel    0 Data Acknowledged

                 The remote end has acknowledged the Monitor byte being transmitted.

**MAB0**      Monitor channel    0 Data Abort

**8.1.31 Monitor Channel 0 Control Register      MO0C      Read/Write      Address 78H/1EH**

Value after reset: 00H

7	6	5	4	3	2	1	0
<b>0</b>	<b>0</b>	<b>0</b>	<b>0</b>	<b>MRIE0</b>	<b>MRC0</b>	<b>MXIE0</b>	<b>MXC0</b>

**MRIE0      Monitor Channel 0 Receive Interrupt Enable**

Monitor channel interrupt status MDR0, MER0 generation is enabled (1) or masked (0).

**MRC0      MR Bit Control**

Determines the value of the MR bit:

0: MR bit always 1. In addition, the MDR0 interrupt is blocked, except for the first byte of a packet (if MRE=1).

1: MR internally controlled by the W6692A according to Monitor channel protocol. In addition, the MDR0 interrupt is enabled for all received bytes according to the Monitor channel protocol (if MRE=1).

**MXIE0      Monitor channel 0 Transmit Interrupt Enable**

Monitor interrupt status MDA0, MAB0 generation is enabled (1) or masked (0).

**MXC0      MX bit Control**

Determines the value of the MX bit:

0: MX always 1.

1: MX internally controlled by the W6692A according to Monitor channel protocol.

**8.1.32 GCI Mode Control/Status Register      GCR      Read/Write      Address 7CH/1FH**

**W6692A PCI ISDN S/T-Controller**

Value after reset: 00H

7	6	5	4	3	2	1	0
MAC0	MAC1	GACT	TLP	GRLP	SPU	PD	GMODE

**MAC0 Monitor Transmit Channel 0 Active (Read Only)**

Data transmission is in progress in GCI mode Monitor channel 0.

- 0: the previous transmission has been terminated. Before starting a transmission, the microprocessor should verify that the transmitter is inactive.
- 1: after having written data into the Monitor Transmit Channel 0 (MO0X) register, the microprocessor sets this bit to 1. This enables the MX bit to go active (0), indicating the presence of valid Monitor channel data (contents of MOX) in the correspond frame.

**MAC1 Monitor Transmit Channel 1 Active (Read Only)**

Data transmission is in progress in GCI mode Monitor channel 1.

- 0: the previous transmission has been terminated. Before starting a transmission, the microprocessor should verify that the transmitter is inactive.
- 1: after having written data into the Monitor Transmit Channel 1 (MO1X) register, the microprocessor sets this bit to 1. This enables the MX bit to go active (0), indicating the presence of valid Monitor channel data (contents of MOX) in the correspond frame.

**GACT GCI Switching Active**

Determines which CODEC interface is to be activated in B channle switching. Valid only in GCI master mode. In GCI slave mode, PCM ports are always enabled.

- 0: PCM ports are enabled
- 1: GCI bus is enabled.

**TLP Test Loop**

When this bit is set to 1 both the DU and DD lines are internally connected together. External input on DD is ignored. Valid in GCI slave mode.

**GRLP GCI Mode Remote Loop-back**

Setting this bit to 1 activates the remote loop-back function. The 2B+D channels data received from the GCI bus (DD) interface are looped to the transmitted channels (DU). Valid in GCI slave mode.

**SPU Software Power Up****PD Power Down**

SPU	PD	Description
0	1	After U transceiver power down, W6692A will receive the indication DC (Deactivation Confirmation) from GCI bus and then software has to set SPU → 0, PD → 1 to acknowledge U transceiver, by pulling DU pin to HIGH. W6692A remains normal operation.
1	0	Setting SPU → 1, PD → 0 will pull the GCI bus DU line to low. This will enforce connected layer 1 devices (U transceiver) to deliver GCI bus clocking.
0	0	After reception of the indication PU (Power Up indication) the reaction of the microprocessor should be: - To write an AR (Activate Request command) as C/I command code in the CIX register.

**W6692A PCI ISDN S/T-Controller**

		- To reset the SPU bit and wait for the following ICC (indication code change) interrupt.
1	1	Unused.

**GMODE      GCI Mode**

0: Layer 1 is S/T interface; GCI is in master mode. This is default setting.

1: Layer 1 is U interface; GCI is in slave mode.

**8.1.33 Peripheral Address Register****XADDR****Read/Write****Address F4H/3DH**

Value after reset: Undefined

The register content depends on PCTL:XMODE setting.

**XMODE = 0 : Simple IO mode, Valid in PCI or Intel/Motorola Bus mode**

7	6	5	4	3	2	1	0
IO7	IO6	IO5	IO4	IO3	IO2	IO1	IO0

**IO1-0      Read or Write Data of Pins IO1-0**

On read operation, these are the present values of pins IO1-0.

On write operation, the data are driven to pins IO1-0 only if PCTL:OE0=1.

**IO3-2      Read or Write Data of Pins IO3-2**

On read operation, these are the present values of pins IO3-2.

On write operation, the data are driven to pins IO3-2 only if PCTL:OE1=1.

**IO5-4      Read or Write Data of Pins IO5-4**

On read operation, these are the present values of pins IO5-4.

On write operation, the data are driven to pins IO5-4 only if PCTL:OE2=1.

**IO7-6      Read or Write Data of Pins IO7-6**

On read operation, these are the present values of pins IO7-6.

On write operation, the data are driven to pins IO7-6 only if PCTL:OE3=1.

**XMODE = 1: 8-bit multiplexed microprocessor mode, Valid in PCI Bus mode only**

7	6	5	4	3	2	1	0
XA7	XA6	XA5	XA4	XA3	XA2	XA1	XA0

**XA7-0      Peripheral Address**





### W6692A PCI ISDN S/T-Controller

To access peripheral device, first write the peripheral address in this register and then perform read or write at XDATA register. The address written in this register is output on XAD7-0 in address phase of data access and can be latched by XALE signal.

#### 8.1.34 Peripheral Data Register

XDATA

Read/Write

Address F8H/3EH

Value after reset: Undefined

The register content depends on PCTL:XMODE setting.

**XMODE = 0 : Simple IO mode, Valid in PCI or Intel/Motorola Bus mode**

7	6	5	4	3	2	1	0
					IO10	IO9	IO8

##### IO9-8 Read or Write Data of Pins IO9-8

Input data of pins IO9-8 if PCTL:OE4=0.

Output data of pins IO9-8 if PCTL:OE4=1.

##### IO10 Read or Write Data of Pins IO10

Input data of pins IO10 if PCTL:OE5=0.

Output data of pins IO10 if PCTL:OE5=1.

**XMODE = 1 : 8-bit multiplexed microprocessor mode, Valid in PCI Bus mode only**

7	6	5	4	3	2	1	0
XD7	XD6	XD5	XD4	XD3	XD2	XD1	XD0

##### XD7-0 Peripheral Data

During data phase of peripheral access, they are outputs to XAD7-0 if write, or inputs from XAD7-0 if read.

#### 8.1.35 Serial EEPROM Control Register

EPCTL

Read/Write

Address FCH/3FH

Value after reset : X0H

7	6	5	4	3	2	1	0
0	0	0	SDI	EN	SK	CS	SDO

##### SDI Input Data of EPSDI

When read, this bit returns the current data on pin EPSDI. Write operation is ignored.

**W6692A PCI ISDN S/T-Controller****EN      Enable Output**

0 : Disable outputs of bits 2-0 to pins.

1 : Enable outputs of bits 2-0 to pins.

**SK      Output Data of EPSK**

When enabled, this bit is output on pin EPSK.

**CS      Output Data of EPCS**

When enabled, this bit is output on pin EPCS.

**SDO      Output Data of EPSDO**

When enabled, this bit is output on pin EPSDO.

A read to bits 3-0 returns the previous written values.

**8.1.36 Monitor Receive Channel 1 Register****MO1R****Read    Address 6DH/40H**

Value after reset: FFH

7	6	5	4	3	2	1	0

Contains the Monitor channel data received in GCI Monitor channel 1 according to the Monitor channel protocol.

**8.1.37 Monitor Transmit Channel 1 Register****MO1X****Read/Write    Address 71H/41H**

Value after reset: FFH

7	6	5	4	3	2	1	0

Contains the Monitor channel data transmitted in GCI Monitor channel 1 according to the Monitor channel protocol.

**8.1.38 Monitor Channel 1 Interrupt Register****MO1I****Read\_clear****Address 75H/42H**

Value after reset: 00H

7	6	5	4	3	2	1	0
				<b>MDR1</b>	<b>MER1</b>	<b>MDA1</b>	<b>MAB1</b>

**MDR1**      Monitor channel 1 Data Receive

**W6692A PCI ISDN S/T-Controller**

**MER1** Monitor channel 1 End of Reception  
**MDA1** Monitor channel 1 Data Acknowledged  
 The remote end has acknowledged the Monitor byte being transmitted.  
**MAB1** Monitor channel 1 Data Abort

**8.1.39 Monitor Channel 1 Control Register MO1C Read/Write Address 79H/43H**

Value after reset: 00H

7	6	5	4	3	2	1	0
0	0	0	0	MRIE1	MRC1	MXIE1	MXC1

**MRIE1 Monitor Channel 1 Receive Interrupt Enable**  
 Monitor channel interrupt status MDR1, MER1 generation is enabled (1) or masked (0).

**MRC1 MR Bit Control**  
 Determines the value of the MR bit:  
 0: MR bit always 1. In addition, the MDR1 interrupt is blocked, except for the first byte of a packet (if MRE=1).  
 1: MR internally controlled by the W6692A according to Monitor channel protocol. In addition, the MDR1 interrupt is enabled for all received bytes according to the Monitor channel protocol (if MRE=1).

**MXIE1 Monitor channel 1 Transmit Interrupt Enable**  
 Monitor interrupt status MDA1, MAB1 generation is enabled (1) or masked (0).

**MXC1 MX bit Control**  
 Determines the value of the MX bit:  
 0: MX always 1.  
 1: MX internally controlled by the W6692A according to Monitor channel protocol.

**8.1.40 GCI IC1 Receive Register IC1R Read Address 6EH/44H**

Value after reset: Undefined

7	6	5	4	3	2	1	0

**Bit 7-0**  
 Receive data of GCI IC1 channel.

**8.1.41 GCI IC1 Transmit Register IC1X Read/Write Address 72H/45H**

Value after reset: FFH

7	6	5	4	3	2	1	0

**W6692A PCI ISDN S/T-Controller****Bit 7-0**

Transmit data of GCI IC1 channel. A read to this register returns the previously written value.

**8.1.42 GCI IC2 Receive Register****IC2R****Read****Address 6FH/46H**

Value after reset: Undefined

7	6	5	4	3	2	1	0

**Bit 7-0**

Receive data of GCI IC2 channel.

**8.1.43 GCI IC2 Transmit Register****IC2X****Read/Write****Address 73H/47H**

Value after reset: FFH

7	6	5	4	3	2	1	0

**Bit 7-0**

Transmit data of GCI IC2 channel. A read to this register returns the previously written value.

**8.1.44 GCI CI1 Indication Register****CI1R****Read****Address 7DH/48H**

Value after reset : Undefined

7	6	5	4	3	2	1	0
		CI1R_6	CI1R_5	CI1R_4	CI1R_3	CI1R_2	CI1R_1

**CI1R\_6-1**

Input data of GCI CI1 channel.

Example application is data of ARCOFI's Peripheral Control Interface input pins.

**8.1.45 GCI CI1 Command Register****CI1X****Read/Write****Address****7EH/49H**

Value after reset: 3FH

7	6	5	4	3	2	1	0
0	0	CI1X_6	CI1X_5	CI1X_4	CI1X_3	CI1X_2	CI1X_1



## W6692A PCI ISDN S/T-Controller

### CIHX6\_1

Transmitted data of GCI CI1 channel. A read to these bits returns the previously written value.

Example application is data of ARCOFI's Peripheral Control Interface output pins.

### 8.1.46 GCI Extended Interrupt Register GCI\_EXIR Read\_clear Address 76H/4AH

Value after reset : 00H

7	6	5	4	3	2	1	0
0	0	0	MO1C	MO0C	IC1	IC2	CI1

#### MO1C Monitor Channel 1 Status Change

A change in the Monitor Channel 1 Interrupt register ( MO1I ) has occurred. A new Monitor channel byte is stored in the MO1R register.

#### MO0C Monitor Channel 0 Status Change

A change in the Monitor Channel 0 Interrupt register (MO0I) has occurred. A new Monitor channel byte is stored in the MO0R register.

#### IC1 IC1 Synchronous Transfer Interrupt

When enabled, an interrupt is generated at end of GCI IC1 time slot every GCI frame (125  $\mu$ s).

#### IC2 IC2 Synchronous Transfer Interrupt

When enabled, an interrupt is generated at end of GCI IC2 time slot every GCI frame (125  $\mu$ s).

#### CI1 GCI CI1 Synchronous Transfer Interrupt

When enabled, an interrupt is generated when there is a change in the received CIR1\_6-1 code without double last look criterion.

### 8.1.47 GCI Extended Interrupt Mask Register GCI\_EXIM Read/Write Address 7AH/4BH

Value after reset: F7H

7	6	5	4	3	2	1	0
1	1	1	MO1C	0	IC1	IC2	CI1

Bits 7-5 are fixed at "1" and bit 3 is fixed at '0'. This means MO0C interrupt cannot be masked. The interrupt is disabled when the bit is set.

## 8.2 B1 HDLC controller

### TABLE 8.3 REGISTER ADDRESS MAP: B1 CHANNEL HDLC

**W6692A PCI ISDN S/T-Controller**

Section	Offset	Access	Register Name	Description
8.2.1	80/20	R	B1_RFIFO	B1 channel receive FIFO
8.2.2	84/21	W	B1_XFIFO	B1 channel transmit FIFO
8.2.3	88/22	R/W	B1_CMDR	B1 channel command register
8.2.4	8C/23	R/W	B1_MODE	B1 channel mode control
8.2.5	90/24	R_clear	B1_EXIR	B1 channel extended interrupt
8.2.6	94/25	R/W	B1_EXIM	B1 channel extended interrupt mask
8.2.7	98/26	R	B1_STAR	B1 channel status register
8.2.8	9C/27	R/W	B1_ADM1	B1 channel address mask 1
8.2.9	A0/28	R/W	B1_ADM2	B1 channel address mask 2
8.2.10	A4/29	R/W	B1_ADR1	B1 channel address 1
8.2.11	A8/2A	R/W	B1_ADR2	B1 channel address 2
8.2.12	AC/2B	R	B1_RBCL	B1 channel receive frame byte count low
8.2.13	B0/2C	R	B1_RBCH	B1 channel receive frame byte count high
8.2.14	B4/2D	R/W	B1_IDLE	B1 channel transmit idle pattern

**TABLE 8.4 REGISTER SUMMARY: B1 CHANNEL HDLC**

Offset	R/W	Name	7	6	5	4	3	2	1	0
80/20	R	B1_RFIFO								
84/21	W	B1_XFIFO								
88/22	R/W	B1_CMDR	RACK	RRST	RACT	XACTB	B1_128K	XMS	XME	XRST
8C/23	R/W	B1_MODE	MMS	ITF	EPCM	B1_SW1	B1_SW0	SW56	FTS1	FTS0
90/24	R_clr	B1_EXIR		RMR	RME	RDOV			XFR	XDUN
94/25	R/W	B1_EXIM		RMR	RME	RDOV			XFR	XDUN
98/26	R	B1_STAR		RDOV	CRCE	RMB		XDOW		XBZ
9C/27	R/W	B1_ADM1	MA17	MA16	MA15	MA14	MA13	MA12	MA11	MA10
A0/28	R/W	B1_ADM2	MA27	MA26	MA25	MA24	MA23	MA22	MA21	MA20

**W6692A PCI ISDN S/T-Controller**

A4/29 R/W B1_ADR1	RA17	RA16	RA15	RA14	RA13	RA12	RA11	RA10
A8/2A R/W B1_ADR2	RA27	RA26	RA25	RA24	RA23	RA22	RA21	RA20
AC/2B R B1_RBCL	RBC7	RBC6	RBC5	RBC4	RBC3	RBC2	RBC1	RBC0
B0/2C R B1_RBCH			LOV	RBC12	RBC11	RBC10	RBC9	RBC8
B4/2D R/W B1_IDLE	IDLE7	IDLE6	IDLE5	IDLE4	IDLE3	IDLE2	IDLE1	IDLE0

**8.2.1 B1\_ch receive FIFO B1\_RFIFO Read Address 80H/20H**

The B1\_RFIFO is a 128-byte depth FIFO memory with programmable threshold. The threshold value determines when to generate an interrupt.

When more than a threshold length of data has been received, a RMR interrupt is generated. After an RMR interrupt, 64 or 96 bytes can be read out, depending on the threshold setting.

In transparent mode, when the end of frame has been received, a RME interrupt is generated. After an RME interrupt, the number of bytes available is less than or equal to the threshold value.

**8.2.2 B1\_ch transmit FIFO B1\_XFIFO Write Address 84H/21H**

The B1\_XFIFO is a 128-byte depth FIFO with programmable threshold value. The threshold setting is the same as B1\_RFIFO.

When the number of empty locations is equal to or greater than the threshold value, a XFR interrupt is generated. After a XFR interrupt, up to 64 or 96 bytes of data can be written into this FIFO for transmission.

**8.2.3 B1\_ch command register B1\_CMDR Read/Write Address 88H/22H**

Value after reset: 00H

7	6	5	4	3	2	1	0
RACK	RRST	RACT	XACTB	B1_128 K	XMS	XME	XRST

**RACK Receive Message Acknowledge**

After a RMR or RME interrupt, the microprocessor reads out the data in B1\_RFIFO, it then sets this bit to explicitly acknowledge the interrupt.

This bit is write only. It's auto-clear.

**RRST Receiver Reset**

Setting this bit resets the B1\_ch HDLC receiver.

This bit is write-only. It's auto-clear.

**RACT Receiver Active**

"1": transmitter is active, 64 kHz clock is provided.

"0": transmitter is inactive, clock is LOW to save power.



## W6692A PCI ISDN S/T-Controller

This bit is read/write. Read operation returns the previously written value.

### XACTB Transmitter Active

"0": transmitter is active, 64 kHz clock is provided.

"1": transmitter is inactive, clock is LOW to save power.

This bit is read/write. Read operation returns the previously written value.

### B1\_128K 128K Mode

"1": Both B1 and B2 channels in layer 1 are combined into single layer 2 channel. The layer 2 B1 channel can operate in transparent mode or extended transparent mode and layer 2 B2 channel is not used.

"0": Both B1 and B2 channels in layer 1 are not combined.

This bit is read/write. Read operation returns the previously written value.

### XMS Transmit Message Start/Continue

In transparent mode, setting this bit initiates the transparent transmission of B1\_XFIFO data. The opening flag is automatically added to the message by the B1\_ch HDLC controller. Zero bit insertion is performed on the data. This bit is also used in subsequent transmission of the frame.

In extended transparent mode, setting this bit activates the transmission of B1\_XFIFO data. No flag, CRC or zero bit insertion is added on the data.

This bit is write-only. It's auto-clear.

### XME Transmit Message End

In transparent mode, setting this bit indicates the end of the whole frame transmission. The B1\_ch HDLC controller transmits the data in FIFO and automatically appends the CRC and the closing flag sequence in transparent mode.

In extended transparent mode, setting this bit stops the B1\_XFIFO data transmission.

This bit is write-only. It's auto-clear.

### XRST Transmitter Reset

Setting this bit resets the B1\_ch HDLC transmitter and clears the B1\_XFIFO. The transmitter will send inter frame time fill pattern on B channel in transparent mode, or idle pattern in extended transparent mode. This command also results in a transmit FIFO ready condition.

This bit is write only. It's auto-clear.

## 8.2.4 B1\_ch Mode Register B1\_MODE Read/Write Address 8CH/23H

Value after reset: 00H

7	6	5	4	3	2	1	0
MMS	ITF	EPCM	B1_SW1	B1_SW0	SW56	FTS1	FTS0

### MMS Message Mode Setting

Determines the message transfer modes of the B1\_ch HDLC controller:





## W6692A PCI ISDN S/T-Controller

0: Transparent mode. In receive direction, address comparison is performed on each frame. The frames with matched address are stored in B1\_RFIFO. Flag deletion, CRC check and zero bit deletion are performed. In transmit direction, the data is transmitted with flag insertion, zero bit insertion and CRC generation.

1: Extended transparent mode. In receive direction, all data are received and stored in the B1\_RFIFO. In transmit direction, all data in the B1\_XFIFO are transmitted without alteration.

### ITF Inter-frame Time Fill

Defines the inter-frame time fill pattern in transparent mode.

0 : Mark. The binary value "1" is transmitted.

1 : Flag. This is a sequence of "01111110".

### EPCM Enable PCM Transmit/Receive

0 : Disable data transmit/ receive to/from PCM port. The frame synchronization clock PFCK1 is held LOW.

1 : Enable data transmit/ receive to/from PCM port. The frame synchronization clock PFCK1 is active.

### B1\_SW1-0 B Channel Switching Select

These two bits, along with PXC bit in PCTL register, determine the connection in B1 channel. See section 7.4 for details.

**Note:** The connection with micro-controller is through HDLC controller. When HDLC connects with layer 1, either transparent or extended transparent mode can be used. When HDLC connects with PCM port/GCI bus, only extended transparent mode can be used and the EPCM bit must be set to enable PCM function.

### SW56 Switch 56 Traffic

0: The data rate in B1 channel is 64 kbps.

1: The data rate in B1 channel is 56 kbps. The most significant bit in each octet is fixed at "1".

**Note:** In 56 kbps mode, only transparent mode can be used.

### FTS1-0 FIFO Threshold Select

These two bits determine the B1 channel receive and transmit FIFO's threshold setting. An interrupt is generated when the number of received data or the number of vacancies in XFIFO reaches the threshold value.

FTS1	FTS0	Threshold (byte)
0	0	64
0	1	Reserved
1	0	96
1	1	Not allowed

## 8.2.5 B1\_ch Extended Interrupt Register B1\_EXIR Read\_clear Address 90H/24H

Value after reset: 00H

7	6	5	4	3	2	1	0
	RMR	RME	RDOV			XFR	XDUN



## W6692A PCI ISDN S/T-Controller

### RMR Receive Message Ready

At least a threshold length of data has been stored in the B1\_RFIFO.

### RME Receive Message End

Used in transparent mode only. The last block of a frame has been received. The frame length can be found in B1\_RBCH + B1\_RBCL registers. The number of data available in the B1\_RFIFO equals frame length modulus threshold. The result of CRC check is indicated by B1\_STAR:CRCE bit.

When the number of last block of a frame equals the threshold, only RME interrupt is generated.

### RDOV Receive Data Overflow

Data overflow occurs in the receive FIFO. The incoming data will overwrite the data in the receive FIFO.

### XFR Transmit FIFO Ready

This interrupt indicates that up to a threshold length of data can be written into the B1\_XFIFO.

### XDUN Transmit Data Underrun

This interrupt occurs when the B1\_XFIFO has run out of data. In this case, the W6692A will automatically reset the transmitter and send the inter frame time fill pattern on B channel. The software must wait until transmit FIFO ready condition (via XFR interrupt), re-write data, and issue XMS command to re-transmit the data.

## 8.2.6 B1\_ch Extended Interrupt Mask Register B1\_EXIM Read/Write Address 94H/25H

Value after reset: FFH

7	6	5	4	3	2	1	0
	RMR	RME	RDOV			XFR	XDUN

Setting the bit to "1" masks the corresponding interrupt source in B1\_EXIR register. Masked interrupt status bits are read as zero when B1\_EXIR register is read. They are internally stored and pending until the mask bits are zero.

All the interrupts in B1\_EXIR will be masked if the IMASK : B1\_EXI bit is set to "1".

## 8.2.7 B1\_ch Status Register B1\_STAR Read Address 98H/26H

Value after reset: 20H

7	6	5	4	3	2	1	0
	RDOV	CRCE	RMB		XDOW		XBZ

### RDOV Receive Data Overflow

A "1" indicates that the D\_RFIFO is overflow. The incoming data will overwrite data in the receive FIFO. The overflow condition will set both the status and interrupt bits. It is recommended that software must read the RDOV bit after reading data



## W6692A PCI ISDN S/T-Controller

from receive FIFO at RMR or RME interrupt. The software must abort the data and issue a RRST command to reset the receiver if RDOV=1.

### CRCE      CRC Error

Used in transparent mode only. This bit indicates the result of frame CRC check:

0 : CRC correct

1 : CRC incorrect

### RMB      Receive Message Aborted

Used in transparent mode only. A "1" means that a sequence of  $\geq$ seven 1's was received and the frame is aborted by the B1\_HDLC controller. Software must issue RRST command to reset the receiver.

**Note :** Bit CRCE is valid only after a RME interrupt and remains valid until the frame is acknowledged via RACK command. RMB must be polled after a RMR/RME interrupt.

### XDOW      Transmit Data Overwritten

At least one byte of data has been overwritten in the B1\_XFIFO. This bit is cleared only by XRST command.

### XBZ      Transmitter Busy

The B1\_HDLC transmitter is busy when XBZ is read as "1". This bit may be polled. The XBZ bit is active when an XMS command was issued and the message has not been completely transmitted.

## 8.2.8 B1\_ch Address Mask Register 1      B1\_ADM1      Read/Write      Address 9CH/27H

Value after reset: 00H

7	6	5	4	3	2	1	0
MA17	MA16	MA15	MA14	MA13	MA12	MA11	MA10

### MA17-10      Address Mask Bits

Used in transparent mode only. These bits mask the first byte address comparisons. If the mask bit is "1", the corresponding bit comparison with B1\_ADR1 is disabled.

0: Unmask comparison

1: Mask comparison

## 8.2.9 B1\_ch Address Mask Register 2      B1\_ADM2      Read/Write      Address A0H/28H

Value after reset: 00H

7	6	5	4	3	2	1	0
MA27	MA26	MA25	MA24	MA23	MA22	MA21	MA20

### MA27-20      Address Mask Bits



### W6692A PCI ISDN S/T-Controller

Used in transparent mode only. These bits mask the second byte address comparisons. If the mask bit is "1", the corresponding bit comparison with B1\_ADR2 is disabled.

0: Unmask comparison

1: Mask comparison

#### 8.2.10 B1\_ch Address Register 1    B1\_ADR1    Read/Write    Address A4H/29H

Value after reset: 00H

7	6	5	4	3	2	1	0
RA17	RA16	RA15	RA14	RA13	RA12	RA11	RA10

##### RA17-10    Address Bits

Used in transparent mode only. These bits are used for the first byte address comparisons.

#### 8.2.11 B1\_ch Address Register 2    B1\_ADR2    Read/Write    Address A8H/2AH

Value after reset: 00H

7	6	5	4	3	2	1	0
RA27	RA26	RA25	RA24	RA23	RA22	RA21	RA20

##### RA27-20    Address Bits

Used in transparent mode only. These bits are used for the second byte address comparisons.

#### 8.2.12 B1\_ch Receive Frame Byte Count Low    B1\_RBCL    Read    Address ACH/2BH

Value after reset: 00H

7	6	5	4	3	2	1	0
RBC7	RBC6	RBC5	RBC4	RBC3	RBC2	RBC1	RBC0

##### RBC7-0    Receive Byte Count

Used in transparent mode only. Eight least significant bits of the total number of bytes are in a received frame. These bits are valid only after a RME interrupt and remain valid until the frame is acknowledge via the RACK bit.

#### 8.2.13 B1\_ch Receive Frame Byte Count High    B1\_RBCH    Read    Address B0H/2CH

Value after reset: 00H

7	6	5	4	3	2	1	0
---	---	---	---	---	---	---	---

**W6692A PCI ISDN S/T-Controller**

		LOV	RBC12	RBC11	RBC10	RBC9	RBC8
--	--	-----	-------	-------	-------	------	------

**LOV Message Length Overflow**

Used in transparent mode only. A "1" in this bit indicates a received message  $\geq 8192$  bytes. This bit is valid only after RME interrupt and is cleared by the RACK command.

**RBC12-8 Receive Byte Count**

Used in transparent mode only. Five most significant bits of the total number of bytes are in a received frame. These bits are valid only after a RME interrupt and remain valid until the frame is acknowledge via the RACK bit.

**Note:** The frame length equals RBC12-0. This length is between 1 and 8191. After a RME interrupt, the number of data available in B1\_RFIFO is frame length modulus threshold.

Remainder = RBC12-0 MOD threshold

No of available data = remainder if remainder  $\neq 0$  or

No of available data = threshold if remainder = 0

The remainder equals RBC5-0 if threshold is 64.

**8.2.14 B1\_ch Transmit Idle Pattern B1\_IDLE Read/Write Address B4H/2DH**

Value after reset: FFH

7	6	5	4	3	2	1	0
IDLE7	IDLE6	IDLE5	IDLE4	IDLE3	IDLE2	IDLE1	IDLE0

**IDLE7-0**

This pattern is transmitted when the transmitter is active and transmit FIFO is empty. Valid in extended transparent mode only.

**8.3 B2 HDLC controller****TABLE 8.5 REGISTER ADDRESS MAP: B2 CHANNEL HDLC**

Offset	Access	Register Name	Description
C0/30	R	B2_RFIFO	B2 channel receive FIFO
C4/31	W	B2_XFIFO	B2 channel transmit FIFO
C8/32	R/W	B2_CMDR	B2 channel command register
CC/33	R/W	B2_MODE	B2 channel mode control
D0/34	R_clear	B2_EXIR	B2 channel extended interrupt



### W6692A PCI ISDN S/T-Controller

D4/35	R/W	B2_EXIM	B2 channel extended interrupt mask
D8/36	R	B2_STAR	B2 channel status register
DC/37	R/W	B2_ADM1	B2 channel address mask 1
E0/38	R/W	B2_ADM2	B2 channel address mask 2
E4/39	R/W	B2_ADR1	B2 channel address 1
E8/3A	R/W	B2_ADR2	B2 channel address 2
EC/3B	R	B2_RBCL	B2 channel receive frame byte count low
F0/3C	R	B2_RBCH	B2 channel receive frame byte count high
B8/2E	R/W	B2_IDLE	B2 channel transmit idle pattern

**TABLE 8.6 REGISTER SUMMARY: B2 CHANNEL HDLC**

Offset	R/W	Name	7	6	5	4	3	2	1	0
C0/30	R	B2_RFIFO								
C4/31	W	B2_XFIFO								
C8/32	R/W	B2_CMDR	RACK	RRST	RACT	XACTB		XMS	XME	XRST
CC/33	R/W	B2_MODE	MMS	ITF	EPCM	B2_SW1	B2_SW0	SW56	FTS1	FTS0
D0/34	R_clr	B2_EXIR		RMR	RME	RDOV			XFR	XDUN
D4/35	R/W	B2_EXIM		RMR	RME	RDOV			XFR	XDUN
D8/36	R	B2_STAR		RDOV	CRCE	RMB		XDOW		XBZ
DC/37	R/W	B2_ADM1	MA17	MA16	MA15	MA14	MA13	MA12	MA11	MA10
E0/38	R/W	B2_ADM2	MA27	MA26	MA25	MA24	MA23	MA22	MA21	MA20
E4/39	R/W	B2_ADR1	RA17	RA16	RA15	RA14	RA13	RA12	RA11	RA10
E8/3A	R/W	B2_ADR2	RA27	RA26	RA25	RA24	RA23	RA22	RA21	RA20
EC/3B	R	B2_RBCL	RBC7	RBC6	RBC5	RBC4	RBC3	RBC2	RBC1	RBC0
F0/3C	R	B2_RBCH			LOV	RBC12	RBC11	RBC10	RBC9	RBC8
B8/2E	R/W	B2_IDLE	IDLE7	IDLE6	IDLE5	IDLE4	IDLE3	IDLE2	IDLE1	IDLE0

The B2 channel HDLC register's definitions and functions are the same as those of B1 channel HDLC. Please refer to section 8.2 for a detailed description.

## 8.4 PCI Configuration Register

W6692A provides PCI interface for PCI-based system and only supports slave mode. There are two optional Base Address Registers (Memory or I/O) for host access to W6692A internal registers.

Reads to reserved or unimplemented registers return data value of 0. Write to these registers are completed normally and the data are discarded.



### W6692A PCI ISDN S/T-Controller

After power on reset, W6692A automatically reads the configuration data from serial EEPROM interface. The first word read is Vendor ID. If Vendor ID = FFFF<sub>H</sub>, W6692A assumes EEPROM is empty and will use built-in default configuration data, otherwise, configuration data from EEPROM is used. Please refer to Section 7.9.1 for serial EEPROM data format.

**TABLE 8.7 PCI CONFIGURATION SPACE**

Address\Bit	31 24	23 16	15 8	7 0
00 <sub>H</sub>	Device ID		Vendor ID	
04 <sub>H</sub>	Status (Bit 4 = 1)		Command	
08 <sub>H</sub>	Class Code			Revision ID
0C <sub>H</sub>	--	Header Type	--	
10 <sub>H</sub>	Base Address Register 0			
14 <sub>H</sub>	Base Address Register 1			
18 <sub>H</sub> - 28 <sub>H</sub>	Not implemented. Read as 0.			
2C <sub>H</sub>	Subsystem ID		Subsystem Vendor ID	
30 <sub>H</sub>	Not implemented. Read as 0.			
34 <sub>H</sub>	Not implemented. Read as 0.			Cap_Ptr
38 <sub>H</sub>	Not implemented. Read as 0.			
3C <sub>H</sub>	--	--	Interrupt Pin	Interrupt Line
40 <sub>H</sub>	PMC		Next Item Ptr	Cap_ID
44 <sub>H</sub>	Data	PMCSR_BSE	PMCSR	

#### 8.4.1 Device/Vendor ID Register

Read

Address 00<sub>H</sub>

PCI Configuration Address: 00<sub>H</sub>

Default: 6692 1050<sub>H</sub>

31	30	29	28	27	26	25	24	23	22	21	20	19	18	17	16
Device ID															
15	14	13	12	11	10	9	8	7	6	5	4	3	2	1	0
Vendor ID															

##### Bits 31-16 Device ID

Device ID is loaded from EEPROM after power on reset, if EEPROM is not empty.

Device ID is Winbond's device ID: 6692<sub>H</sub>, if EEPROM is empty.

##### Bits 15-0 Vendor ID

Vendor ID is allocated by the PCI SIG to ensure uniqueness. The value is loaded from EEPROM after power-on reset, if EEPROM is not empty.

**W6692A PCI ISDN S/T-Controller**

Vendor ID is Winbond's vendor ID: 1050<sub>H</sub>, if EEPROM is empty.

**8.4.2 Status/Command Register****Read/Write****Address 04<sub>H</sub>**

PCI Configuration Address: 04<sub>H</sub>

Default: 0210 0000<sub>H</sub>

31	30	29	28	27	26	25	24	23	22	21	20	19	18	17	16
DPE	--	--	--	STA	DEVSEL	--	FBT	UDF	66M	CAP	--				

15	14	13	12	11	10	9	8	7	6	5	4	3	2	1	0
--						--	--	--	PEE	--				MAE	IOAE

Bits 31-16 are Status register and bits 15-0 are Command register. Reads to Status register behave normally. Bits in Status register are cleared if the corresponding write data bits are '1' in a write operation.

Bits 15-0 are Command register. When 00<sub>H</sub> is written to this register, the device is logically disconnected from the PCI bus for all accesses except configuration accesses. The power up value of Command register is 00<sub>H</sub>.

**Bit 31 DPE Detected Parity Error R/W\_clr**

1 = A parity error is detected.

0 = No parity error is detected.

**Bit 30 SSE Signaled System Error**

Not implemented. Read as 0.

**Bits 29-28 Master Aborted, Target Aborted**

Not implemented. Read as 0.

**Bit 27 STA Signaled Target Abort R/W\_clr**

1 = Target Abort is signaled.

0 = Target Abort is not signaled.

**Bits 26-25 DEVSEL Timing Read\_only**

01 = Medium DEVSEL# timing.

**Bits 24 PERR# Asserted**

Not implemented. Read as 0.

**Bit 23 FBT Fast Back-to-back Transaction Read\_only**

0 = Unable to accept fast back-to-back transaction.

**Bit 22 UDF User Definable Features Read\_only**

0 = Unable to support User Definable Features.



**W6692A PCI ISDN S/T-Controller****Bit 21    66M    66 MHz Function    Read\_only**

0 = Support 33 MHz only.

**Bit 20    CAP    Capability    Read\_only**

1 = Power management capability is supported.

**Bits 19-16    Reserved    Read as 0****Bits 15-10    Reserved    Read as 0****Bits 9    Fast Back-to-back**

Not implemented. Read as 0.

**Bit 8    SEE    SERR# Driver Enable**

Not implemented. Read as 0.

**Bits 7    Address/data Stepping**

Not implemented. Read as 0

**Bit 6    PEE    Parity Error Response Enable    R/W**

1 = Enable parity error response

0 = Disable parity error response

**Bits 5-2    VGA Palette, Memory Write and Invalidate, Special Cycle**

Not implemented. Read as 0.

**Bit 1    MAE    Memory Access Enable    R/W**

1 = Enable memory access response

0 = Disable memory access response

**Bit 0    IOAE    I/O Access Enable    R/W**

1 = Enable I/O access response

0 = Disable I/O access response

**8.4.3 Class Code/Revision ID Register****Read****Address 08<sub>H</sub>**PCI Configuration Address: 08<sub>H</sub>Default: 0204 0000<sub>H</sub>

31	30	29	28	27	26	25	24	23	22	21	20	19	18	17	16
Base Class Code								Sub-Class Code							
15	14	13	12	11	10	9	8	7	6	5	4	3	2	1	0
Programming Interface								Revision ID							

**Bits 31-8    Class Code    Read\_only**



### W6692A PCI ISDN S/T-Controller

This value is loaded from EEPROM after power-on reset, if EEPROM is not empty.

The default value is 020400<sub>H</sub> to specify that the W6692A is an ISDN network communication device, if EEPROM is empty.

#### Bits 7-0 Revision ID Read\_only

This value is assigned by the ISDN system manufacturer and identifies the revision number of the system.

This value is loaded from EEPROM after power on reset, if EEPROM is not empty.

The default value is 00<sub>H</sub>, if EEPROM is empty.

#### 8.4.4 Header Type/Latency Timer Register

Read

Address 0C<sub>H</sub>

PCI Configuration Address: 0C<sub>H</sub>

Default: 0000 0000<sub>H</sub>

31	30	29	28	27	26	25	24	23	22	21	20	19	18	17	16
BIST								Header Type							
15	14	13	12	11	10	9	8	7	6	5	4	3	2	1	0
Latency Timer								Cache Line Size							

#### Bits 31-24 BIST Built-in Self Test Read\_only

This register is always read as 0. It means that W6692A does not support BIST function.

#### Bits 23-16 Header Type Read\_only

The value of this register is 00<sub>H</sub>. This means a single function device, with header type 00<sub>H</sub>.

#### Bits 15-8 Latency Timer Read\_only

This register is not implemented and is read as 0.

#### Bits 7-0 Cache Line Size Read\_only

This register is not implemented and is read as 0.

#### 8.4.5 Base Address Register 0

Read/Write

Address 10<sub>H</sub>

Depending on EEPROM status and MEN, IEN bits in EEPROM, there are different implementations:

MEN	IEN	Location 10H	Location 14H	PRE used
1	1	Memory Base Address Reg.	IO Base Address Reg.	Yes
1	0	Memory Base Address Reg.	Not Implemented	Yes
0	1	IO Base Address Reg.	Not Implemented	No
0	0	Not Implemented	Not Implemented	No
EEPROM empty		Memory Base Address Reg.	IO Base Address Reg.	PRE=0

If EEPROM is empty, the power on reset value at 10<sub>H</sub> = 0000 0000<sub>H</sub>, and the power on reset value at 14<sub>H</sub> = 0000 0001<sub>H</sub>

Memory Base Address Register:

**W6692A PCI ISDN S/T-Controller**

31	30	29	28	27	26	25	24	23	22	21	20	19	18	17	16
Memory Base Address															

15	14	13	12	11	10	9	8	7	6	5	4	3	2	1	0
Memory Base Address				Hardwired to 0								PRE	Type	0	

This register can be used to relocate memory address space to any location that is aligned to 4K bytes for mapping W6692A's internal registers.

**Bits 31-12 Memory Base Address R/W**

These bits are read/write and are used to relocate the memory address space at 4K byte boundary.

**Bits 11-4 Read\_only**

These bits are read\_only and are hardwired to 0.

**Bit 3 Prefetchable Read\_only**

This bit is hardwired to 0 if EEPROM is empty. Otherwise, it is loaded from EEPROM.

**Bits 2-1 Type Read\_only**

These two bits are hardwired to 00, indicating the memory range can locate anywhere in 32 bit address space.

**Bit 0 Memory Space Indicator Read\_only**

This bit is hardwired to 0, indicating a memory space is allocated.

IO Base Address Register:

31	30	29	28	27	26	25	24	23	22	21	20	19	18	17	16
I/O Base Address															

15	14	13	12	11	10	9	8	7	6	5	4	3	2	1	0
I/O Base Address								Hardwired to 0				0		1	

This register can be used to relocate I/O address space to any location that is aligned to 256 bytes for mapping W6692A's internal registers.

**Bits 31-8 IO Base Address R/W**

These bits are read/write and are used to relocate the IO address space at 256 byte boundary.

**Bits 7-2 Read\_only**

These bits are read\_only and are hardwired to 0.

**Bit 1 Reserved Read\_only**

This bit is reserved and is hardwired to 0.

**Bit 0 IO Space Indicator Read\_only**

This bit is hardwired to 1, indicating a I/O space is allocated.



## W6692A PCI ISDN S/T-Controller

### 8.4.6 Base Address Register 1

Read/Write

Address 14<sub>H</sub>

See the above section.

### 8.4.7 Subsystem/Subsystem Vendor ID Register

Read

Address 2C<sub>H</sub>

PCI Configuration Address: 2C<sub>H</sub>

Default: FFFF FFFF<sub>H</sub>

31	30	29	28	27	26	25	24	23	22	21	20	19	18	17	16
Subsystem ID															

15	14	13	12	11	10	9	8	7	6	5	4	3	2	1	0
Subsystem Vendor ID															

#### Bits 31-16 Subsystem ID Read\_only

Assigned by card vendor. Subsystem ID is loaded from EEPROM after power on reset, if EEPROM is not empty.

The default value is FFFF<sub>H</sub>, if EEPROM is empty.

#### Bits 15-0 Subsystem Vendor ID Read\_only

Subsystem Vendor ID is assigned by the PCI SIG to ensure uniqueness. The value is loaded from EEPROM after power on reset, if EEPROM is not empty.

The default value is FFFF<sub>H</sub>, if EEPROM is empty.

### 8.4.8 Interrupt Line Register

Read/Write

Address 3C<sub>H</sub>

PCI Configuration Address: 3C<sub>H</sub>

Default: 0000 0100<sub>H</sub>

31	30	29	28	27	26	25	24	23	22	21	20	19	18	17	16
Max_Latency Timer								Min_GNT Timer							

15	14	13	12	11	10	9	8	7	6	5	4	3	2	1	0
Interrupt Pin								Interrupt Line							

#### Bits 31-24 Max\_Latency Timer Read\_only

This register is hardwired to 0, indicating no major requirements for the settings of Latency Timers.

#### Bits 23-16 Min\_GNT Timer Read\_only

This register is hardwired to 0.

#### Bits 15-8 Interrupt Pin Read\_only

This register is hardwired to 01<sub>H</sub> to specify that INTA# is the interrupt pin used.

**W6692A PCI ISDN S/T-Controller****Bits 7-0 Interrupt Line R/W**

This 8-bit register is used to communicate interrupt line routing information. BIOS or OS software must write the routing information into this register as it initializes and configures the system.

**8.4.9 Capability Pointer****Read****Address 34<sub>H</sub>**PCI Configuration Address: 34<sub>H</sub>Default: 40<sub>H</sub>

31	30	29	28	27	26	25	24	23	22	21	20	19	18	17	16
Not Implemented								Not Implemented							
15	14	13	12	11	10	9	8	7	6	5	4	3	2	1	0
Not Implemented								Capability Pointer							

**Bit 7-0 Capability Pointer**

Hardwired to 40<sub>H</sub> to indicate the Power Management Capability list begins at offset 40<sub>H</sub>.

**8.4.10 Power Management Capability****Read****Address 40<sub>H</sub>**PCI Configuration Address: 40<sub>H</sub>Default: FE62 00 01<sub>H</sub>

31	30	29	28	27	26	25	24	23	22	21	20	19	18	17	16
Power Management Capability															
15	14	13	12	11	10	9	8	7	6	5	4	3	2	1	0
Next Item Pointer								Capability Identifier							

Bits 31-16 are Power Management Capability register. It is loaded from EEPROM at power on if EEPROM is not empty, else the default value is used.

**Bit 31-27 PME-Support**

Indicate states which can assert PME# signal:

XXXX1b - PME# can be asserted from D0

XXX1Xb - PME# can be asserted from D1

XX1XXb - PME# can be asserted from D2

X1XXXb - PME# can be asserted from D3<sub>hot</sub>

1XXXXb - PME# can be asserted from D3<sub>cold</sub>

Default is 11111b.

**Bit 26 D2\_Support**

1 = D2 state is supported. Default is 1.

**Bit 25 D1\_Support**

1 = D1 state is supported. Default is 1.

**Bits 24-22 Aux\_Current**

Indicating current requirement of 3.3V<sub>aux</sub> at D3<sub>cold</sub>. Default is 001b (55 mA).



## W6692A PCI ISDN S/T-Controller

### Bit 21 Device Specific Initialization

1 = Device specific initialization is needed. Default is 1.

### Bit 20 Reserved

Reserved. Read as 0.

### Bit 19 PME Clock

1 = PCI clock is needed for PME# assertion. Default is 0.

### Bits 18-16 Version

Default is 010b to indicate PCI Power Management Revision 1.1 compliant.

### Bits 15-8 Next Item Pointer

Hardwired to 00<sub>H</sub>, to indicate no further Capability list item.

### Bits 7-0 Capability Identifier

Hardwired to 01<sub>H</sub>, to indicate a PCI Power Management Identifier.

## 8.4.11 Power Management Control/Status

Read/Write

Address 44<sub>H</sub>

PCI Configuration Address: 44<sub>H</sub>

Default: 0000<sub>H</sub> for bits 31-16; X000,000X,0000,0000b for bits 15-0.

31	30	29	28	27	26	25	24	23	22	21	20	19	18	17	16
Operational Data								PMCSR_BSE							
15	14	13	12	11	10	9	8	7	6	5	4	3	2	1	0
Power Management Control/Status Register (PMCSR)															

### Bits 31-24 Operational Data Report Read

Reports the power operational data of whole PCI card. Not implemented. Read as 0.

### Bits 23-16 PMCSR PCI to PCI Bridge Support Extensions Read

Not implemented. Read as 0.

Bits 15-0 are the Power Management Control/Status register. A sticky bit has an indeterminate value at time of initial operating system boot. (It is not set/preset by PCI reset signal.)

### Bit 15 PME\_Status Read/Write-clear, Sticky

*This bit is set when W6692A would normally assert the PME# signal independent of the state of the PME\_En bit.* Writing a "1" to this bit will clear it and cause W6692A to stop asserting a PME# (if enabled). Writing a "0" has no effect.

	PME_En=0	PME-En=1
PME event occurred	PME_Status=1 PME# inactive	PME_Status=1 PME# active until PME-Status is cleared
No PME event	PME_Status=0 PME# inactive	PME_Status=0 PME# inactive

**W6692A PCI ISDN S/T-Controller****Bits 14-13      Data\_Scale      Read**

Used when interpreting the value of Data register. Not implemented. Read as 0.

**Bits 12-9      Data\_Select      Read**

Used to select which data is to be reported through the Data register and Data\_Scale field. Not implemented. Read as 0.

**Bit 8      PME\_En      Read/Write, Sticky**

A "1" enables W6692A to assert PME#. When "0", PME# assertion is disabled. If the PME# is active, writing "0" to this bit also clears the PME# signal.

**Bits 7-2      Reserved**

These bits are reserved and read as 0.

**Bits 1-0      Power State      Read/Write**

Used to get or set the device's power state.

00b - D0: fully operational

01b - D1: Not responds to PCI IO and memory accesses (PCI transation may or may not present, bus clock and VCC present), only responds to PCI configuration access, B2 HDLC stopped

10b - D2: Not responds to PCI IO and memory accesses (PCI transation may or may not present, bus clock may or may not present, VCC present), only responds to PCI configuration access, B1 and B2 HDLCs stopped

11b - D3<sub>hot</sub> : only responds to PCI configuration access accesses (PCI transation may or may not present, bus clock may or may not present, VCC may or may not present, 3.3Vaux present), a software re-initialization of the chip must be performed when returns to D0

Note : When waken up by PME event, software must read ISTA register or issue RRST command to clear the queued interrupt status bits.



## W6692A PCI ISDN S/T-Controller

### 9. ELECTRICAL CHARACTERISTICS

#### 9.1 Absolute Maximum Rating

Parameter	Symbol	Limit Values	Unit
Voltage on any pin with respect to ground	$V_S$	-0.4 to $V_{DD}+0.4$	V
Ambient temperature under bias	$T_A$	0 to 70	°C
Maximum voltage on $V_{DD}$	$V_{DD}$	6	V

#### 9.2 Power Supply

The power supply is  $5\text{ V} \pm 5\%$ .

#### 9.3 DC Characteristics

$T_A=0$  to  $70\text{ }^{\circ}\text{C}$ ;  $V_{DD}=5\text{ V} \pm 5\%$ ,  $V_{SSA}=0\text{ V}$ ,  $V_{SSD}=0\text{ V}$

Parameter	Symbol	Min	Max	Unit	Test conditions	Remarks
Low input voltage	$V_{IL}$	-0.4	0.8	V		
High input voltage	$V_{IH}$	2.0	$V_{DD}+0.4$	V		
Low output voltage	$V_{OL}$		0.4	V	$I_{OL}=12\text{ mA}$	
High output voltage	$V_{OH}$	2.4		V		
Analog power supply current: power down	$I_{CC}$		1.5	mA	$V_{DDA}=5\text{ V}$ , S/T layer 1 in state "F3 Deactivated without clock"	
Analog power supply current: activated	$I_{CC}$		6.5	mA	$V_{DD}=5\text{ V}$ , S/T layer 1 in state "F7 Activated"	
Input leakage current	$I_{LI}$		10	$\mu\text{A}$	$0\text{ V} < V_{IN} < V_{DD}$ to $0\text{ V}$	All pins except SX1,2, SR1,2
Output leakage current	$I_{LO}$		10	$\mu\text{A}$	$0\text{ V} < V_{OUT} < V_{DD}$ to $0\text{ V}$	All pins except SX1,2, SR1,2
Absolute value of output pulse amplitude ( $V_{SX2}-V_{SX1}$ )	$V_X$	2.03 2.10	2.31 2.39	V V	$R_L=50\text{ }\Omega$ <sup>1)</sup> $R_L=400\text{ }\Omega$ <sup>1)</sup>	SX1,2
Transmitter output current	$I_X$	7.5	13.4	mA	$R_L=5.6\text{ }\Omega$ <sup>1)</sup>	SX1,2



**W6692A PCI ISDN S/T-Controller**

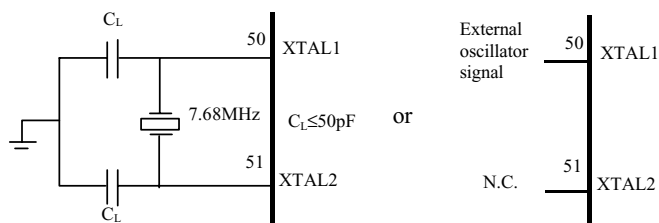
Transmitter output impedance	$R_X$	30 23		$k\Omega$ $\Omega$	Inactive or during binary ONE During binary ZERO ( $R_L=50\ \Omega$ )	SX1,2
------------------------------	-------	----------	--	-----------------------	--	-------

**Note:** <sup>1)</sup> Due to the transformer, the load resistance seen by the circuit is four times  $R_L$ .

**Capacitances**

$T_A=25\ ^\circ\text{C}$ ,  $V_{DD}=5\ \text{V} \pm 5\%$ ,  $V_{SSA}=0\text{V}$ ,  $V_{SSD}=0\text{V}$ ,  $f_c=1\ \text{Mhz}$ , unmeasured pins grounded.

Parameter	Symbol	Min.	Max.	Unit	Remarks
Input capacitance	$C_{IN}$		7	pF	All pins except SR1,2
I/O pin capacitance	$C_{IO}$		7	pF	All pins except SR1,2
Output capacitance against $V_{SSA}$	$C_{OUT}$		10	pF	SX1,2
Input capacitance	$C_{IN}$		7	pF	SR1,2
Load capacitance	$C_L$		50	pF	XTAL1,2

**Recommended oscillator circuits****Crystal specifications**

Parameter	Symbol	Values	Unit
Frequency	$f$	7.680	MHz
Frequency calibration tolerance		Max. 100	ppm
Load capacitance	$C_L$	Max. 50	pF
Oscillator mode		Fundamental	

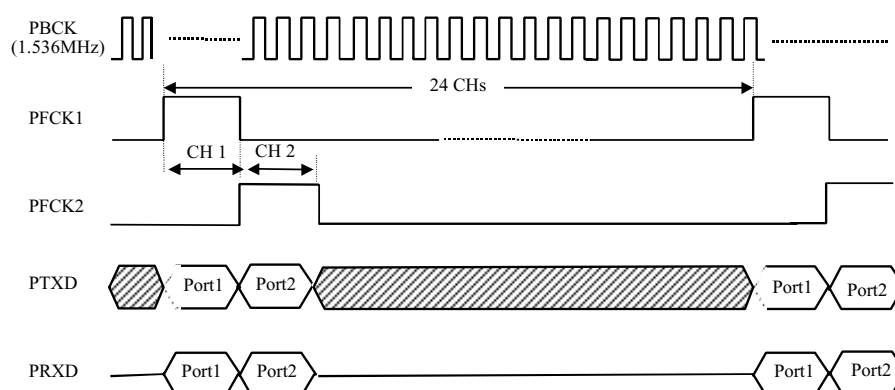
**Note:** The load capacitance  $C_L$  depends on the crystal specification. The typical values are 33 to 47 pF.

**External oscillator input (XTAL1) clock characteristics**

Parameter	Min.	Max.
Duty cycle	1:2	2:1

## 9.4 Preliminary Switching Characteristics

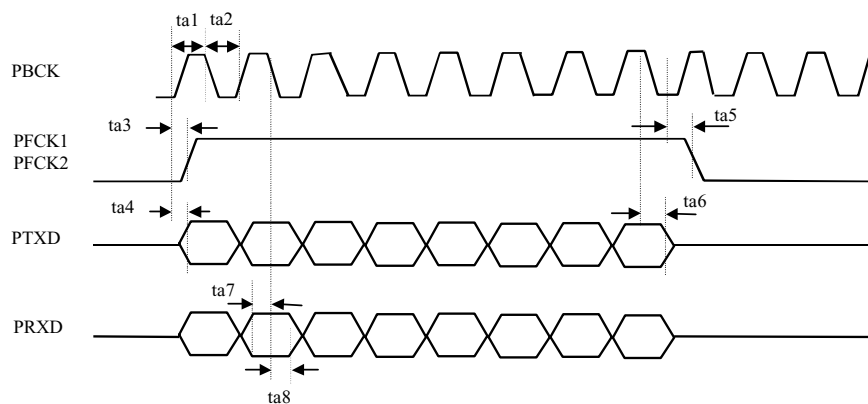
### 9.4.1 PCM Interface Timing



**Note 1:** These drawings are not to scale.

**Note 2 :** The frequency of PBCK is 1536 kHz which includes 24 channels of 64 kbps data. The PFCK1 and PFCK2 are located at channel 1 and channel 2, each with a 8 x PBCK duration.

### Detailed PCM timing



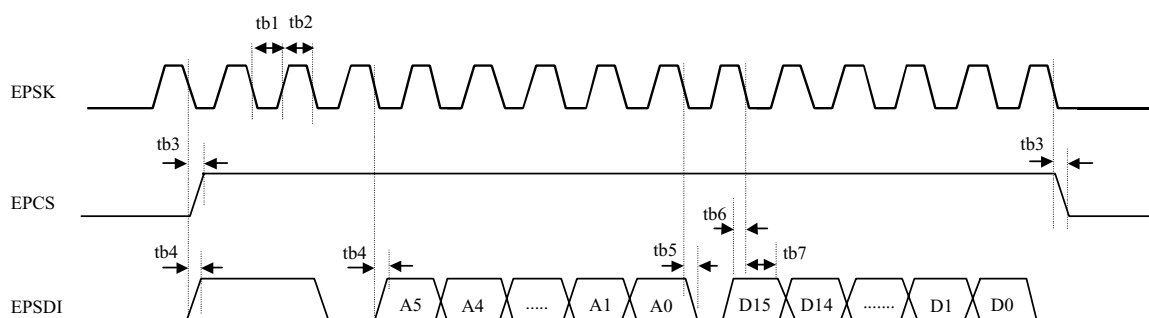


## W6692A PCI ISDN S/T-Controller

Parameter	Parameter Descriptions	Min.	Nominal	Max.	Remarks
ta1	PBCK pulse high		325		Unit = ns
ta2	PBCK pulse low	195	325	455	
ta3	Frame clock asserted from PBCK			20	
ta4	PTXD data delay from PBCK			20	
ta5	Frame clock deasserted from PBCK			20	
ta6	PTXD hold time from PBCK	10			
ta7	PRXD setup time to PBCK	20			
ta8	PRXD hold time from PBCK	10			

**Note :** The PCM clocks are locked to the S/T receive clock. At every two or three PCM frame time (125  $\mu$ s), PBCK and PFCK1, PFCK2 may be adjusted by one local oscillator cycle (130 ns) in order to synchronize with S/T clock. This shift is made on the LOW level time of PBCK and the HIGH level time is not affected. This introduces jitters on the PBCK, PFCK1 and PFCK2 with jitter amplitude 260 ns (peak-to-peak) and jitter frequency about 2.67~4 kHz.

### 9.4.2 Serial EEPROM Timing

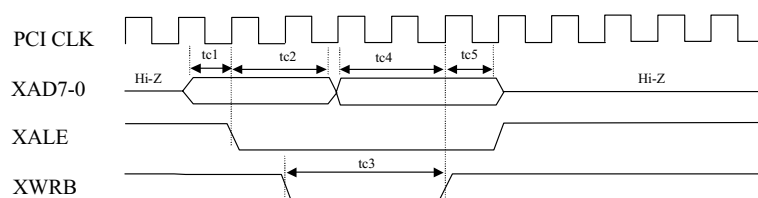


Parameter	Parameter Descriptions	Min.	Max.	Remarks
tb1	EPSK low	2500		Unit = ns
tb2	EPSK high	2500		
tb3	EPCS output delay		30	
tb4	EPSD output delay		30	
tb5	EPSD tri-state delay		30	
tb6	EPSD input setup time	30		
tb7	EPSD input hold time	30		

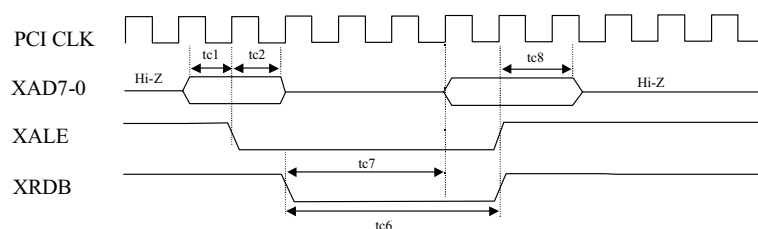
### 9.4.3 Peripheral Interface Timing

8-bit microprocessor timing when XMODE = 1:

#### Peripheral Write



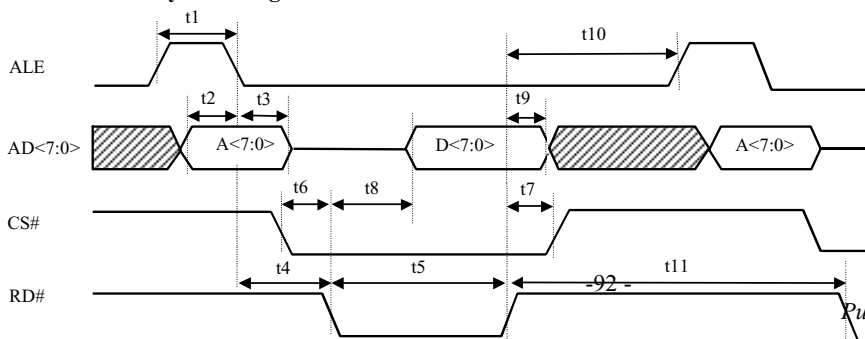
#### Peripheral Read

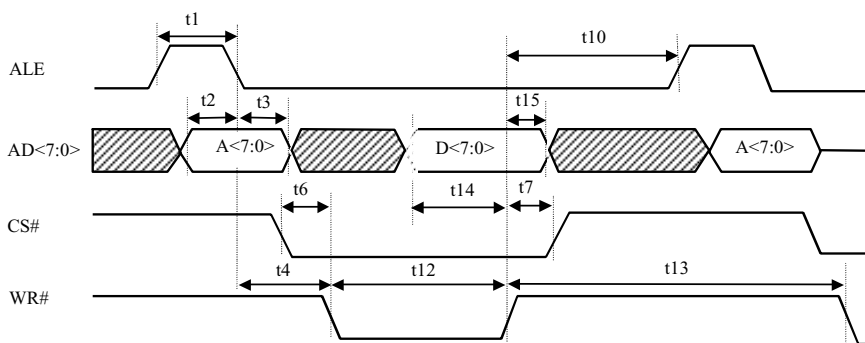
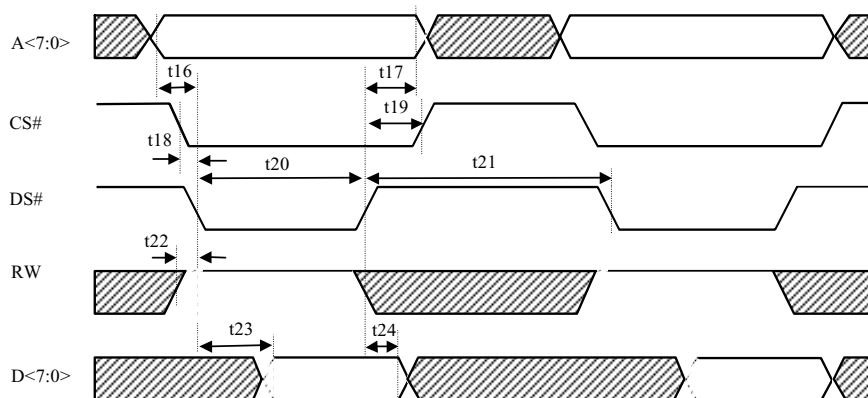


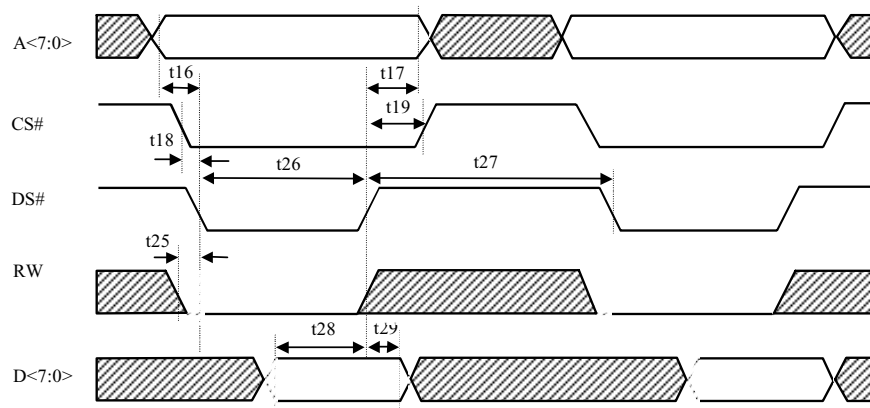
Parameter	Parameter Descriptions	Min.	Max.	Typical	Remarks
tc1	XA7-0 setup time			30	Unit = ns
tc2	XA7-0 hold time			30	
tc3	XWRB pulse width			60	
tc4	write data setup time			90	
tc5	write data hold time			30	
tc6	XRDB pulse width			120	
tc7	read data delay time		90		
tc8	read data hold time	0			

### 9.4.5 8-bit Microprocessor Timing

#### Intel mode read cycle timing



**W6692A PCI ISDN S/T-Controller**
**Intel mode write cycle timing**

**Motorola mode read cycle timing**



**W6692A PCI ISDN S/T-Controller**
**Motorola mode write cycle timing**


Parameter	Parameter Descriptions	Min.	Max.	Remarks
t1	ALE pulse width	50		
t2	address setup time to ALE	15		
t3	address hold time from ALE	10		
t4	address setup time to RD#, WR#	0		
t5	RD# pulse width	110		
t6	CS# setup time to RD#, WR#	0		
t7	CS# hold time from RD#, WR#	0		
t8	data output delay from RD#		50	
t9	data float from RD#		25	
t10	ALE guard time	15		
t11	RD# recovery time	70		
t12	WR# pulse width	60		
t13	WR# recovery time	70		
t14	data setup time to WR#	35		
t15	data hold time from WR#	10		
t16	address setup time to DS#	25		
t17	address hold time from DS#	10		
t18	CS# setup time to DS#	10		
t19	CS# hold time from DS#	10		
t20	DS# read pulse width	110		
t21	DS# read recovery time	70		
t22	RW setup time to DS# read	0		
t23	data output delay from DS#		110	
t24	data hold time from DS#		25	
t25	RW setup time to DS# write	0		
t26	DS# write pulse width	60		
t27	DS# write recovery time	70		
t28	write data setup time to DS#	35		
t29	write data hold time from DS#	10		



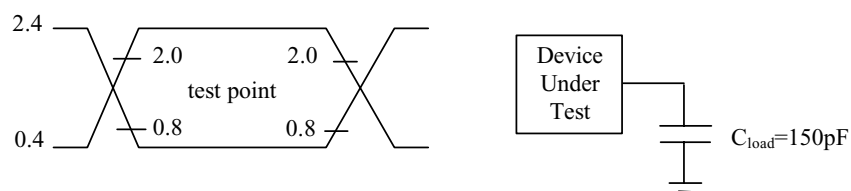
## W6692A PCI ISDN S/T-Controller

### 9.5 AC Timing Test Conditions

$T_A = 0$  to  $70^\circ\text{C}$ ,  $V_{DD} = 5\text{ V} \pm 5\%$

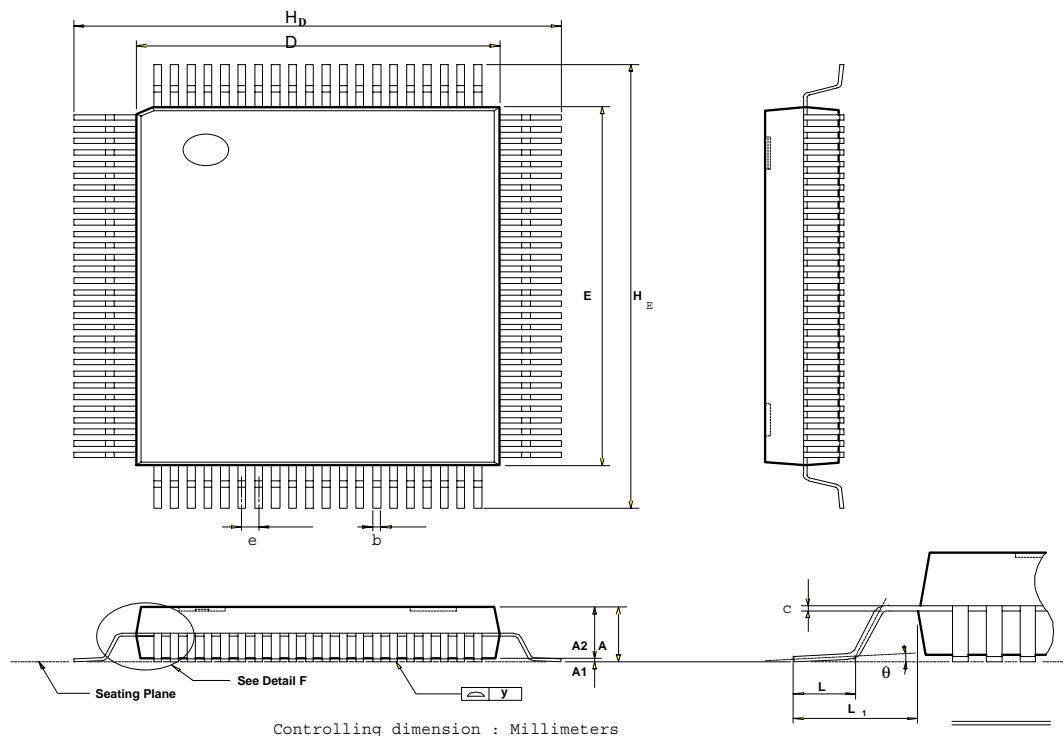
Inputs are driven to 2.4 V for logical 1 and 0.4 V for logical 0. Measurements are made at 2.0 V for logical 1 and 0.8 V for logical 0. The AC testing input/output waveforms are shown below :

” 0”.



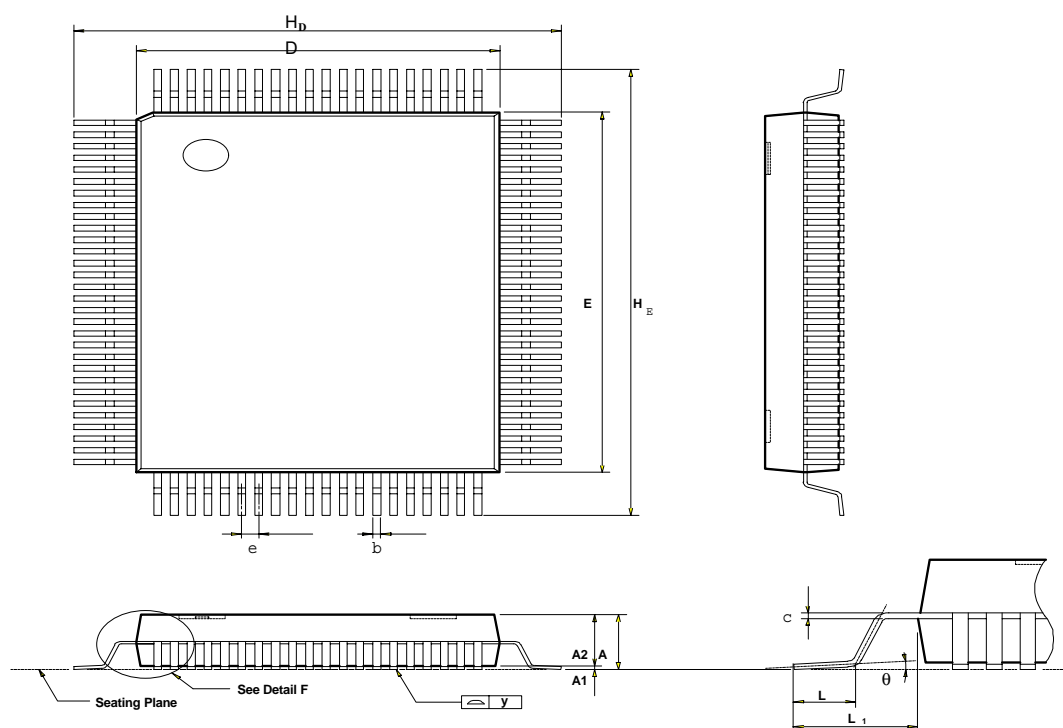
### 10. ORDERING INFORMATION

Part Number	Package Type	Production Flow
W6692ACF	100 Pin QFP	Commercial, $0^\circ\text{C}$ to $+70^\circ\text{C}$
W6692ACD	100 Pin LQFP	Commercial, $0^\circ\text{C}$ to $+70^\circ\text{C}$

**11. PACKAGE SPECIFICATIONS**
**100PIN QFP(14x20x2.75mm footprint 4.8mm)**


Symbol	Dimension in inch			Dimension in mm		
	Min	Nom	Max	Min	Nom	Max
<b>A</b>	—	—	—	—	—	—
<b>A<sub>1</sub></b>	0.010	0.014	0.018	0.25	0.35	0.45
<b>A<sub>2</sub></b>	0.101	0.107	0.113	2.57	2.72	2.87
<b>b</b>	0.008	0.012	0.016	0.20	0.30	0.40
<b>c</b>	0.004	0.006	0.008	0.10	0.15	0.20
<b>D</b>	0.547	0.551	0.555	13.90	14.00	14.10
<b>E</b>	0.783	0.787	0.791	19.90	20.00	20.10
<b>e</b>	0.020	0.026	0.032	0.498	0.65	0.802
<b>H<sub>D</sub></b>	0.746	0.740	0.756	18.40	18.80	19.20
<b>H<sub>E</sub></b>	0.960	0.976	0.992	24.40	24.80	25.20
<b>L</b>	0.039	0.047	0.055	1.00	1.20	1.40
<b>L<sub>1</sub></b>	—	0.064	—	—	2.40	—
<b>y</b>	—	—	0.003	—	—	0.08
<b>θ</b>	0 °	—	7 °	0 °	—	7 °




**W6692A PCI ISDN S/T-Controller**
**100PIN LQFP(14x20x1.4mm footprint 2.0mm)**


Controlling dimension : Millimeters

Symbol	Dimension in inch			Dimension in mm		
	Min	Nom	Max	Min	Nom	Max
<b>A</b>	—	—	—	—	—	—
<b>A<sub>1</sub></b>	0.002	0.004	0.006	0.05	0.10	0.15
<b>A<sub>2</sub></b>	0.053	0.055	0.057	1035	1.40	1.45
<b>b</b>	0.009	0.013	0.015	0.22	0.32	0.38
<b>c</b>	0.004	0.006	0.008	0.10	0.15	0.20
<b>D</b>	0.547	0.551	0.555	13.90	14.00	14.10
<b>E</b>	0.783	0.787	0.791	19.90	20.00	20.10
<b>e</b>	0.020	0.026	0.032	0.498	0.65	0.802
<b>H<sub>D</sub></b>	0.626	0.630	0.634	15.90	16.00	16.10
<b>H<sub>E</sub></b>	0.862	0.866	0.870	21.90	22.00	22.10
<b>L</b>	0.018	0.024	0.030	0.45	0.60	0.75
<b>L<sub>1</sub></b>	—	0.039	—	—	1.00	—
<b>y</b>	—	—	0.003	—	—	0.08
<b>θ</b>	0 °	—	7 °	0 °	—	7 °



***W6692A PCI ISDN S/T-Controller***



**Headquarters**

No. 4, Creation Rd. III  
Science-Based Industrial Park  
Hsinchu, Taiwan  
TEL: 886-35-770066  
FAX: 886-35-789467  
www: <http://www.winbond.com.tw/>

**Taipei Office**

11F, No. 115, Sec. 3, Min-Sheng East Rd.  
Taipei, Taiwan  
TEL: 886-2-7190505  
FAX: 886-2-7197502  
TLX: 16485 WINTPE

**Winbond Electronics (H.K.) Ltd.**

Rm. 803, World Trade Square, Tower II  
123 Hoi Bun Rd., Kwun Tong  
Kowloon, Hong Kong  
TEL: 852-27516023-7  
FAX: 852-27552064

**Winbond Electronics**

**(North America) Corp.**

2730 Orchard Parkway  
San Jose, CA 95134 U.S.A.  
TEL: 1-408-9436666  
FAX: 1-408-9436668

---

Note: All data and specifications are subject to change without notice.