

200 V - 1,000 V Rectifiers

1.5 A Forward Current
2000 ns Recovery Time

1N5614U 1N5616U
1N5618U 1N5620U
1N5622U

SURFACE MOUNT
HERMETICALLY SEALED

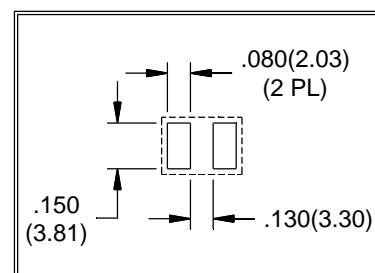
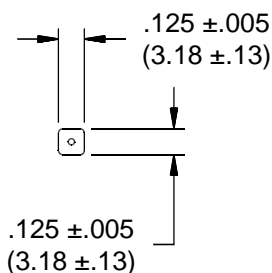
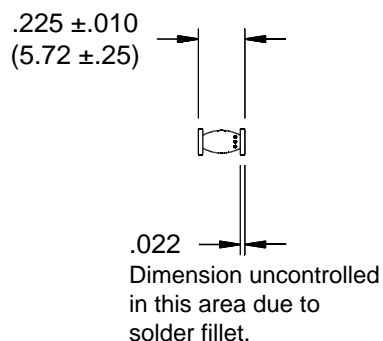


ELECTRICAL CHARACTERISTICS AND MAXIMUM RATINGS

Part Number	Working Reverse Voltage	Average Rectified Current		Reverse Current @ Vrwm		Forward Voltage		1 Cycle Surge Current tp=8.3ms (Ifsm)	Repetitive Surge Current (Ifrm)	Reverse Recovery Time (3) (Trr)	Thermal Impd. θ_{J-C}	Junction Cap. @50VDC @1kHz (Cj)
	(Vrwm)	(Io)		(Ir)		(Vf)						
		55°C(1)	100°C(2)	25°C	100°C	25°C	25°C	25°C	25°C	25°C	25°C	25°C
	Volts	Amps	Amps	µA	µA	Volts	Amps	Amps	Amps	ns	°C/ W	pF
1N5614U	200	1.50	0.75	0.5	25	1.3	3.0	30	10	2000	5	16
1N5616U	400	1.50	0.75	0.5	25	1.3	3.0	30	10	2000	5	16
1N5618U	600	1.50	0.75	0.5	25	1.3	3.0	30	10	2000	5	16
1N5620U	800	1.50	0.75	0.5	25	1.3	3.0	30	10	2000	5	16
1N5622U	1000	1.50	0.75	0.5	25	1.3	3.0	30	10	2000	5	16

(1)TC=55°C (2)TC=100°C (3)If=0.5A, Ir=1.0A, Irr=0.25A *Op. Temp.= -65°C to +175°C Stg. Temp.= -65°C to +200°C

Markings:
Three Dots for polarity.



Dimensions: In. (mm) • All temperatures are ambient unless otherwise noted. • Data subject to change without notice.



VOLTAGE MULTIPLIERS INC.
8711 W. Roosevelt Ave.
Visalia, CA 93291

TEL 559-651-1402
FAX 559-651-0740
www.voltagemultipliers.com

1N5614U 1N5616U 1N5618U 1N5620U 1N5622U

