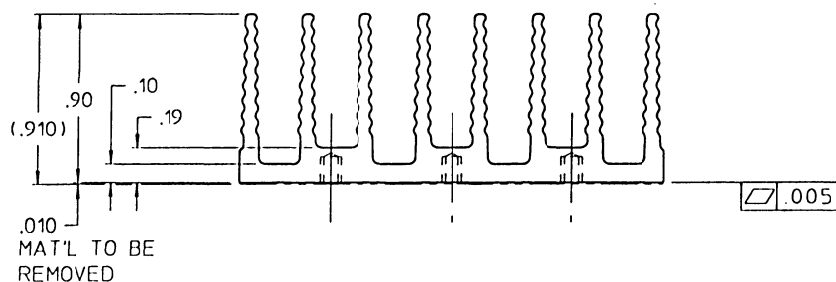
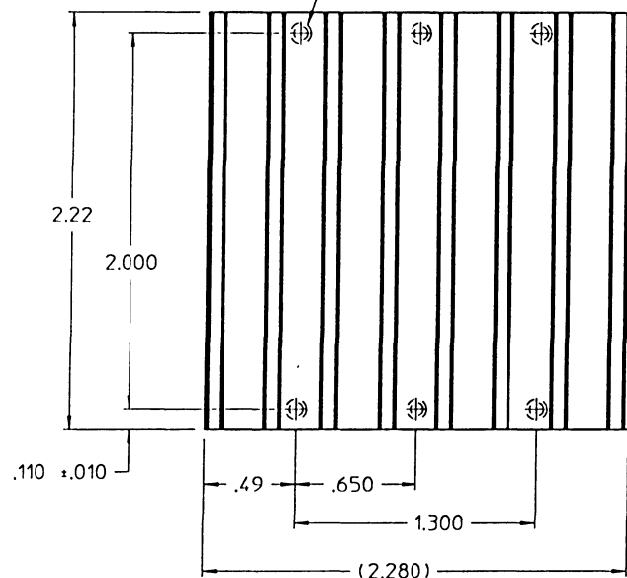


VICOR CONFIDENTIAL

THIS DOCUMENT AND THE DATA DISCLOSED
HEREIN OR HEREWITH IS NOT TO BE REPRODUCED,
USED, OR DISCLOSED IN WHOLE OR IN PART
TO ANYONE WITHOUT PERMISSION OF VICOR CORP.

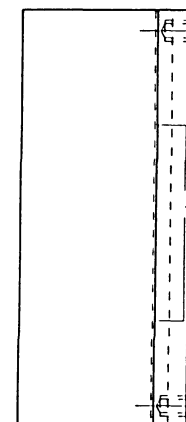
#4-40 UNC-2B COLD FORM TAP
.140 DP MIN, FROM FAR SIDE
DO NOT BREAK THRU
(6) PLS



NOTES

1. MAKE FROM VICOR EXTRUSION P/N 15983.
2. REMOVE ALL BURRS AND SHARP EDGES.
3. FINISH. CLEAR CHROMATE.
4. STAMP PART NUMBER AND REVISION USING .15 HIGH CHARACTERS APPROX. WHERE SHOWN

REV.	DESCRIPTION	DATE	APPROVED
#1	RELEASED FOR DEVELOPMENT	DPK	2/18/97
#2	M3X.5 WAS #4-40	DPK	3/4/97
#3	REVISED DRAWING	JMR	3/6/97
#4	#4-40 TAP WAS M3X.5	DPK	4/22/97
#5	THD DEPTH .140 WAS .120 .190 WAS .170	DPK	9/17/97
#6	ADDED TOP RIGHT VIEW. REVISED NOTES	DPK	10/1/97
#7	2 PLC DIMS 2.20 .49 .90 .10 .15 W/ 3 PLC	DPK	10/17/97
#8	2.22 WAS 2.20 ADDED .010 OL	DPK	12/10/97



SEE NOTE 4

COPY

ORIGINAL
ONLY WHEN STAMPED
IN RED

Drawn BY	DATE	VICOR	
UNLESS OTHERWISE SPECIFIED DIMENSIONS ARE IN INCHES TOLERANCES ARE FRACTIONS DECIMALS ANGLES +1/64 -0.01 .1° XXX+.005	2/97		
THIRD ANGLE PROJECTION	SIZE	FIG. NO.	DWG. NO.
100 NOT SCALE DRAWING	C	87131	15985
	SCALE	2-1	SHEET 1 OF 1