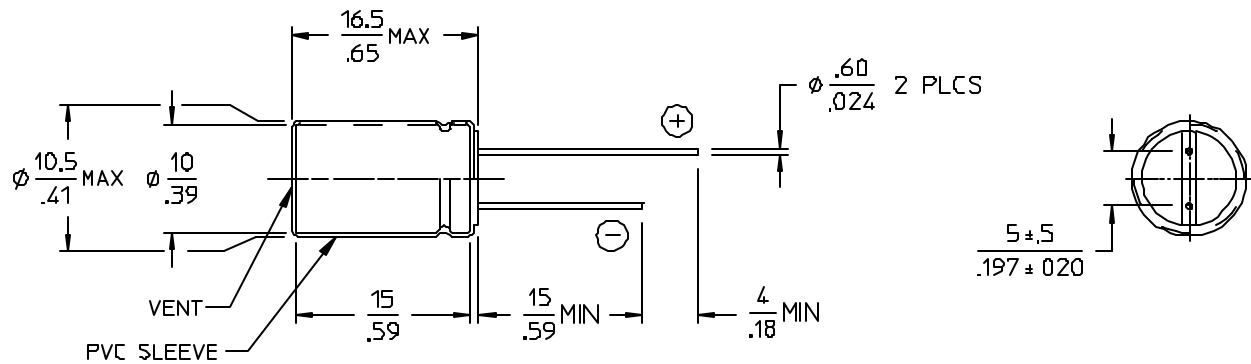


REV	DESCRIPTION		DATE	APPROVED
01	RELEASED- E020061	RCM	3/6/02	GCK



ELECTRICAL CHARACTERISTICS @ $T_a = 20^\circ\text{C}$, 120HZ (UNLESS OTHERWISE SPECIFIED)


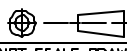
PARAMETER	SYMBOL	MIN	MAX	UNITS	TEST CONDITIONS
CAPACITANCE	C	312	468	μF	0.5Vrms
WORKING VOLTAGE	V_{DCW}	16		V	
SURGE VOLTAGE	V_{SURGE}	20		V	
LEAKAGE CURRENT	I_{DCL}		187.2	μA	1 MINUTE
DISSIPATION FACTOR	$\tan \delta$		0.16		
IMPEDANCE	Z		$\frac{0.21}{0.55}$	Ω	$\frac{100\text{KHZ}, +20^\circ\text{C}}{100\text{KHZ}, -10^\circ\text{C}}$
RIPPLE CURRENT	I_{RIPPLE}		635	mA	$T_a = 105^\circ\text{C}$, 100KHZ
OPERATING TEMPERATURE RANGE	T_{OP}	-55	+105	$^\circ\text{C}$	

- NOTES:
1. MATERIAL: ALUMINUM ELECTROLYTIC.
 2. SOLVENT PROOF END SEAL.
 3. DIMENSIONS ARE METRIC.
INCH

MAXIMUM PERMISSIBLE RIPPLE CURRENT

FREQUENCY MULTIPLIER					
FREQUENCY IN Hz					
50	120	300	1K	10K	100K
0.65	0.80	0.90	0.98	1.00	1.00

TEMPERATURE MULTIPLIER		
TEMPERATURE	85 $^\circ\text{C}$	105 $^\circ\text{C}$
MULTIPLIER	1.75	1

DRAWN BY GCK		DATE 01/14/02			
<small>UNLESS OTHERWISE SPECIFIED DIMENSIONS ARE IN INCHES TOLERANCES ARE FRACTIONS DECIMALS ANGLES +1/64 .XX- +.01 .1° XX- .005</small>					
THIRD ANGLE PROJECTION 		SIZE B		FSCM NO. 67131	
DO NOT SCALE DRAWING		DWG NO 13443		REV 01	
SCALE 2X		SHEET 1 OF 1			