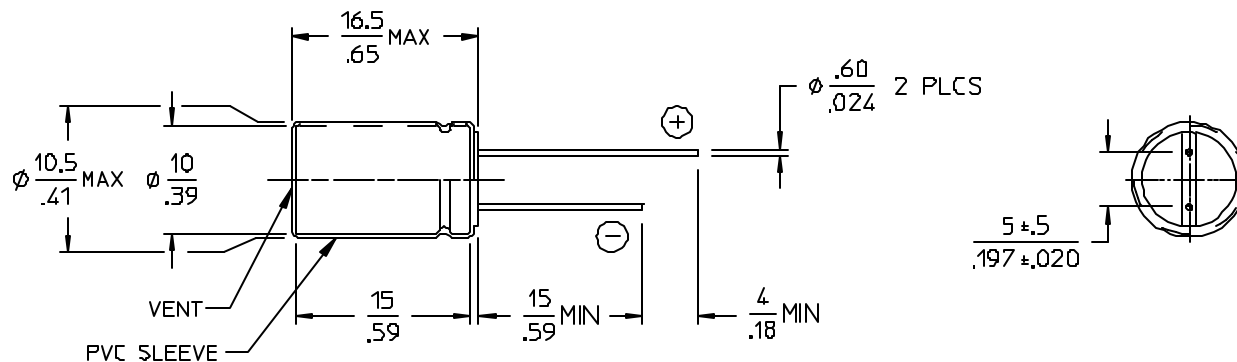


VICOR CONFIDENTIAL

THIS DOCUMENT AND THE DATA DISCLOSED HEREIN OR HEREWITH IS NOT TO BE REPRODUCED, USED, OR DISCLOSED IN WHOLE OR IN PART TO ANYONE WITHOUT PERMISSION OF VICOR CORP.

REV	DESCRIPTION	DATE	APPROVED
01	RELEASED- E020061	RCM 01/14/02	GCK



ELECTRICAL CHARACTERISTICS @ Ta= 20°C, 120Hz (UNLESS OTHERWISE SPECIFIED)

PARAMETER	SYMBOL	MIN	MAX	UNITS	TEST CONDITIONS
CAPACITANCE	C	448	672	uF	0.5Vrms
WORKING VOLTAGE	V _{DCW}	10		V	
SURGE VOLTAGE	V _{SURGE}	13		V	
LEAKAGE CURRENT	I _{DCL}		168	uA	1 MINUTE
DISSIPATION FACTOR	tan δ		0.19		
IMPEDANCE	Z		$\frac{0.22}{0.57}$	Ω	$\frac{100\text{KHZ}, 20^\circ\text{C}}{100\text{KHZ}, -10^\circ\text{C}}$
RIPPLE CURRENT	I _{RIPPLE}		635	mA	Ta= 105°C, 100KHZ
OPERATING TEMPERATURE RANGE	T _{OP}	-55	+105	°C	

NOTES:

1. MATERIAL: ALUMINUM ELECTROLYTIC.
2. SOLVENT PROOF END SEAL.
3. DIMENSIONS ARE METRIC.
INCH


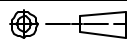
MAXIMUM PERMISSIBLE RIPPLE CURRENT

FREQUENCY MULTIPLIER

FREQUENCY IN Hz					
50	120	300	1K	10K	100K
0.65	0.80	0.90	0.98	1.00	1.00

TEMPERATURE MULTIPLIER

TEMPERATURE	85°C	105°C
MULTIPLIER	1.75	1

DRAWN BY GCK	DATE 01/14/02				
UNLESS OTHERWISE SPECIFIED DIMENSIONS ARE IN INCHES TOLERANCES ARE FRACTIONS DECIMALS ANGLES +1/64 .XX- +.01 .1° XXX-.005					
THIRD ANGLE PROJECTION 	SIZE B	FSCM NO. 67131	DWG NO 13441	REV 01	CAPACITOR, ALEL, RADIAL, 560uF, ±20%, 10V
DO NOT SCALE DRAWING	SCALE 2X			SHEET 1 OF 1	

**CAPACITOR, ALEL, RADIAL,
560uF, ±20%, 10V**