

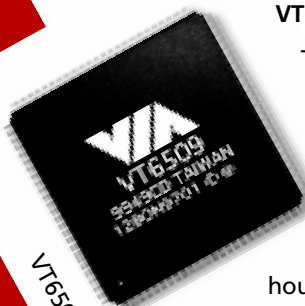
VIA Atlantic

8-/9-port Switch Controller Solutions

The VIA Atlantic family of switch controllers provides network system manufacturers the ideal platform for building intelligent, cost-effective, and scalable 8-/9-port switches for small to medium sized businesses.



VT6508



VT6509

The VIA Atlantic (VT6508) and VIA Atlantic SMF (VT6509) 8-/9-port 10/100 Base-T single chip switch controllers combine the benefits of network scalability, manageability and plug and play connectivity. Their highly integrated feature set enables network system manufacturers to build next-generation, intelligent switches for the fast-growing small to medium business market segment at price points only previously possible with unmanaged switches and repeaters.

VT6508 VIA Atlantic

The VIA Atlantic is an 8-port intelligent switch controller that utilizes fast store and forward architecture to ensure low latency and high data integrity. All 8 ports can be individually configured to connect to both 10Base-T and 100Base-T devices through auto sensing or manual selection. IEEE 802.3, 802.3.u and 802.3X specifications are fully supported. The VIA Atlantic is housed in a 128-pin PQFP package.

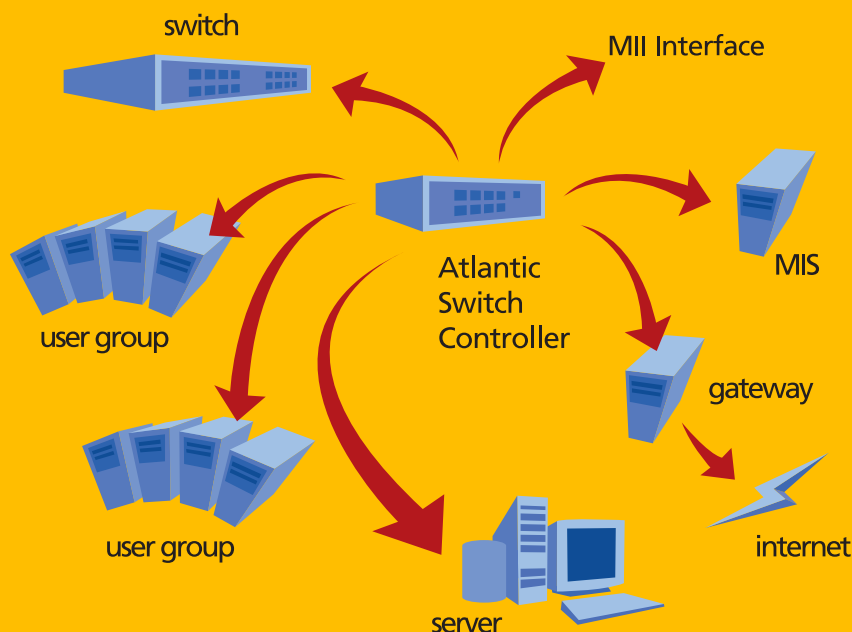
VT6509 VIA Atlantic SMF (Smart Management Functions)

The VIA Atlantic SMF, an intelligent 9-port switch controller has all the features of the VIA Atlantic with the addition of smart management functions. With an MII interface for flexible 10 Base-T, 100 Base-T or 100 Base-FX expansion capabilities and support for smart management functions. The VIA Atlantic SMF also allows Trunking, Port Mirroring and supports the Spanning Tree Protocol. Any of the VIA Atlantic SMF's 9 ports can be used as the sniffer port to monitor other ports. The VIA Atlantic SMF is housed in a 208-pin PQFP package.



VIA Atlantic / VIA Atlantic SMF

VIA ATLANTIC / ATLANTIC SMF



BENEFITS OF VIA ATLANTIC-BASED NETWORK SWITCHES

- **Simplicity**
Provides a simple low maintenance plug and play network interconnect system for small to medium size businesses.
- **Scalability**
Highly scalable feature set allows system manufacturers to enable or disable a range of features to best meet their target price point.
- **Economical**
Highly integrated design drives down overall switch manufacturing costs enabling the migration from unmanaged switches and repeaters to intelligent next generation switch solutions.

FEATURES

VIA Atlantic

- Single chip 8 port RMII Fast Ethernet switch controller
- Auto-sensing or manual selection for 10 and 100Mbps speed settings
- IEEE 802.3X flow control for full duplex operation
- Optional back pressure for half duplex operation
- Performs full wire-speed forwarding
- Support for port trunking
- Sniffer function monitors network traffic
- 128-pin PQFP package for the VT6508, 208-pin PQFP package for the VT6509

VIA Atlantic SMF

- Single chip 9-port RMII Fast Ethernet switch controller
- CPU Interface to support management functions
- Reversed MII interface for on-board CPU with embedded MAC, e.g. ARM
- Trunking
 - Port-based Trunking
 - Two 2-ports trunk groups
 - Load balance
- Port Mirroring
 - Any of 8/9 ports could be Sniffer Port
 - Monitor any other ports
- Spanning Tree
 - Support Spanning Tree Protocol (STP) and Bridge Protocol Data Unit (BPDU)
- STP packets generated by CPU

VIA Technologies, Inc.

Offices
USA
1045 Mission Ct.,
Fremont, CA 94539
USA
tel: (510)683-3300
fax: (510)683-3301

Taiwan, ROC
8F, #533, Chung-cheng Rd.,
Hsin Tien, Taipei,
Taiwan, ROC
tel: (886-2)2218-5452
fax: (886-2)2218-5453
email: mkt@via.com.tw

www.viatech.com

