



# STS 8205

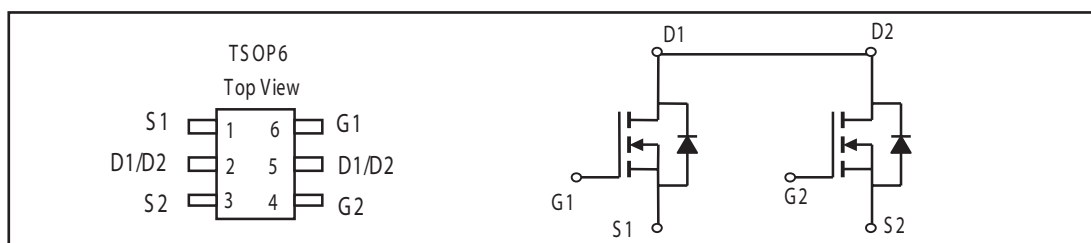
## Dual N-Channel Enhancement Mode Field Effect Transistor

### PRODUCT SUMMARY

V <sub>DSS</sub>	I <sub>D</sub>	R <sub>DS(ON)</sub> ( m $\Omega$ ) Max
20V	4A	30 @ V <sub>GS</sub> = 4.0V 46 @ V <sub>GS</sub> = 2.5V

### FEATURES

- Super high dense cell design for low R<sub>DS(ON)</sub>.
- Rugged and reliable.
- Surface Mount Package.



### ABSOLUTE MAXIMUM RATINGS (T<sub>A</sub>=25 °C unless otherwise noted)

Parameter	Symbol	Limit	Unit
Drain-Source Voltage	V <sub>DS</sub>	20	V
Gate-Source Voltage	V <sub>GS</sub>	±10	V
Drain Current-Continuous @ T <sub>J</sub> =25 °C -Pulsed <sup>b</sup>	I <sub>D</sub>	4	A
	I <sub>DM</sub>	25	A
Drain-Source Diode Forward Current <sup>a</sup>	I <sub>S</sub>	2	A
Maximum Power Dissipation <sup>a</sup>	P <sub>D</sub>	1.25	W
Operating Junction and Storage Temperature Range	T <sub>J</sub> , T <sub>STG</sub>	-55 to 150	°C

### THERMAL CHARACTERISTICS

Thermal Resistance, Junction-to-Ambient <sup>a</sup>	R $\theta$ JA	100	°C/W
--	---------------	-----	------

# STS 8205

## ELECTRICAL CHARACTERISTICS (TA=25 °C unless otherwise noted)

Parameter	Symbol	Condition	Min	Typ <sup>c</sup>	Max	Unit
OFF CHARACTERISTICS						
Drain-Source Breakdown Voltage	BV <sub>DSS</sub>	V <sub>GS</sub> =0V, I <sub>D</sub> =250uA	20			V
Zero Gate Voltage Drain Current	I <sub>DSS</sub>	V <sub>DS</sub> =16V, V <sub>GS</sub> =0V			1	uA
Gate-Body Leakage	I <sub>GSS</sub>	V <sub>GS</sub> =± 10V,V <sub>DS</sub> =0V			±100	nA
ON CHARACTERISTICS <sup>b</sup>						
Gate Threshold Voltage	V <sub>GS(th)</sub>	V <sub>DS</sub> =V <sub>GS</sub> , I <sub>D</sub> = 250uA	0.5	0.8	1.5	V
Drain-Source On-State Resistance	R <sub>DS(ON)</sub>	V <sub>GS</sub> =4.0V, I <sub>D</sub> = 4A		27	30	m ohm
		V <sub>GS</sub> =2.5V, I <sub>D</sub> = 3A		35	46	m ohm
Forward Transconductance	g <sub>FS</sub>	V <sub>DS</sub> = 5V, I <sub>D</sub> =4A		13		S
DYNAMIC CHARACTERISTICS <sup>c</sup>						
Input Capacitance	C <sub>ISS</sub>	V <sub>DS</sub> =8V, V <sub>GS</sub> = 0V f =1.0MHz		800		pF
Output Capacitance	C <sub>OSS</sub>			155		pF
Reverse Transfer Capacitance	C <sub>RSS</sub>			125		pF
SWITCHING CHARACTERISTICS <sup>c</sup>						
Turn-On Delay Time	t <sub>D(ON)</sub>	V <sub>DD</sub> = 10V, I <sub>D</sub> = 1A, V <sub>GEN</sub> = 4.0V, R <sub>L</sub> = 10 ohm R <sub>GEN</sub> = 10 ohm		18.3		ns
Rise Time	t <sub>r</sub>			4.8		ns
Turn-Off Delay Time	t <sub>D(OFF)</sub>			43.5		ns
Fall Time	t <sub>f</sub>			20		ns
Total Gate Charge	Q <sub>g</sub>	V <sub>DS</sub> =10V, I <sub>D</sub> = 4A, V <sub>GS</sub> =4.0V		11		nC
Gate-Source Charge	Q <sub>gs</sub>			2.2		nC
Gate-Drain Charge	Q <sub>gd</sub>			2.5		nC

# STS 8205

## ELECTRICAL CHARACTERISTICS (T<sub>A</sub>=25 °C unless otherwise noted)

Parameter	Symbol	Condition	Min	Typ <sup>c</sup>	Max	Unit
DRAIN-SOURCE DIODE CHARACTERISTICS <sup>b</sup>						
Diode Forward Voltage	V <sub>SD</sub>	V <sub>GS</sub> = 0V, I <sub>S</sub> =2A		0.8	1.2	V

### Notes

- a.Surface Mounted on FR4 Board, t<sub>≤</sub>10sec.
- b.Pulse Test:Pulse Width ≤ 300us, Duty Cycle ≤ 2%.
- c.Guaranteed by design, not subject to production testing.

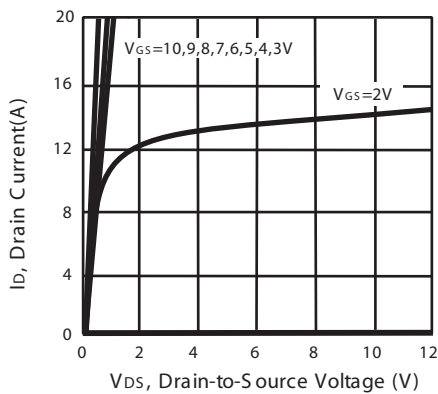


Figure 1. Output Characteristics

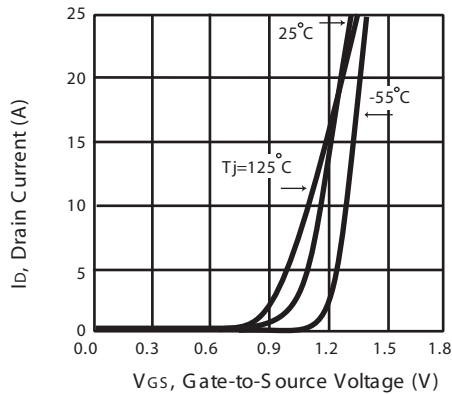


Figure 2. Transfer Characteristics

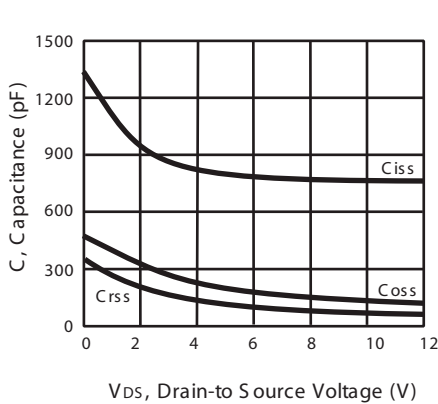


Figure 3. Capacitance

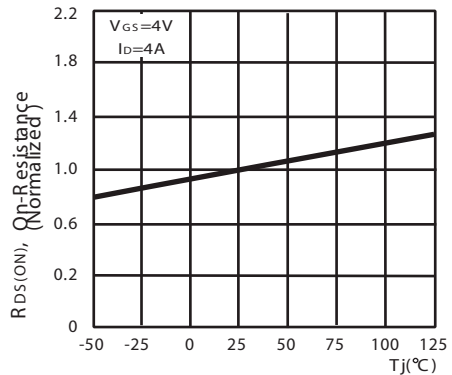
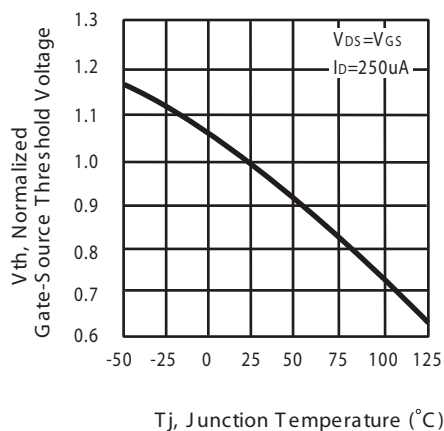


Figure 4. On-Resistance Variation with Temperature

# STS 8205



with Temperature

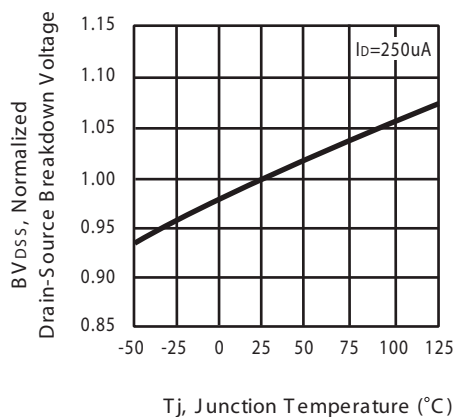


Figure 6. Breakdown Voltage Variation with Temperature

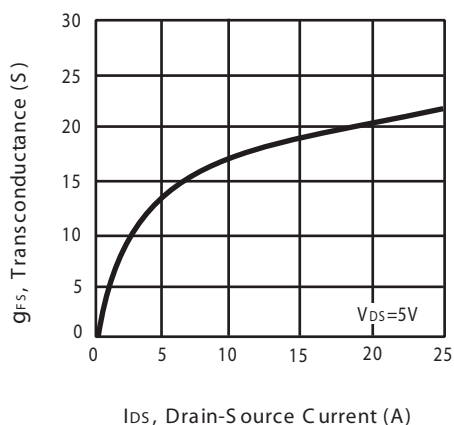


Figure 7. Transconductance Variation with Drain Current

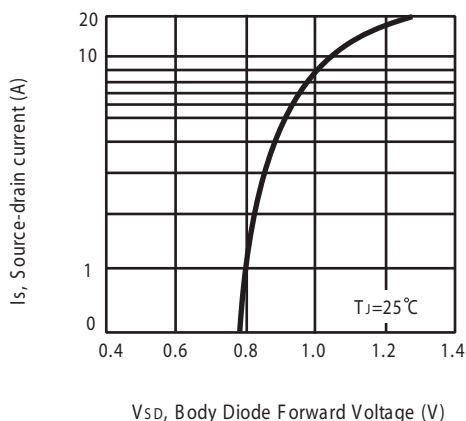


Figure 8. Body Diode Forward Voltage Variation with Source Current

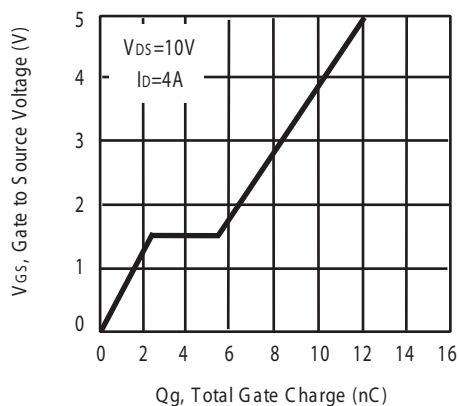


Figure 9. Gate Charge

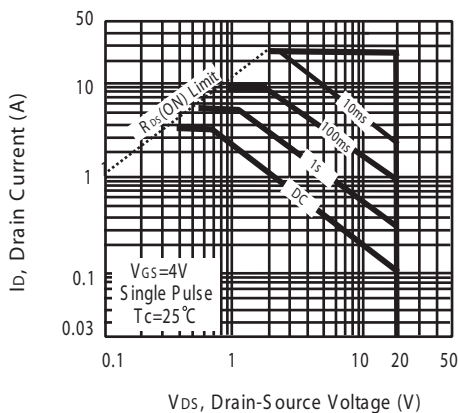


Figure 10. Maximum Safe Operating Area

# STS 8205

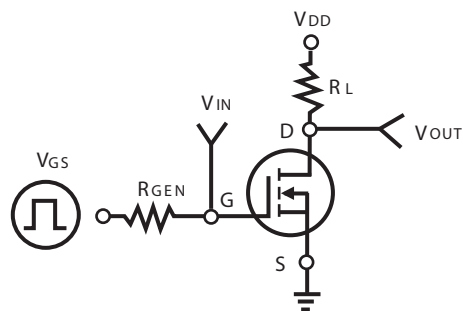


Figure 11. Switching Test Circuit

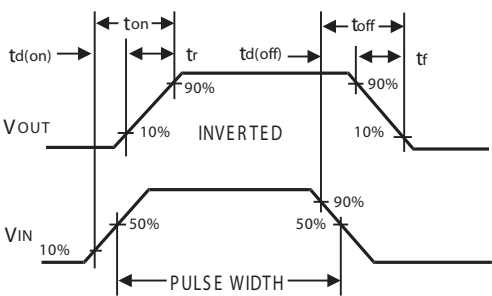
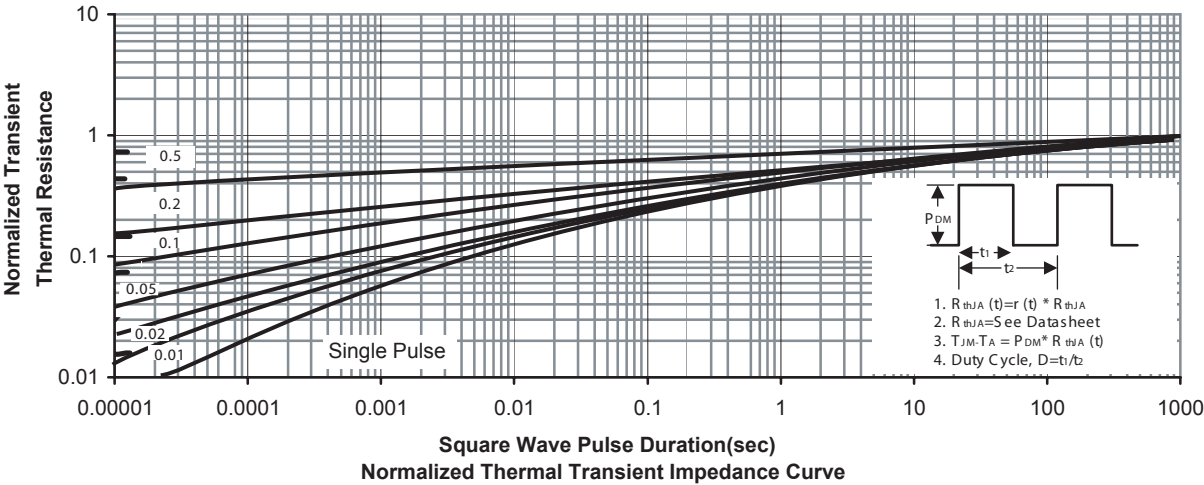


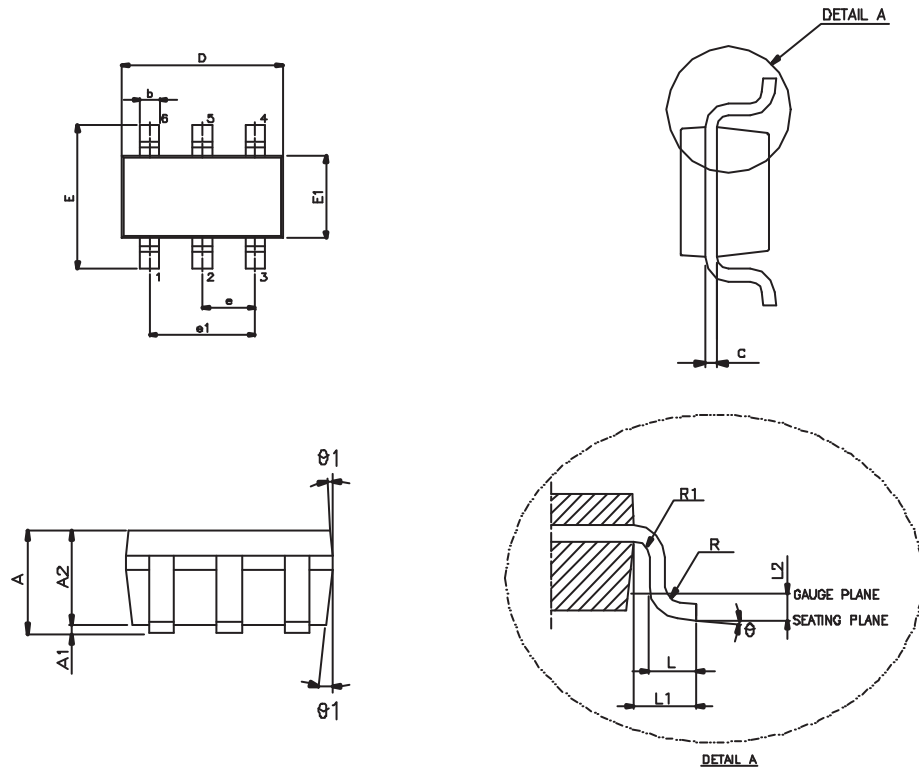
Figure 12. Switching Waveforms



# STS 8205

## PACKAGE OUTLINE DIMENSIONS

### TSOP6

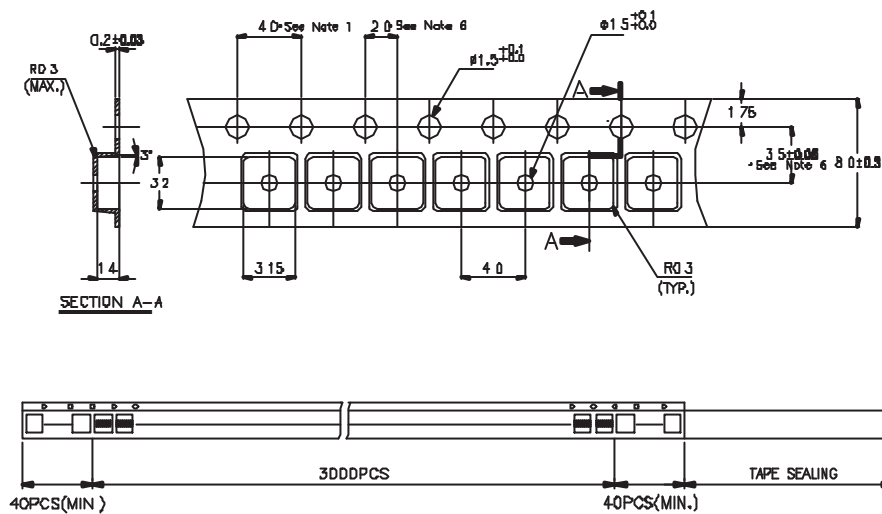


SYMBOL	MIN.	NOM.	MAX.
A	—	—	1.45
A1	—	—	0.15
A2	0.90	1.15	1.30
b	0.30	—	0.50
c	0.08	—	0.22
D	2.90 BSC.		
E	2.80 BSC.		
E1	1.60 BSC.		
e	0.95 BSC.		
e1	1.90 BSC.		
L	0.30	0.45	0.60
L1	0.60 REF.		
L2	0.25 BSC.		
R	0.10	—	—
R1	0.10	—	0.25
Ø	0°	4°	8°
Ø1	5°	10°	15°

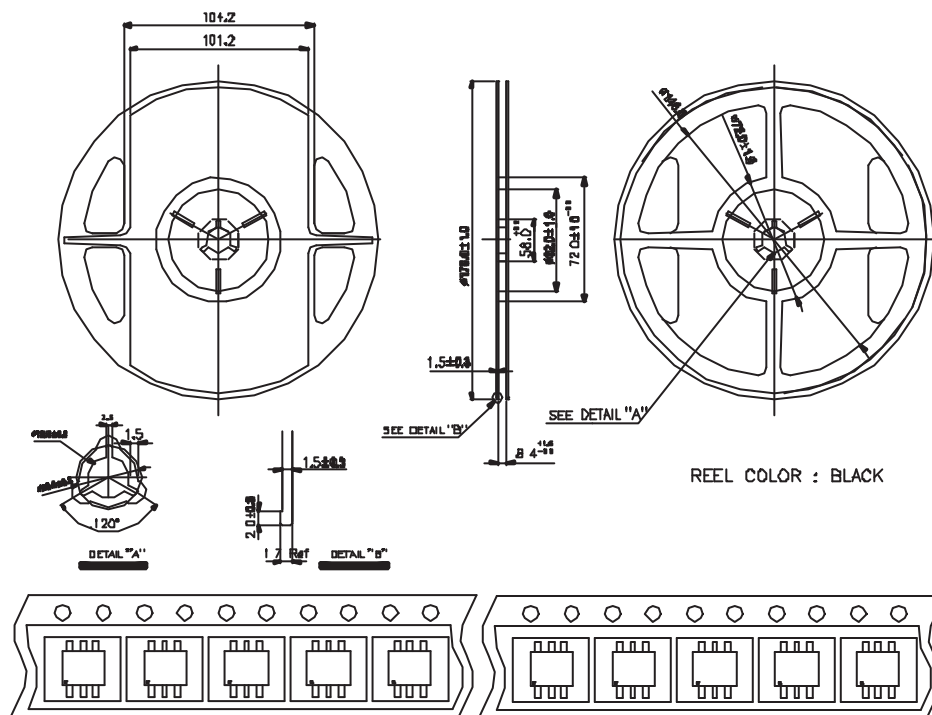
# STS 8205

## TSOP6 Tape and Reel Data

## TSOP6 Carrier Tape



## TSOP6 Reel



SOT-28