



POSEICO SPA

POwer SEmiconductors Italian COrporation

POSEICO SPA

Via N. Lorenzi 8, 16152 Genova - ITALY

Tel. ++ 39 010 6556234 - Fax ++ 39 010 6557519

Sales Office:

Tel. ++ 39 010 6556775 - Fax ++ 39 010 6442510

RECTIFIER DIODE**AR447PC**

Repetitive voltage up to

2400 V

Mean forward current

2395 A

Surge current

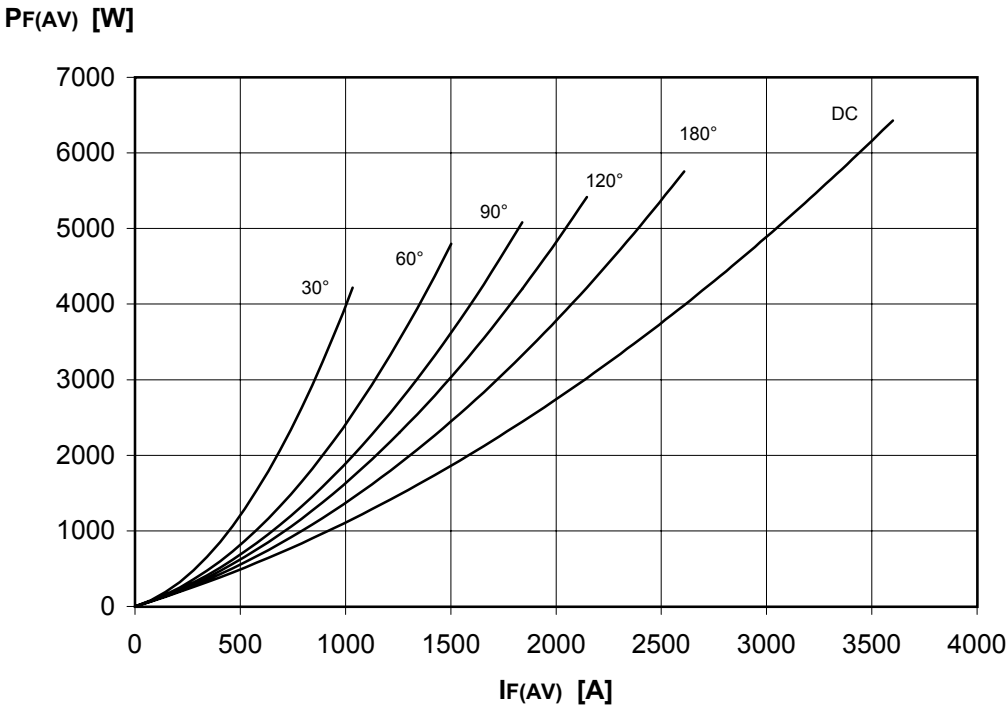
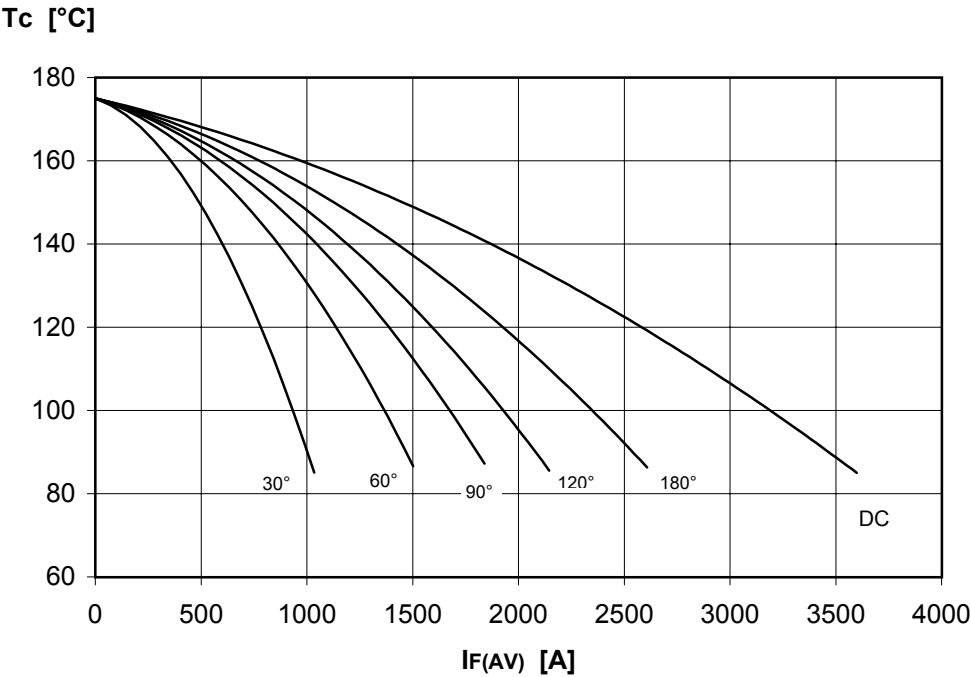
18 kA**TARGET SPECIFICATION**

lug 02 - ISSUE : 2

Symbol	Characteristic	Conditions	T _j [°C]	Value	Unit
BLOCKING					
V _{RRM}	Repetitive peak reverse voltage		175	2400	V
V _{RSM}	Non-repetitive peak reverse voltage		175	2500	V
I _{RRM}	Repetitive peak reverse current	V=VRRM	175	50	mA
CONDUCTING					
I _{F (AV)}	Mean forward current	180° sin, 50 Hz, Th=55°C, double side cooled		2395	A
I _{F (AV)}	Mean forward current	180° sin, 50 Hz, Tc=85°C, double side cooled		2570	A
I _{FSM}	Surge forward current	Sine wave, 10 ms without reverse voltage	175	18	kA
I ² t	I ² t			1620 x 1E3	A²s
V _{FM}	Forward voltage	Forward current = 1800 A	175	1.30	V
V _{F(TO)}	Threshold voltage		175	0.85	V
r _F	Forward slope resistance		175	0.260	mohm
SWITCHING					
t _{rr}	Reverse recovery time		175		µs
Q _{rr}	Reverse recovery charge				µC
I _{rr}	Peak reverse recovery current				A
MOUNTING					
R _{th(j-h)}	Thermal impedance, DC	Junction to heatsink, double side cooled		21	°C/kW
R _{th(c-h)}	Thermal impedance	Case to heatsink, double side cooled		7	°C/kW
T _j	Operating junction temperature			-30 / 175	°C
F	Mounting force			11.8 / 13.2	kN
	Mass			90	g
ORDERING INFORMATION : AR447PC S 24					
standard specification <input type="checkbox"/> <input type="checkbox"/> VRRM/100					

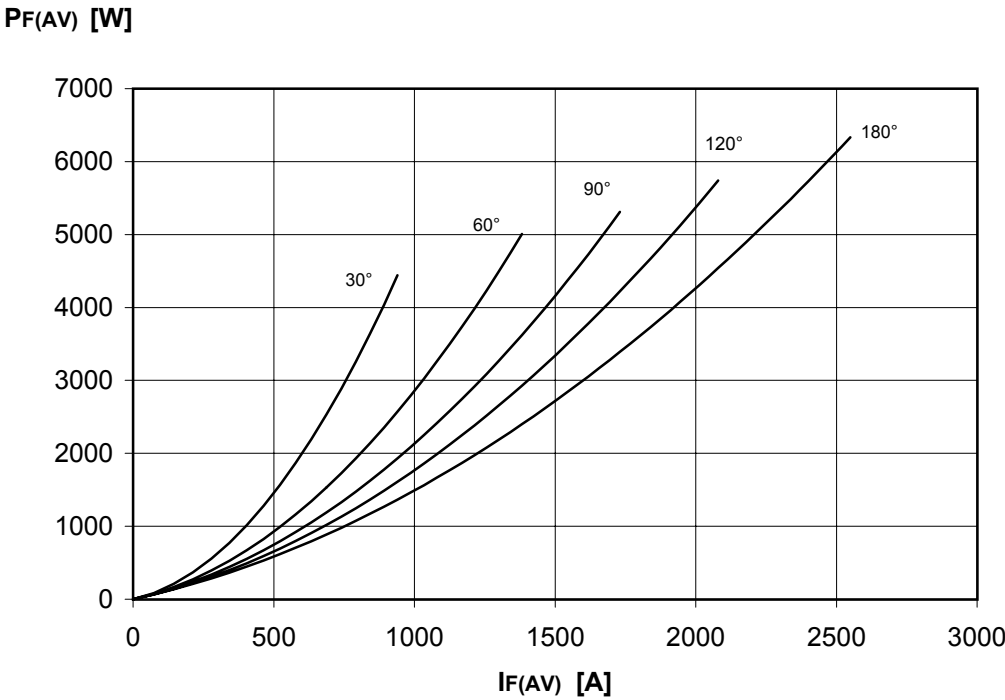
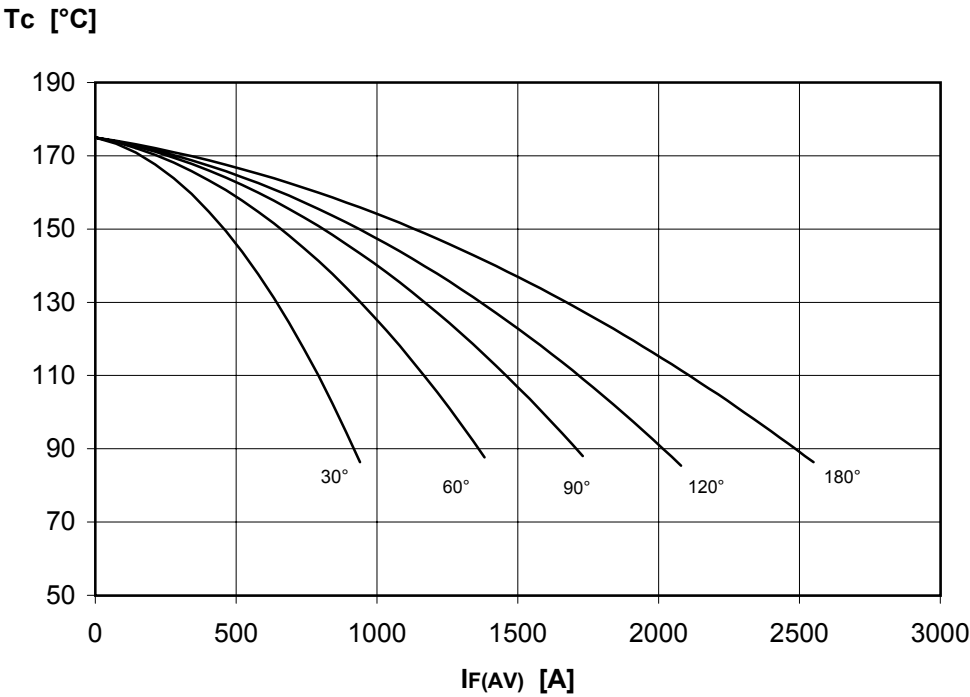
DISSIPATION CHARACTERISTICS

SQUARE WAVE



DISSIPATION CHARACTERISTICS

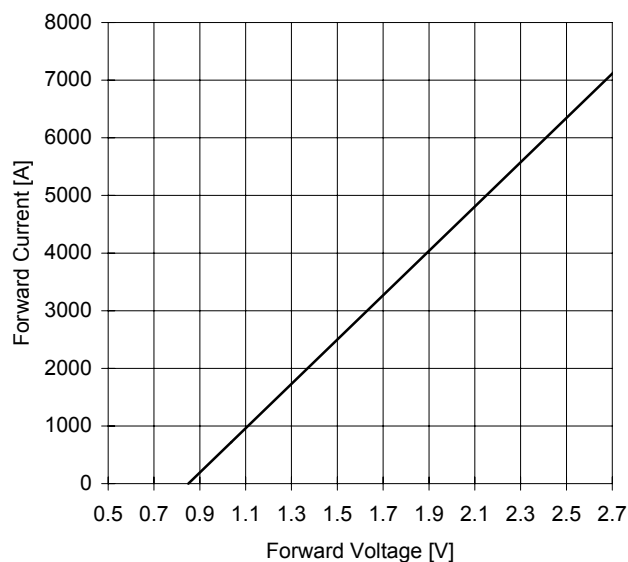
SINE WAVE



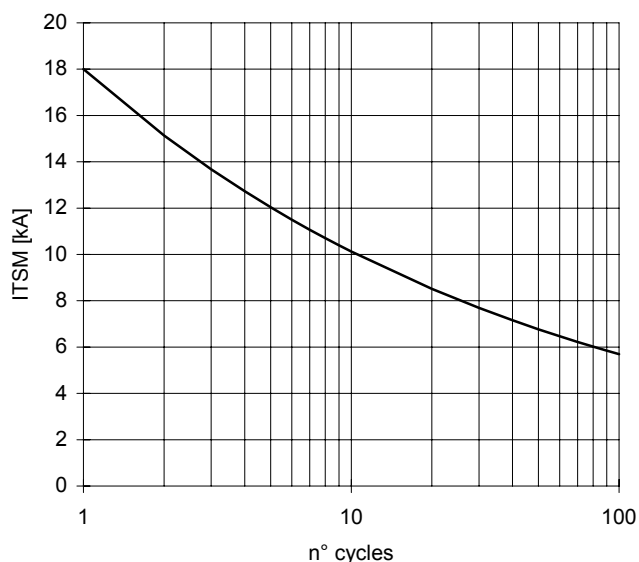
AR447PC RECTIFIER DIODE

TARGET SPECIFICATION lug 02 - ISSUE : 2

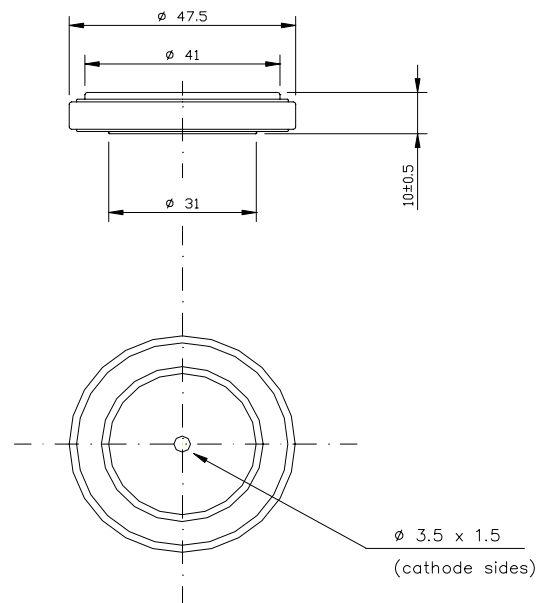
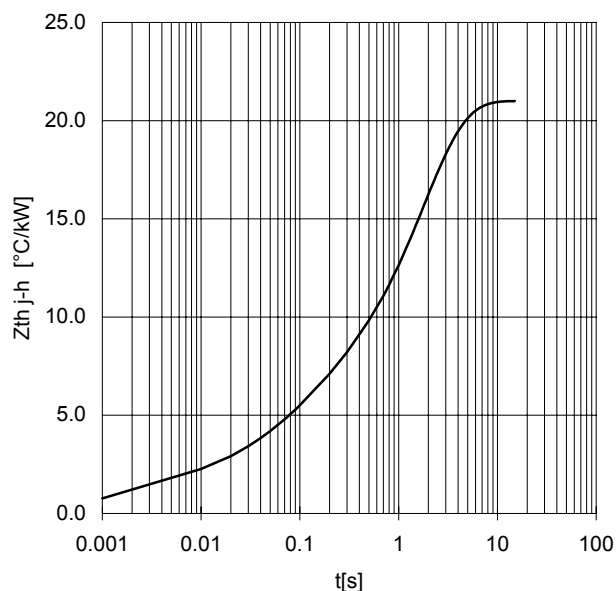
FORWARD CHARACTERISTIC
 $T_j = 175^\circ\text{C}$



SURGE CHARACTERISTIC
 $T_j = 175^\circ\text{C}$



TRANSIENT THERMAL IMPEDANCE
DOUBLE SIDE COOLED



Dimensions
in mm



PLASTIC CASE DEVICE

All the characteristics given in this data sheet are guaranteed only with uniform clamping force, cleaned and lubricated heatsink, surfaces with flatness $< .03 \text{ mm}$ and roughness $< 2 \text{ }\mu\text{m}$.

In the interest of product improvement POSEICO SPA reserves the right to change any data given in this data sheet at any time without previous notice.

If not stated otherwise the maximum value of ratings (symbols over shaded background) and characteristics is reported.

Distributed by

