

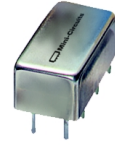
Plug-In

Power Splitter/Combiner

4 Way-0° 50Ω

1 to 800 MHz

PSC-4-5+
PSC-4-5



CASE STYLE: A01
PRICE: \$49.70 ea. QTY (1-9)

Maximum Ratings

Operating Temperature	-55°C to 100°C
Storage Temperature	-55°C to 100°C
Power Input (as a splitter)	.5W max.
Internal Dissipation	0.250W max.

Pin Connections

SUM PORT	4
PORT 1	7
PORT 2	8
PORT 3	1
PORT 4	2
GROUND	3,5,6
CASE GROUND	3,5,6

Features

- wideband, 1 to 800 MHz.
- low insertion loss, 0.6 dB typ.
- good isolation, 24 dB typ.
- rugged welded construction

Applications

- VHF/UHF
- communication systems
- instrumentation

+ RoHS compliant in accordance
with EU Directive (2002/95/EC)

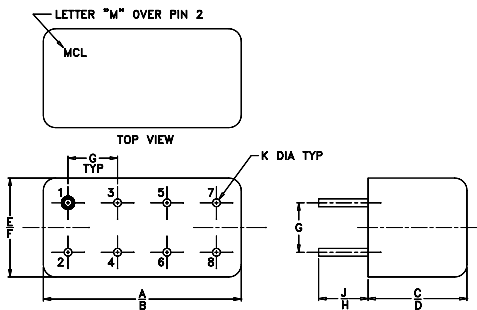
The + suffix identifies RoHS Compliance. See our web site
for RoHS Compliance methodologies and qualifications.

Splitter Electrical Specifications

FREQ. RANGE (MHz)	ISOLATION (dB)			INSERTION LOSS (dB) ABOVE 6 dB						PHASE UNBALANCE (Degrees)			AMPLITUDE UNBALANCE (dB)					
	L		M	U		L		M	U	L		M	U	L		M	U	
	Typ.	Min.	Typ.	Min.	Typ.	Min.	Typ.	Max.	Typ.	Max.	Typ.	Max.	Typ.	Max.	Typ.	Max.	Typ.	Max.
f _l -f _u	29	20	24	18	25	17	0.4	0.8	0.6	1.5	1.3	2.5	1	4	5	0.2	0.5	0.6

L = low range [f_L to 10 f_L] M = mid range [10 f_L to $f_U/2$] U = upper range [$f_U/2$ to f_U]

Outline Drawing



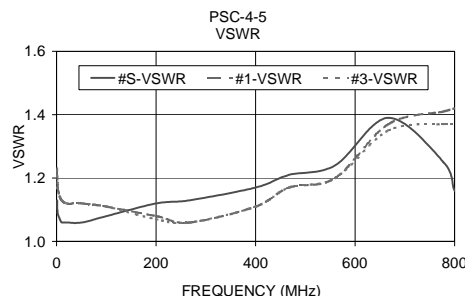
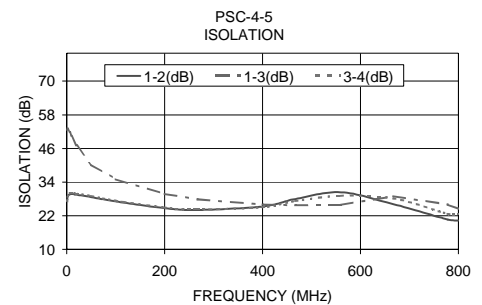
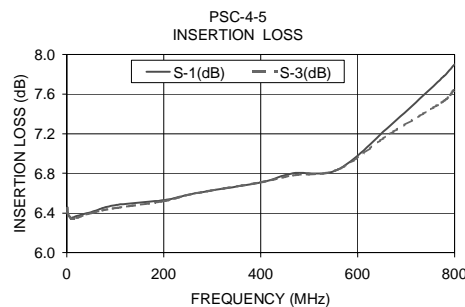
NOTE: BLUE BEAD INDICATES PIN 1.
PIN NUMBERS DO NOT APPEAR ON UNIT,
FOR REFERENCE ONLY.

Typical Performance Data

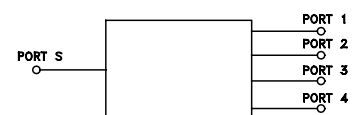
Freq. (MHz)	Insertion Loss (dB)				Amp. Unbal. (dB)	Isolation (dB)			VSWR				
	S-1	S-2	S-3	S-4		1-2	1-3	3-4	S	1	2	3	4
1.00	6.46	6.44	6.45	6.46	0.02	27.74	52.72	27.19	1.13	1.22	1.22	1.23	1.23
2.00	6.40	6.38	6.39	6.39	0.02	28.98	53.04	28.83	1.09	1.17	1.17	1.17	1.17
6.39	6.36	6.35	6.36	6.36	0.04	29.67	51.87	29.94	1.07	1.14	1.14	1.14	1.14
10.00	6.35	6.34	6.34	6.34	0.01	29.78	50.48	30.10	1.06	1.13	1.13	1.13	1.13
20.00	6.37	6.36	6.35	6.35	0.02	29.50	47.13	29.91	1.06	1.12	1.13	1.12	1.12
50.00	6.41	6.41	6.40	6.40	0.01	28.65	40.22	29.02	1.06	1.12	1.12	1.12	1.12
100.00	6.48	6.45	6.45	6.46	0.03	27.08	35.01	27.31	1.08	1.11	1.11	1.11	1.11
200.00	6.53	6.52	6.52	6.54	0.02	24.70	29.75	24.96	1.12	1.08	1.08	1.07	1.08
267.00	6.60	6.61	6.60	6.62	0.02	24.06	27.88	24.25	1.13	1.06	1.07	1.06	1.07
400.00	6.71	6.73	6.71	6.81	0.10	25.29	25.96	25.05	1.17	1.11	1.12	1.11	1.11
467.00	6.80	6.83	6.78	6.94	0.16	27.97	25.73	27.25	1.21	1.17	1.18	1.17	1.16
560.00	6.84	6.89	6.84	6.95	0.11	30.36	25.86	29.12	1.24	1.20	1.21	1.20	1.20
667.00	7.28	7.35	7.20	7.32	0.15	26.13	28.98	28.19	1.39	1.37	1.38	1.35	1.35
778.00	7.78	7.85	7.53	7.56	0.32	20.67	26.01	22.67	1.25	1.41	1.42	1.37	1.38
800.00	7.90	8.00	7.65	7.64	0.36	20.29	24.44	22.44	1.16	1.42	1.42	1.37	1.38

Outline Dimensions (inch/mm)

A	B	C	D	E	F
.770	.800	.385	.400	.370	.400
19.56	20.32	9.78	10.16	9.40	10.16
G	H	J	K	wt	
.200	.20	.14	.031	grams	
5.08	5.08	3.56	0.79	5.2	



electrical schematic



Mini-Circuits®

INTERNET <http://www.minicircuits.com>

P.O. Box 350166, Brooklyn, New York 11235-0003 (718) 934-4500 Fax (718) 332-4661

Distribution Centers NORTH AMERICA 800-654-7949 • 417-335-5935 • Fax 417-335-5945 • EUROPE 44-1252-832600 • Fax 44-1252-837010

Mini-Circuits ISO 9001 & ISO 14001 Certified

REV. A
M98898
PSC-4-5
HY/TD/CP
060711