

Plug-In

# Power Splitter/Combiner

PSC-2375

2 Way-0° 75Ω

55 to 85 MHz

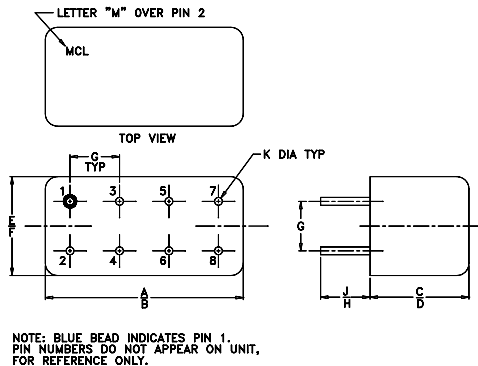
## Maximum Ratings

Operating Temperature	-55°C to 100°C
Storage Temperature	-55°C to 100°C
Power Input (as a splitter)	1W max.
Internal Dissipation	0.125W max.

## Pin Connections

SUM PORT	1
PORT 1	5
PORT 2	6
GROUND	2,3,4,7,8
CASE GROUND	2,3,4,7,8

## Outline Drawing



## Outline Dimensions (inch/mm)

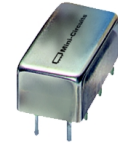
A	B	C	D	E	F
.770	.800	.385	.400	.370	.400
19.56	20.32	9.78	10.16	9.40	10.16
G	H	J	K	wt	
.200	.20	.14	.031	grams	
5.08	5.08	3.56	0.79	5.2	

## Features

- low insertion loss, 0.3 dB typ.
- excellent isolation, 35 dB typ.
- rugged welded construction

## Applications

- amateur radio
- defense & federal communication
- VHF



CASE STYLE: A01

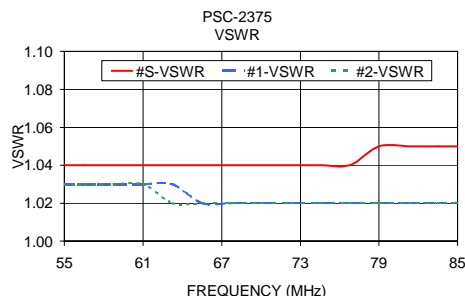
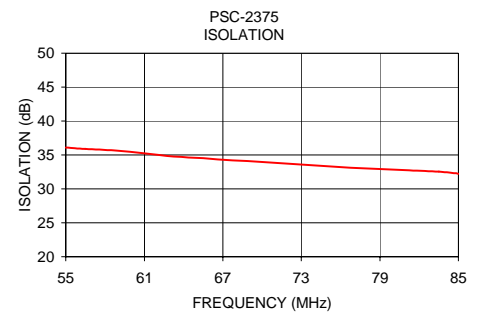
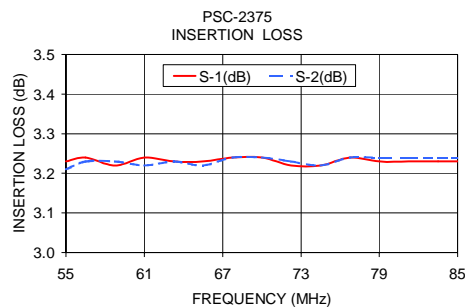
PRICE: \$28.20 ea. QTY (1-9)

## Splitter Electrical Specifications

FREQ. RANGE (MHz)	ISOLATION (dB)	INSERTION LOSS (dB) ABOVE 3.0 dB	PHASE UNBALANCE (Degrees)	AMPLITUDE UNBALANCE (dB)
$f_L$ - $f_U$	Typ. Min.	Typ. Max.	Max.	Max.
55-85	35 25	0.3 0.5	1.0	0.1

## Typical Performance Data

Frequency (MHz)	Insertion Loss (dB) S-1	Insertion Loss (dB) S-2	Amplitude Unbalance (dB)	Isolation (dB)	Phase Unbalance (deg.)	VSWR S	VSWR 1	VSWR 2
55.00	3.23	3.21	0.02	36.08	0.15	1.04	1.03	1.03
56.50	3.24	3.23	0.01	35.85	0.04	1.04	1.03	1.03
58.75	3.22	3.23	0.01	35.65	0.17	1.04	1.03	1.03
61.00	3.24	3.22	0.01	35.21	0.02	1.04	1.03	1.03
63.25	3.23	3.23	0.00	34.76	0.07	1.04	1.03	1.02
65.50	3.23	3.22	0.01	34.50	0.01	1.04	1.02	1.02
67.75	3.24	3.24	0.00	34.19	0.07	1.04	1.02	1.02
70.00	3.24	3.24	0.00	33.95	0.02	1.04	1.02	1.02
72.25	3.22	3.23	0.01	33.65	0.05	1.04	1.02	1.02
74.50	3.22	3.22	0.00	33.36	0.02	1.04	1.02	1.02
76.75	3.24	3.24	0.00	33.13	0.07	1.04	1.02	1.02
79.00	3.23	3.24	0.00	32.92	0.11	1.05	1.02	1.02
81.25	3.23	3.24	0.01	32.72	0.05	1.05	1.02	1.02
83.50	3.23	3.24	0.02	32.51	0.10	1.05	1.02	1.02
85.00	3.23	3.24	0.01	32.22	0.03	1.05	1.02	1.02



## electrical schematic



**Mini-Circuits®**

Distribution Centers NORTH AMERICA 800-654-7949 • 417-335-5935 • Fax 417-335-5945 • EUROPE 44-1252-832600 • Fax 44-1252-837010

Mini-Circuits ISO 9001 & ISO 14001 Certified

INTERNET <http://www.minicircuits.com>

P.O. Box 350166, Brooklyn, New York 11235-0003 (718) 934-4500 Fax (718) 332-4661

REV. OR  
M94175  
PSC-2375  
HY/TD/CP  
060711