

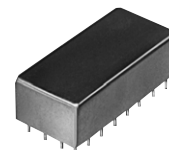
Plug-In

# Power Splitter/Combiner

12 Way-0° 50Ω

1 to 200 MHz

PSC-12-1+  
PSC-12-1



CASE STYLE: E10  
PRICE: \$93.45 ea. QTY (1-9)

+ RoHS compliant in accordance  
with EU Directive (2002/95/EC)

The + suffix identifies RoHS Compliance. See our web site  
for RoHS Compliance methodologies and qualifications.

## Maximum Ratings

Operating Temperature	-55°C to 100°C
Storage Temperature	-55°C to 100°C
Power Input (as a splitter)	1W max.
Internal Dissipation	0.87W max.

## Pin Connections

SUMPORT	5
PORT 1	7
PORT 2	8
PORT 3	1
PORT 4	2
PORT 5	31
PORT 6	32
PORT 7	25
PORT 8	26
PORT 9	22
PORT 10	30
PORT 11	19
PORT 12	27
GROUND	all other pins
CASE GROUND	3,6

## Features

- low insertion loss, 0.8 dB typ.
- good isolation, 27 dB typ.
- rugged, welded case

## Applications

- HF/VHF
- communication systems
- signal processing

## Splitter Electrical Specifications

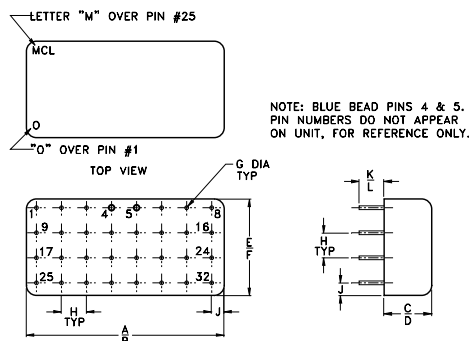
FREQ. RANGE (MHz)	ISOLATION (dB)						INSERTION LOSS (dB) ABOVE 10.8 dB						PHASE UNBALANCE (Degrees)			AMPLITUDE UNBALANCE (dB)		
	L		M		U		L		M		U		L	M	U	L	M	U
	Typ.	Min.	Typ.	Min.	Typ.	Min.	Typ.	Max.	Typ.	Max.	Typ.	Max.	Max.	Max.	Max.	Max.	Max.	Max.
f <sub>L</sub> -f <sub>U</sub>																		
1-200	35	30	27	20	21	18	0.5	0.8	0.8	1.2	1.0	1.4	4	8	16	0.2	0.4	0.7

L = low range [ $f_L$  to 10  $f_L$ ] M = mid range [10  $f_L$  to  $f_U/2$ ] U = upper range [ $f_U/2$  to  $f_U$ ]

## Typical Performance Data

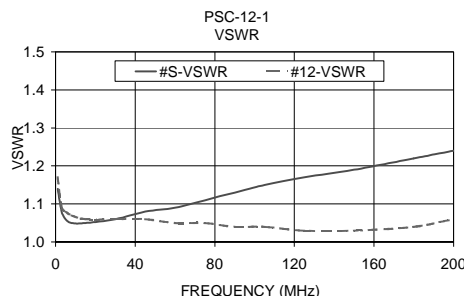
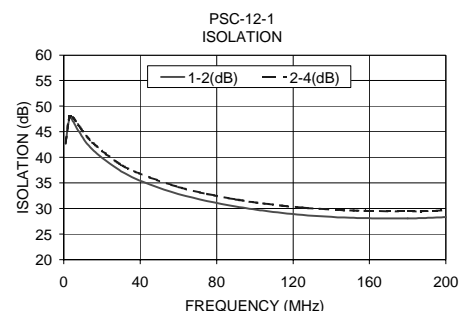
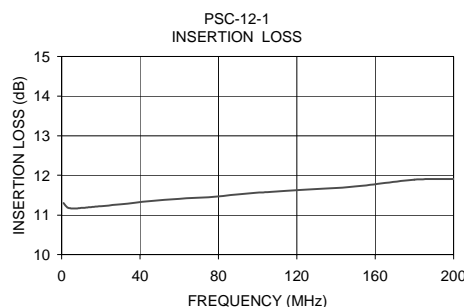
Frequency (MHz)	Insertion Loss (dB)	Amplitude Unbalance (dB)	Isolation (dB)		Phase Unbalance (deg.)	VSWR S	VSWR 12
			1-2	2-4			
1.00	11.30	0.16	42.68	42.83	0.40	1.14	1.17
3.00	11.19	0.14	47.69	47.94	0.18	1.08	1.09
5.00	11.17	0.14	46.95	47.73	0.14	1.06	1.08
8.00	11.17	0.13	45.01	46.14	0.23	1.05	1.07
15.00	11.20	0.14	41.53	42.92	0.40	1.05	1.06
30.00	11.27	0.13	37.29	38.55	0.67	1.06	1.06
45.00	11.35	0.14	34.70	36.08	0.97	1.08	1.06
60.00	11.41	0.14	32.86	34.20	1.42	1.09	1.05
75.00	11.45	0.14	31.48	32.85	1.65	1.11	1.05
90.00	11.52	0.16	30.40	31.78	1.96	1.13	1.04
105.00	11.58	0.14	29.57	30.96	2.21	1.15	1.04
125.00	11.64	0.15	28.75	30.17	2.68	1.17	1.03
150.00	11.72	0.14	28.20	29.63	3.19	1.19	1.03
180.00	11.89	0.18	28.08	29.45	3.99	1.22	1.04
200.00	11.91	0.21	28.33	29.66	4.45	1.24	1.06

## Outline Drawing



## Outline Dimensions (inch)

A	B	C	D	E	F	G
1.580	1.620	.380	.410	.770	.810	.030
40.13	41.15	9.65	10.41	19.56	20.57	0.76
H	J	K	L			
.200	.10	.20	.14			
5.08	2.54	5.08	3.56			
						wt
						grams
						23.0



## electrical schematic



**Mini-Circuits®**

Distribution Centers NORTH AMERICA 800-654-7949 • 417-335-5935 • Fax 417-335-5945 • EUROPE 44-1252-832600 • Fax 44-1252-837010

Mini-Circuits ISO 9001 & ISO 14001 Certified

INTERNET <http://www.minicircuits.com>

P.O. Box 350166, Brooklyn, New York 11235-0003 (718) 934-4500 Fax (718) 332-4661

REV. A  
M98898  
PSC-12-1  
HY/TD/CP/AM  
060711