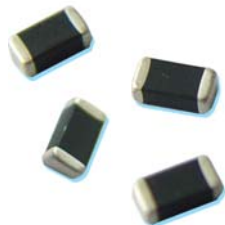
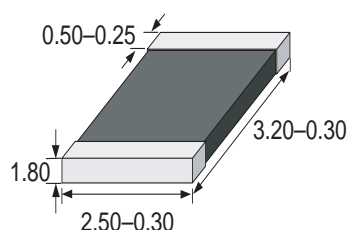


TVS 1210 SMD

This product is not recommended for new designs. Please refer to Littelfuse series MLA.

**Dimensions (mm)**

Multilayer Ceramic Transient Voltage Suppressor

Low Capacity

Features

Thin layer, high precise techniques
Lead free
Bi-directional clamping
Standard and low capacity
Available with Nickel/Tin end termination

Applications

Circuit board and ESD, EFT
Protection of:

- I/O ports
- Keyboards
- LCD's
- Sensors

WebLinks

Further info see:

www.wickmanngroup.com

Further technical info see technical varistor file:

www.wickmanngroup.com/download/techvaristor.pdf

Specifications**Packaging**

Tape and Reel
T 7 inch reel (2.000 pcs.)

Material

Body: Ceramic (ZnO)
Terminals: Ni/Sn plated (code "P")
Ag/Pt/Pd non plated (code "N" on request)

Operating Temperature

-55 to +125°C

Solderability

acc. to IEC 60068-2-58
235°C, 2s

Soldering Heat Resistance

260°C, 10 sec. (IEC 60068-2-58)
280°C, 5 sec. (IEC 60068-2-58)

Response Time

<0.5ns

Temperature coefficient (α_V) of clamping voltage (V_c) @ specified test current

<0.01%/°C

Power dissipation

0.15W max.

Standards

IEC 61000-4-2
MIL-STD-883C

Maximum Ratings (125°C)						Specifications (25°C)				
Type	max. cont. working voltage		max. non-repetitive surge current (8/20 μ s)	max. non-repetitive surge energy (10/1000 μ s)	max. clamping voltage at spec. current (8/20 μ s)	nominal voltage at 1mA (DC) test current		typ. capacitance		typ. inductance
	$V_{M(DC)}$ (V)	$V_{M(AC)}$ (V)	I_{TM} (A)	W_{TM} (J)	V_c (V@A)	$V_{N(DC)min.}$ (V)	$V_{N(DC)max.}$ (V)	1KHz $C_{typ.}$ (pF)	1MHz $C_{typ.}$ (pF)	$L_{typ.}$ (nH)
WT1210ML180L	18,0	14,0	200	1,50	38,0 @ 10	22,0	28,0	1900	1660	1,8
WT1210ML300L	30,0	25,0	200	0,90	65,0 @ 10	35,0	43,0	720	630	1,8
WT1210ML450L	45,0	35,0	220	0,90	90,0 @ 10	50,0	61,0	380	315	1,8

Order Information

Qty.	Order-Number	Type	Terminal Code	Packaging
		WT1210ML180	L	P
				T

Specifications are subject to change without notice

WebSite

050915 www.wickmanngroup.com E-mail: sales@wickmann.com

Europe Tel: +49 2302 662-107

Americas Tel: +1 404 699-7820

E-mail: service@wickmannusa.com

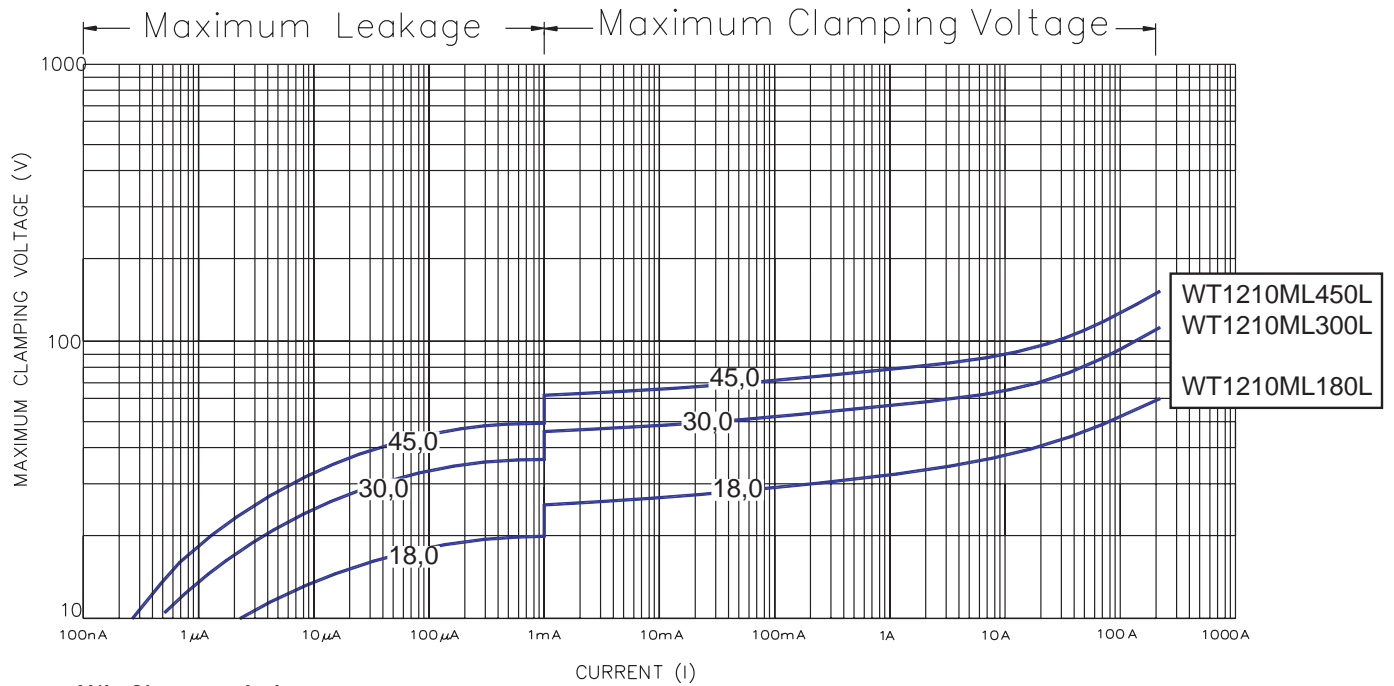
Asia Tel: +852 26 14-1108

E-mail: sales@wickmann.com.hk

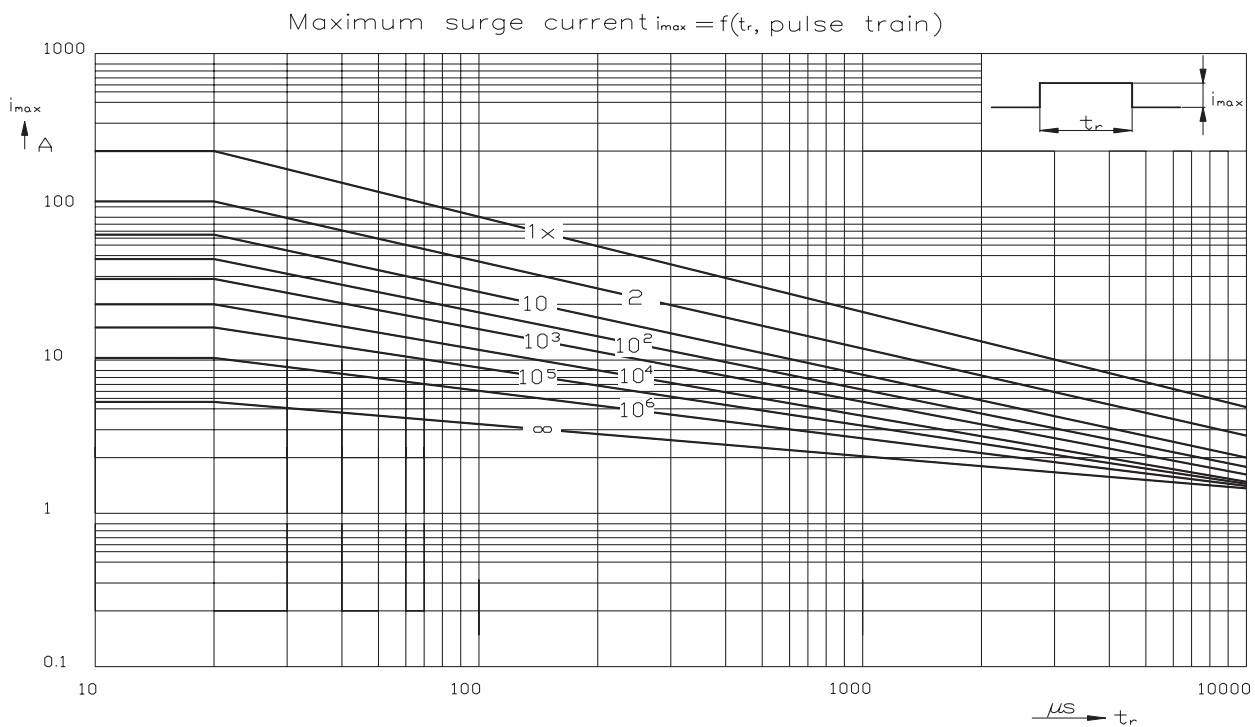
China Tel: +86 21 6432 5146

E-mail: sales@wickmann.com

TVS 1210 SMD



V/I Characteristics



Maximum Surge Current: WT1210ML180L - WT1210ML300L

TVS 1210 SMD

