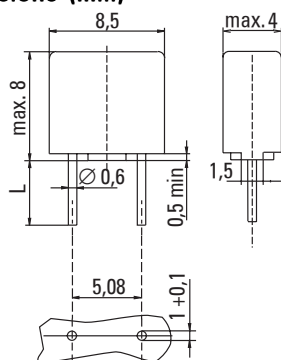


No. 396 / TE5®



Dimensions (mm)



Holes in PCB
Long Leads (L=18.8 mm)
Short Leads (L=4.3 mm)

Limits for Pre-arcing Time

| | |
|------------------|------------------|
| Rated Current | $2.0 \times I_N$ |
| 50 mA ... 6.30 A | < 60 s |

UL 248-14, 125 V, T
LeadfreeTime-Current Characteristic
Time Lag (T)

Standard

UL 248-14
CSA C22.2 No. 248.14

Approvals

UL Listed
cUL Listed
METI-PSE
CCCe for China Import

Features

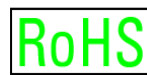
Leadfree
Reduced PCB space requirements
Direct solderable or plug-in versions
Internationally approved
Low internal resistance
Shocksafe casing
Vibration resistant
halogen free

WebLinks

Further info see:
www.wickmanngroup.com

Further application infos see
Fuseology:

www.wickmanngroup.com/download/fuseology.pdf



Specifications

Packaging

000: Tape/Ammopack (1400 pcs.)
044: Short Leads - Bulk (1400 pcs.)

Materials

Base/Cap: Brown Thermoplastic
Polyamide PA 6.6, UL 94V0
Round Pins: Copper, Sn plated

Operating Temperature

-40 °C to +85 °C (consider de-rating)

Climatic Category

-40 °C/+85 °C/21 days
(EN 60068-1,-2-1,-2-2,-78)

Stock Conditions

+10 °C to +60 °C
relative humidity ≤ 75 % yearly average,
without dew, maximum value for 30 days -95 %

Vibration Resistance

24 cycles at 15 min. each (IEC 60068-6)
10 - 60 Hz at 0.75 mm amplitude
60 - 2000 Hz at 10 g acceleration

Lead Pull Strength

10 N (IEC 60068-2-21)

Solderability

260 °C, ≤ 3 s (Wave)
350 °C, ≤ 3 s (Soldering Iron)

Soldering Heat Resistance

260 °C, 10 s (IEC 60068-2-20)

Marking

Ⓢ, T, Current Rating, Approvals

Unit Weight

0.60 g (approx.)

CCCe

Permissible continuous operating current is ≤ 70 % at ambient temperature of 23 °C (73.4 °F).

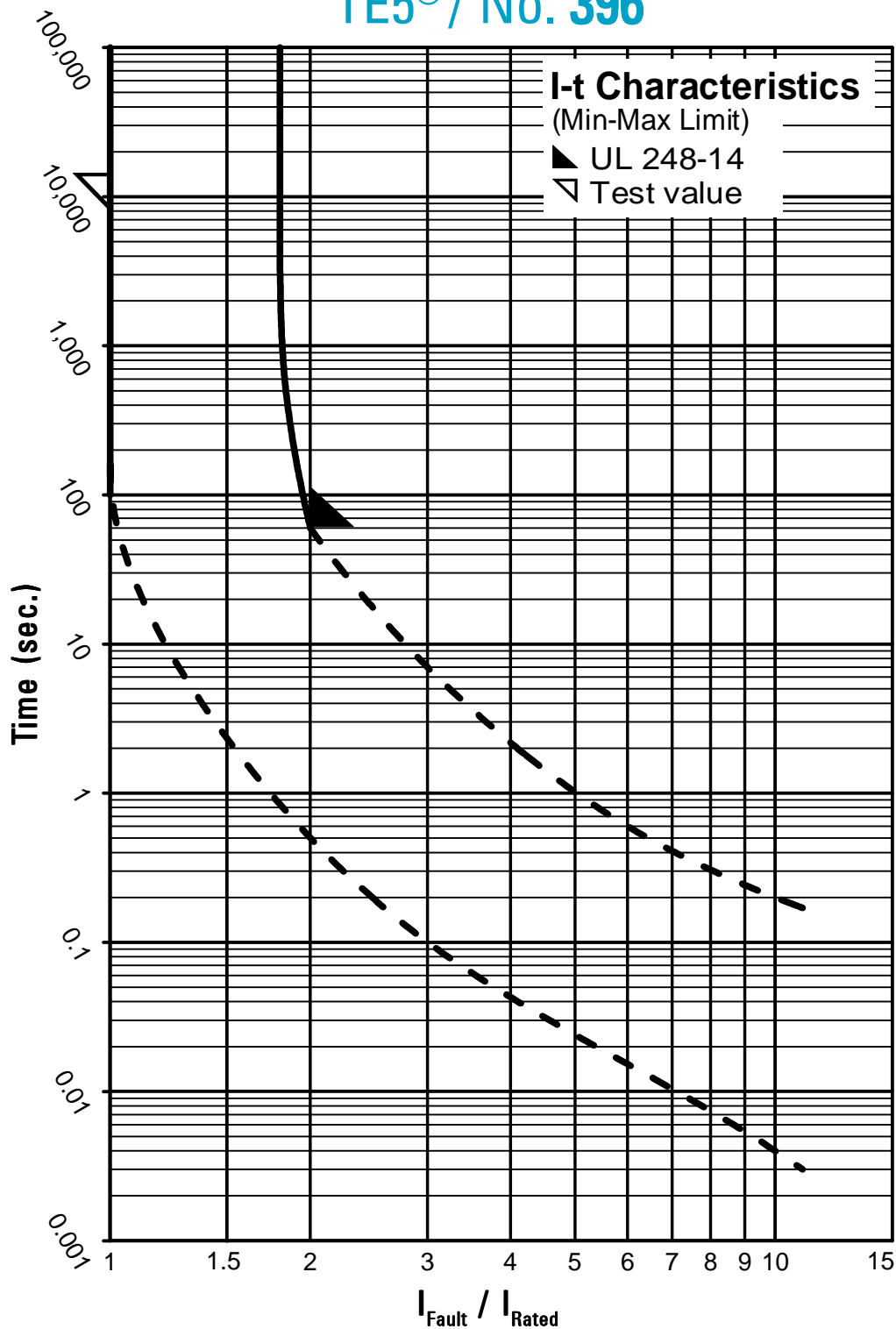
| Rated Current | Amp Code | Voltage Rating | Breaking Capacity | Voltage Drop $1.0 \times I_N$ Ⓢ max. (mV) | Power Dissipation $1.0 \times I_N$ Ⓢ max. (mW) | Melting Integral $10 \times I_N$ Ⓢ min. (A²s) | Approvals UL cUL METI-PSE CCCe |
|--------------------|----------|----------------|-------------------|---|--|---|-----------------------------------|
| 50mA | 0050 | 125V | | 900 | 45 | 0.0056 | • • • • |
| 63mA | 0063 | 125V | | 800 | 50 | 0.009 | • • • • |
| 80mA | 0080 | 125V | | 700 | 55 | 0.014 | • • • • |
| 100mA | 0100 | 125V | | 600 | 60 | 0.025 | • • • • |
| 125mA | 0125 | 125V | | 550 | 70 | 0.044 | • • • • |
| 160mA | 0160 | 125V | | 480 | 80 | 0.058 | • • • • |
| 200mA | 0200 | 125V | | 390 | 80 | 0.1 | • • • • |
| 250mA | 0250 | 125V | | 350 | 90 | 0.17 | • • • • |
| 315mA | 0315 | 125V | | 300 | 95 | 0.26 | • • • • |
| 400mA | 0400 | 125V | 100A / 125 V AC | 250 | 100 | 0.32 | • • • • |
| 500mA | 0500 | 125V | 50-60 Hz | 220 | 110 | 0.58 | • • • • |
| 630mA | 0630 | 125V | cos φ = 1.0 | 210 | 135 | 0.75 | • • • • |
| 800mA | 0800 | 125V | | 160 | 130 | 0.98 | • • • • |
| 1.00A | 1100 | 125V | | 155 | 155 | 2.2 | • • • • |
| 1.25A | 1125 | 125V | | 145 | 185 | 3.8 | • • • • |
| 1.60A | 1160 | 125V | | 130 | 210 | 5.2 | • • • • |
| 2.00A ¹ | 1200 | 125V | | 125 | 250 | 7.5 | • • • • |
| 2.50A ¹ | 1250 | 125V | | 120 | 300 | 14 | • • • • |
| 3.15A ¹ | 1315 | 125V | | 110 | 350 | 22 | • • • • |
| 4.00A | 1400 | 125V | | 110 | 400 | 27 | • • • • |
| 5.00A | 1500 | 125V | | 95 | 475 | 59 | • • • • |
| 6.30A | 1630 | 125V | | 95 | 570 | 100 | • • • • |

Order
Information

| Qty. | Order- Number | Series | Amp Code | Packaging |
|------|------------------|--------|----------|-----------|
| | | 396 | | |

Specifications are subject
to change without notice

TE5® / No. 396



Contact WICKMANN for individual I-t curves