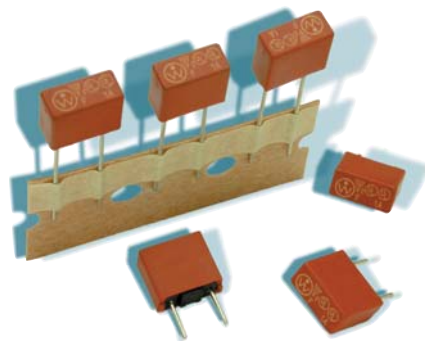


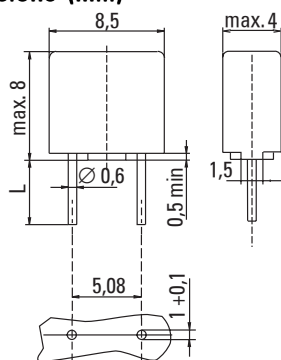
## No. 395 / TE5®

## UL 248-14, 125 V, F

## Specifications



## Dimensions (mm)



Long Leads (L=18.8 mm)  
Short Leads (L=4.3 mm)

## Time-Current Characteristic

Quick Acting (F)

## Standard

UL 248-14

CSA C22.2 No. 248.14

## Approvals

UL Listed

cUL Listed

METI-PSE

## Features

Reduced PCB space requirements  
Direct solderable or plug-in versions  
Internationally approved  
Low internal resistance  
Shocksafe casing  
Vibration resistant  
Halogen free  
CCCe for China import

## WebLinks

## Further infos see:

[www.wickmanngroup.com](http://www.wickmanngroup.com)

## Further application infos see

## Fuseology:

[www.wickmanngroup.com/download/fuseology.pdf](http://www.wickmanngroup.com/download/fuseology.pdf)

## Packaging

000: Tape/Ammopack (1400 pcs.)

044: Short Leads - Bulk (1400 pcs.)

## Materials

Base/Cap: Brown Thermoplastic

Polyamide PA 6.6, UL 94V0

Round Pins: Copper, Sn plated

## Operating Temperature

-40 °C to +85 °C (consider de-rating)

## Climatic Category

-40 °C/+85 °C/21 days

(EN 60068-1,-2-1,-2-2,-2-78)

## Stock Conditions

+10 °C to +60 °C

relative humidity ≤ 75 % yearly average,

without dew, maximum value for 30 days - 95 %

## Vibration Resistance

24 cycles at 15 min. each (EN 60068-6)

10 - 60 Hz at 0.75 mm amplitude

60 - 2000 Hz at 10 g acceleration

## Lead Pull Strength

10 N (IEC 60068-2-21)

## Solderability

260 °C, ≤ 3 s (Wave)

350 °C, ≤ 3 s (Soldering iron)

## Soldering Heat Resistance

260 °C, 10 s (IEC 60068-2-20)

## Marking

Ⓢ, F, Current Rating, Approvals

## Unit Weight

0.60 g (approx.)

CCCe

## Limits for Pre-arcing Time

Rated Current	$2.0 \times I_N$	$2.0 \times I_N$ Ⓢ
50 mA ... 6.30 A	< 60 s	< 5 s



Permissible continuous operating current is ≤ 70 % at ambient temperature of 23 °C (73.4 °F).

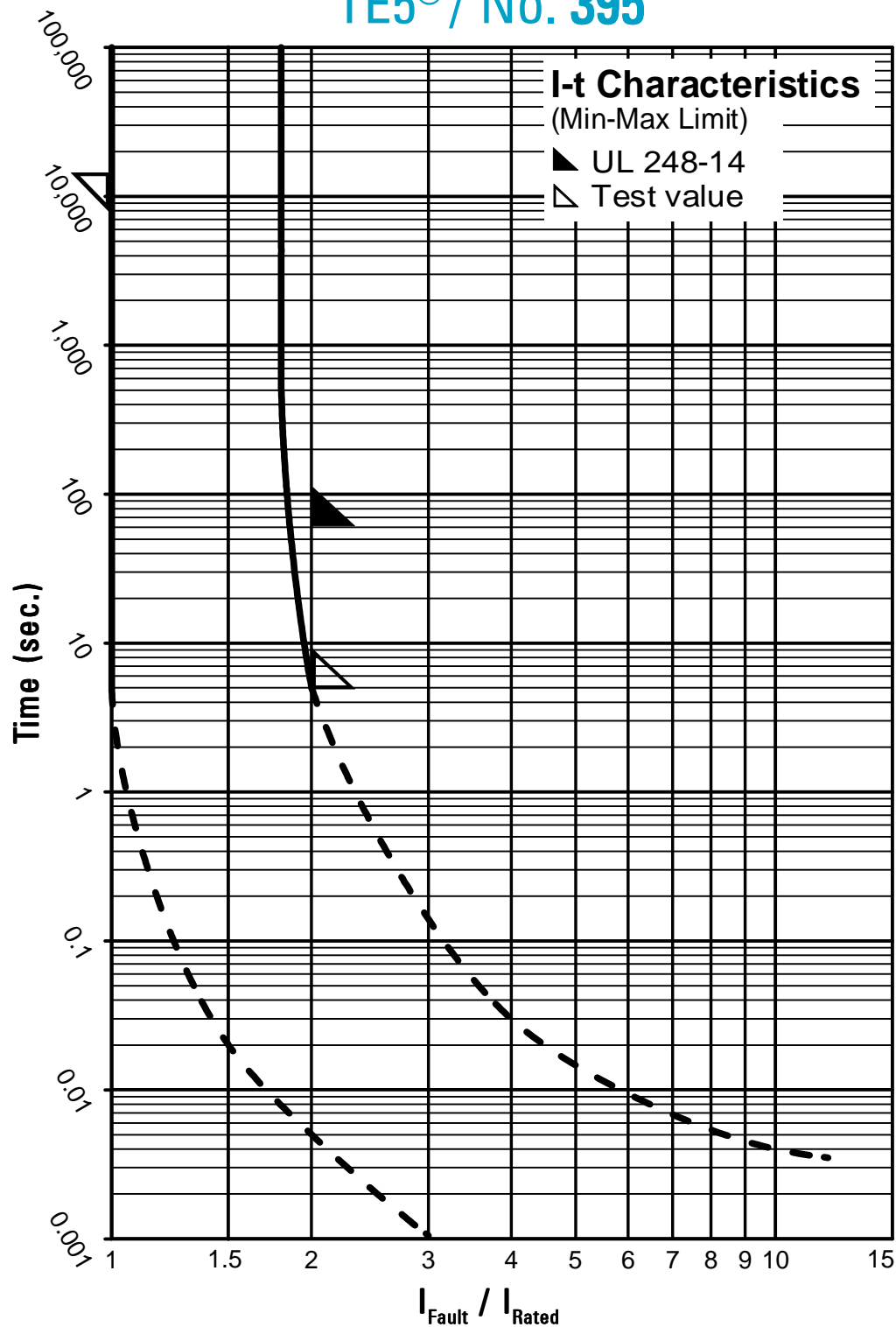
Rated Current	Amp Code	Voltage Rating	Breaking Capacity	Voltage Drop $1.0 \times I_N$ Ⓢ max. (mV)	Power Dissipation $1.0 \times I_N$ Ⓢ max. (mW)	Melting Integral $10 \times I_N$ Ⓢ max. (A²s)	Approvals UL cUL METI-PSE	CCCe
50mA	0050	125V		1600	85	0.0001	• •	•
63mA	0063	125V		1300	85	0.00013	• •	•
80mA	0080	125V		1200	100	0.0002	• •	•
100mA	0100	125V		1100	110	0.0013	• •	•
125mA	0125	125V		1350	160	0.0019	• •	•
160mA	0160	125V		1000	150	0.0037	• •	•
200mA	0200	125V		950	210	0.0075	• •	•
250mA	0250	125V		900	225	0.013	• •	•
315mA	0315	125V		800	255	0.026	• •	•
400mA	0400	125V	100A/125VAC	230	95	0.015	• •	•
500mA	0500	125V	50-60Hz	220	110	0.025	• •	•
630mA	0630	125V	cos φ = 1.0	210	135	0.045	• •	•
800mA	0800	125V		200	160	0.068	• •	•
1.00A	1100	125V		190	190	0.13	• • •	•
1.25A	1125	125V		180	225	0.2	• • •	•
1.60A	1160	125V		170	275	0.39	• • •	•
2.00A	1200	125V		160	450	0.53	• • •	•
2.50A	1250	125V		150	375	1.1	• • •	•
3.15A	1315	125V		140	445	1.9	• • •	•
4.00A	1400	125V		130	520	3.2	• • •	•
5.00A	1500	125V		120	600	6.1	• • •	•
6.30A	1630	125V		115	850	9.7	• •	•

## Order Information

Qty.	Order-Number	Series	Amp Code	Packaging
		395		

Specifications are subject  
to change without notice

## TE5® / No. 395



Contact WICKMANN for individual I-t curves