

### Model name

## EWS 1500T-5

Name of series      Output power      Nominal output voltage

### Features

- Compact size/3 phase-3 wire/High power  
Input: 3 $\phi$ 200V, Power factor: 0.95
- Output voltage programmable:  
0V to nominal output voltage by external control.  
Voltage adjustable range:  $\pm 20\%$
- Load current sharing
- Open phase detector
- 3 year warranty

### Specifications

1. Input voltage range	3 phases-3 wire 170 ~ 265VAC (47 ~ 63 Hz)
2. Power factor	0.95 (typ) 200VAC at full load
3. Output voltage range	$\pm 20\%$ (2V, 3.3V: $-10 \sim +20\%$ ), 0V to nominal output voltage x 120% by external control
4. Cooling	Forced air cooling by internal fan
5. Operating ambient temperature	$-10 \sim +60^{\circ}\text{C}$ (Standard mounting) Output derating: 70% at $-10^{\circ}\text{C}$ , 100% at $0 \sim +50^{\circ}\text{C}$ , 70% at $+60^{\circ}\text{C}$
6. Withstand voltage	Input-output: 2.5kVAC, Output-chassis: 2.5kVAC, Output-chassis: 500VAC for 1 min.
7. Safety standard	Conforms to UL and CSA
8. Functions	Over voltage protection, Over current protection, Thermal protection, Remote sensing Remote on/off control, Power failure signal, Output current balancing

### Product lineup

Model name		Nominal output voltage	Max. output current	Max. DC output power	UL	CSA
EWS1500T	EWS1500T-2	2V	300A	600W	Δ	Δ
	EWS1500T-3.3	3.3V	300A	990W	Δ	Δ
	EWS1500T-5	5V	300A	1500W	Δ	Δ
	EWS1500T-10	10V	150A	1500W	Δ	Δ
	EWS1500T-12	12V	125A	1500W	Δ	Δ
	EWS1500T-15	15V	100A	1500W	Δ	Δ
	EWS1500T-24	24V	63A	1512W	Δ	Δ
	EWS1500T-36	36V	42A	1512W	Δ	Δ
EWS1500T-48	48V	32A	1536W	Δ	Δ	
EWS3000T	EWS3000T-2	2V	600A	1200W	Δ	Δ
	EWS3000T-3.3	3.3V	600A	1980W	Δ	Δ
	EWS3000T-5	5V	600A	3000W	Δ	Δ
	EWS3000T-10	10V	300A	3000W	Δ	Δ
	EWS3000T-12	12V	250A	3000W	Δ	Δ
	EWS3000T-15	15V	200A	3000W	Δ	Δ
	EWS3000T-24	24V	125A	3000W	Δ	Δ
	EWS3000T-36	36V	84A	3024W	Δ	Δ
EWS3000T-48	48V	63A	3024W	Δ	○	
EWS5000T	EWS5000T-2	2V	1000A	2000W	Δ	Δ
	EWS5000T-3.3	3.3V	1000A	3300W	Δ	Δ
	EWS5000T-5	5V	1000A	5000W	Δ	Δ

- Request customer specification for further details of specifications, outline, characteristics, etc.  
Read the instruction manual before usage.
- Contact us about delivery before ordering.

- : Safety standard approved
- $\Delta$  : Conforms to safety standard

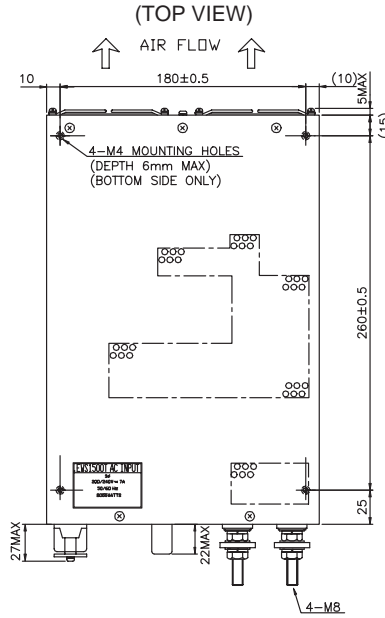
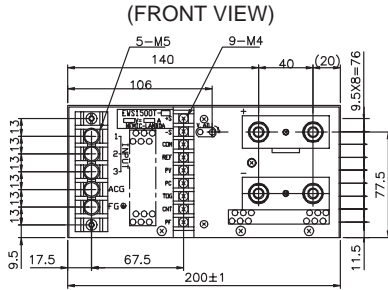
# EWS-T-SERIES

**LAMBDA**  
DENSEI-LAMBDA

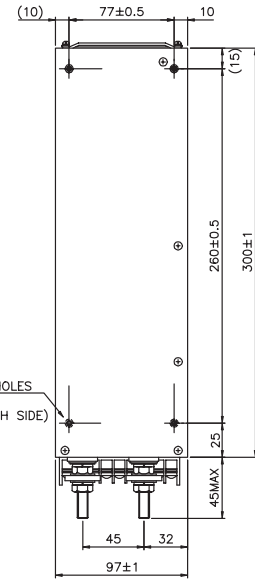
## ■ EWS1500T

● Recommended Noise Filter

MB1310



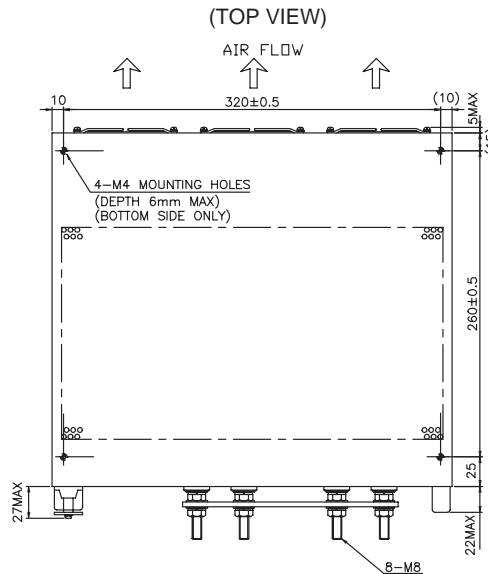
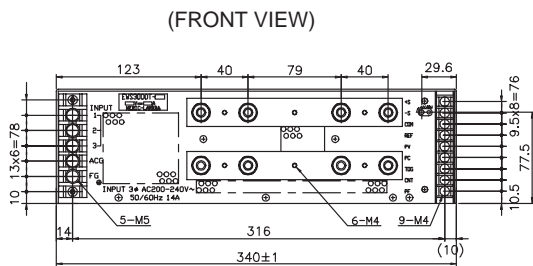
(RIGHT SIDE VIEW)



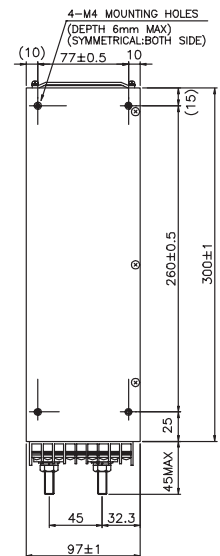
## ■ EWS3000T

● Recommended Noise Filter

MB1320



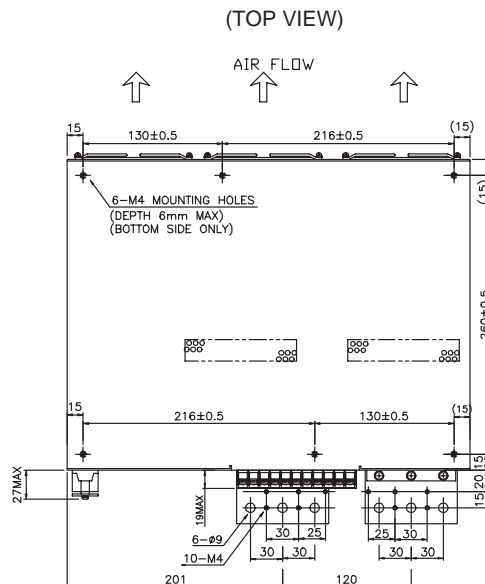
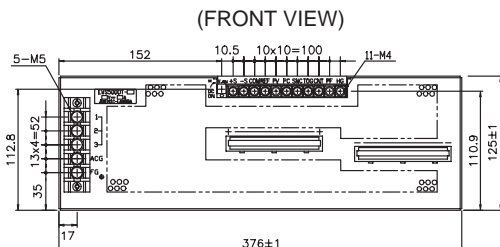
(RIGHT SIDE VIEW)



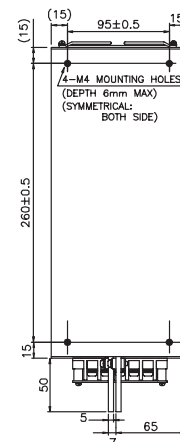
## ■ EWS5000T

● Recommended Noise Filter

MB1330



(RIGHT SIDE VIEW)



(Unit: mm)