

### Model name

## DSR 50-5-24

Name of series    Output power: 30W, 50W, 180W    Output voltage: 5 ~ 48V    Input voltage: 24: 18 ~ 32VDC, 48: 32 ~ 63VDC

### Features

- Long life and high reliability  
Over 10 years lifetime at 40°C, full load  
Vibration: 5G max.
- Wide operating temperature range: -20 ~ +71°C
- Input voltage range  
DC24V input: DC18 ~ 32V, 48V input: 32 ~ 63V
- Wide variation  
DC24V input: 17 models, 30/50/180W  
DC48V input: 12 models, 30/50W
- 5 year warranty

### Specifications

1. Input voltage range	DC 24V input: DC 18 ~ 32V DC 48V input: DC 32 ~ 63V
2. Output voltage range	-10% ~ +20%
3. Line regulation	0.4% (DC18 ~ 32V/DC32 ~ 63V, at constant load)
4. Load regulation	0.8% (No load – full load, at constant input voltage)
5. Cooling	Convection cooling
6. Operating ambient temperature (Standard mounting)	-20 ~ +71°C (+61 ~ +70°C: Forced Air Cooling) -20°C: 50%, 0 ~ +50°C: 100%, +60°C: 70%, +71°C: 50%
7. Withstand voltage	Input-output: 1.5kVAC, input-FG: 1.5kVAC, output-FG: 500VAC for 1 min. (DSR180... Input/output-FG: 2.5kVAC, output-FG: 500VAC for 1 min.)
8. Vibration	When not operating 10 ~ 55Hz, amplitude 0.825mm constant (MAX. 5G), Sweep for 1 min., X, Y and Z axes for 1 hour
9. Functions	Over voltage protection, Over current protection, Thermal protection, Remote on/off control Low input protection, Power failure (Low output voltage detection signal) DSR180: Remote sensing, Output current balancing, Switching frequency synchronization Output voltage programmable by external control

### Product lineup

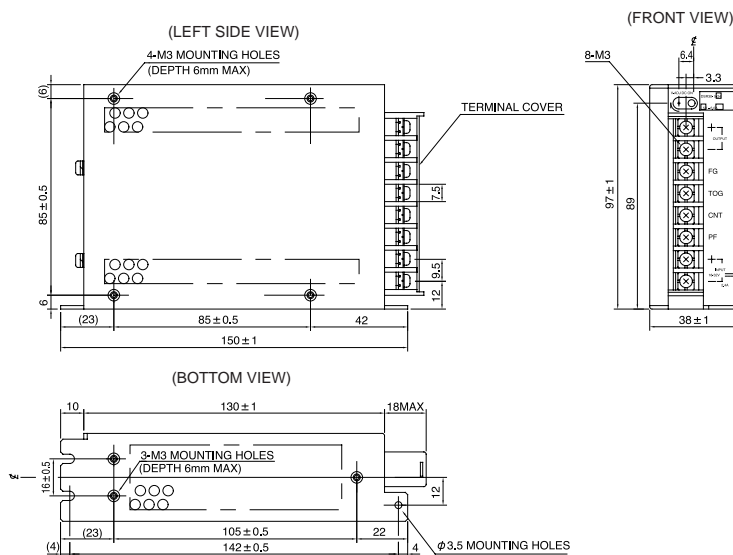
Model name		Nominal output voltage	Max. output current	Max. output power	UL	CSA
DSR30	DSR30-5-24	5V	6.0A	30.0W	Δ	Δ
	DSR30-12-24	12V	2.5A	30.0W	Δ	Δ
	DSR30-15-24	15V	2.0A	30.0W	Δ	Δ
	DSR30-24-24	24V	1.3A	31.2W	Δ	Δ
	DSR30-40-24	40V	0.8A	32.0W	Δ	Δ
	DSR30-48-24	48V	0.7A	33.6W	Δ	Δ
	DSR30-5-48	5V	6.0A	30.0W	Δ	Δ
	DSR30-12-48	12V	2.5A	30.0W	Δ	Δ
	DSR30-15-48	15V	2.0A	30.0W	Δ	Δ
	DSR30-24-48	24V	1.3A	31.2W	Δ	Δ
DSR30-40-48	40V	0.8A	32.0W	Δ	Δ	
DSR30-48-48	48V	0.7A	33.6W	Δ	Δ	

Model name		Nominal output voltage	Max. output current	Max. output power	UL	CSA
DSR50	DSR50-5-24	5V	10.0A	50.0W	Δ	Δ
	DSR50-12-24	12V	4.3A	51.6W	Δ	Δ
	DSR50-15-24	15V	3.4A	51.0W	Δ	Δ
	DSR50-24-24	24V	2.1A	50.4W	Δ	Δ
	DSR50-40-24	40V	1.3A	52.0W	Δ	Δ
	DSR50-48-24	48V	1.1A	52.8W	Δ	Δ
	DSR50-5-48	5V	10.0A	50.0W	Δ	Δ
	DSR50-12-48	12V	4.3A	51.6W	Δ	Δ
	DSR50-15-48	15V	3.4A	51.0W	Δ	Δ
	DSR50-24-48	24V	2.1A	50.4W	Δ	Δ
DSR180	DSR50-40-48	40V	1.3A	52.0W	Δ	Δ
	DSR50-48-48	48V	1.1A	52.8W	Δ	Δ
	DSR180-5-24	5V	36A	180W	Δ	Δ
	DSR180-6-24	6V	30A	180W	Δ	Δ
	DSR180-12-14	12V	15A	180W	Δ	Δ
	DSR180-24-24	24V	7.5A	180W	Δ	Δ
	DSR180-48-24	48V	3.7A	177.6W	Δ	Δ

- Request customer specification for further details of specifications, outline, characteristics, etc.  
Read the instruction manual before usage.
- Contact us about delivery before ordering.

Δ : Conforms to safety standard

■ **DSR30**



### ●Recommended Noise Filter



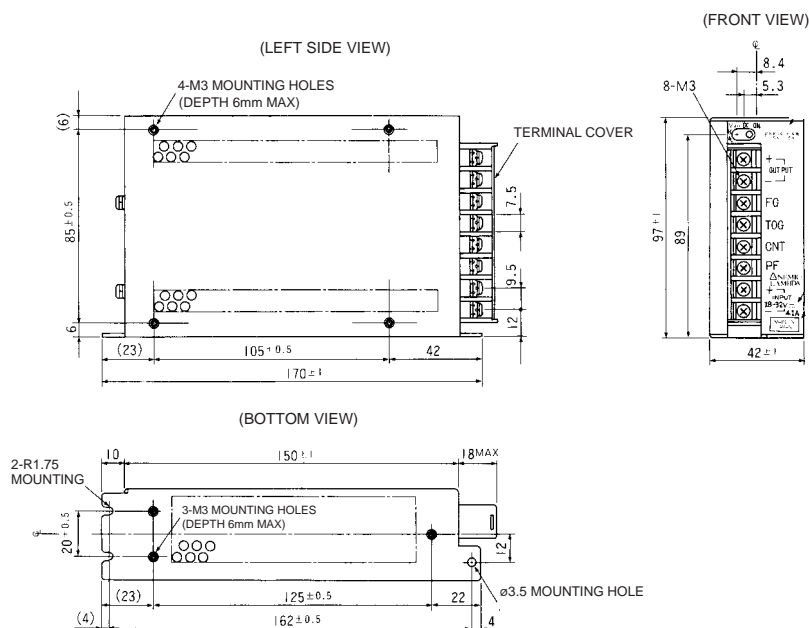
GO!!



P134

(Unit: mm)

■ **DSR50**



### ●Recommended Noise Filter



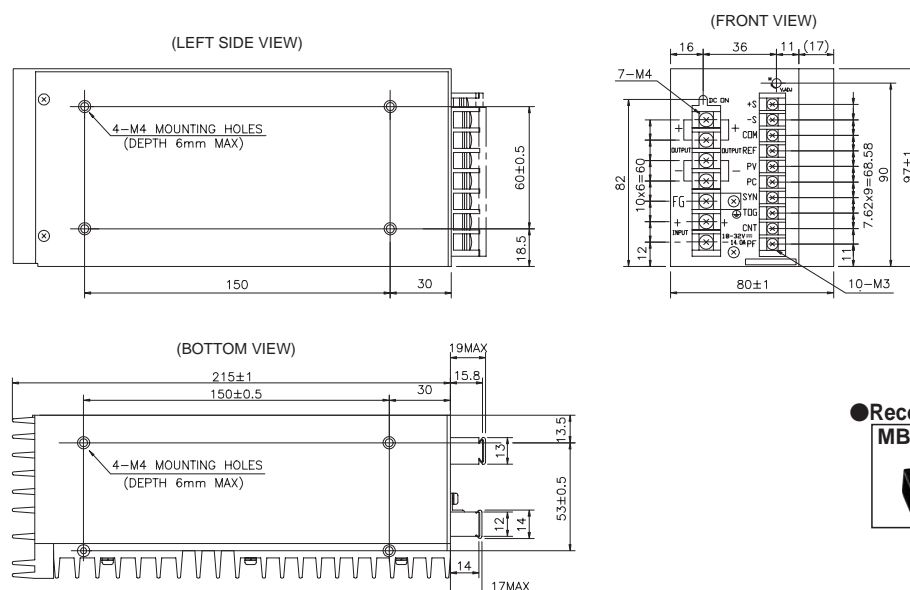
GO!!



**P134**

(Unit: mm)

■ **DSR180**



### ●Recommended Noise Filter



GO!!



**P137**

(Unit: mm)

# DSR (Input : 110VDC)-SERIES

Single output 20W ~ 35W

**LAMBDA**  
DENSEI-LAMBDA



## Model name

# DSR 35-5-110

Input voltage: 110: 70 ~ 143VDC  
Nominal output voltage: 2 ~ 48V  
Name of series: Output power: 20W, 35W

## Features

- 110VDC input, Single output
- Long life and high reliability  
Over 10 years lifetime at 40°C, full load  
Vibration: 5G max.
- Wide operating temperature range: -20 ~ +71°C
- Low input surge current 3.7A

## Specifications

1. Input voltage range	DC 70 ~ 143V
2. Output voltage range	± 10%
3. Line regulation	0.4% (DC18 ~ 32V/DC32 ~ 63V, at constant load/output 2V : 20mV)
4. Load regulation	0.4% (No load – full load, at constant input voltage/output 2V : 20mV)
5. Cooling	Convection cooling
6. Operating ambient temperature (Standard mounting)	-20 ~ +71°C
7. Withstand voltage	Input-output: 2.5kVAC, input-FG: 2.5kVAC for 1 min.(20mA), Output-FG: 500VAC for 1 min.(100mA)
8. Vibration	When not operating 10 ~ 55Hz, amplitude 0.825mm constant (MAX. 5G), Sweep for 1 min., X, Y and Z axes for 1 hour
9. Functions	Over voltage protection, Over current protection, Thermal protection, Remote on/off control Low input protection, Power failure (Low output voltage detection signal)

## Product lineup

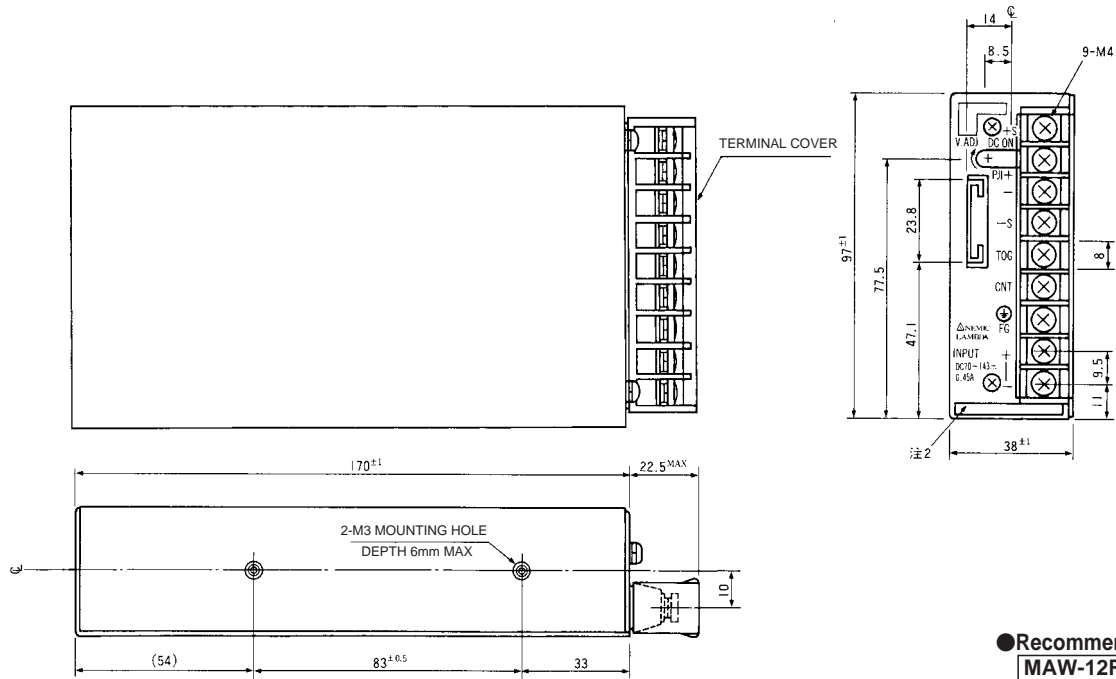
Model name		Nominal output voltage	Max. output current	Max. output power	UL	CSA
DSR20	DSR20-2-110	2V	4.0A	8.0W	△	△
	DSR20-5-110	5V	4.0A	20.0W	△	△
	DSR20-6-110	6V	3.3A	19.8W	△	△
	DSR20-12-110	12V	1.7A	20.4W	△	△
	DSR20-15-110	15V	1.4A	21.0W	△	△
	DSR20-24-110	24V	0.9A	21.6W	△	△
	DSR20-40-110	40V	0.5A	20.0W	△	△
	DSR20-48-110	48V	0.4A	19.2W	△	△
DSR35	DSR35-2-110	2V	7.0A	14.0W	△	△
	DSR35-5-110	5V	7.0A	35.0W	△	△
	DSR35-6-110	6V	6.0A	36.0W	△	△
	DSR35-12-110	12V	3.0A	36.0W	△	△
	DSR35-15-110	15V	2.6A	39.0W	△	△
	DSR35-24-110	24V	1.8A	43.2W	△	△
	DSR35-40-110	40V	1.0A	40.0W	△	△
	DSR35-48-110	48V	0.9A	43.2W	△	△

- Request customer specification for further details of specifications, outline, characteristics, etc.  
Read the instruction manual before usage.
- Contact us about delivery before ordering.

△ : Conforms to safety standard

# DSR-SERIES

## ■ DSR20 (Input:110VDC)



### ●Recommended Noise Filter

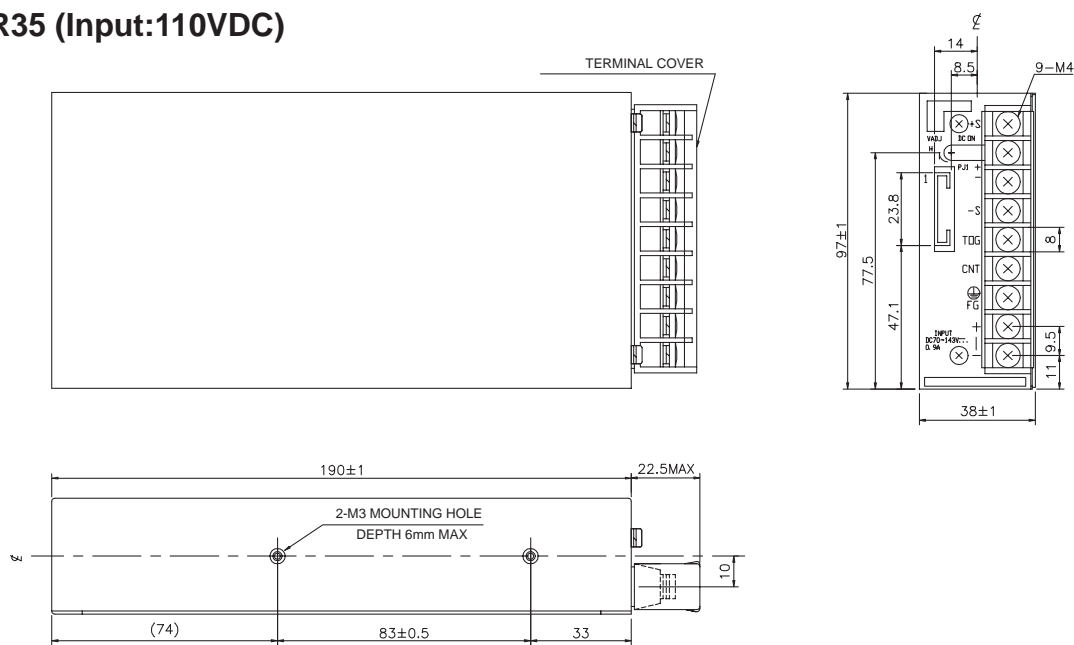
MAW-12R5-22



GO!!  
P134

(Unit: mm)

## ■ DSR35 (Input:110VDC)



### ●Recommended Noise Filter

MAW-1201-22



GO!!  
P134

(Unit: mm)