



SOT-89 Encapsulate Three-terminal Voltage Regulator

CJ78L15 Three-terminal positive voltage regulator

FEATURES

Maximum Output current

I_{OM} : 0.1 A

Output voltage

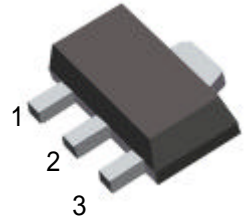
V_O : 15 V

SOT-89

1. OUT

2. GND

3. IN



ABSOLUTE MAXIMUM RATINGS (Operating temperature range applies unless otherwise specified)

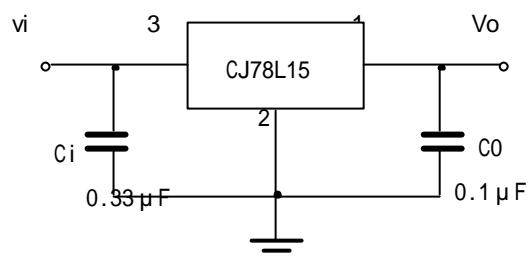
Parameter	Symbol	Value	Units
Input Voltage	V_i	30	V
Operating Junction Temperature Range	T_{OPR}	0-+150	
Storage Temperature Range	T_{STG}	-55-+150	

ELECTRICAL CHARACTERISTICS

($V_i=23V, I_o=40mA, 0 < T_j < 125^\circ C, C_1=0.33 \mu F, C_o=0.1 \mu F$, unless otherwise specified)

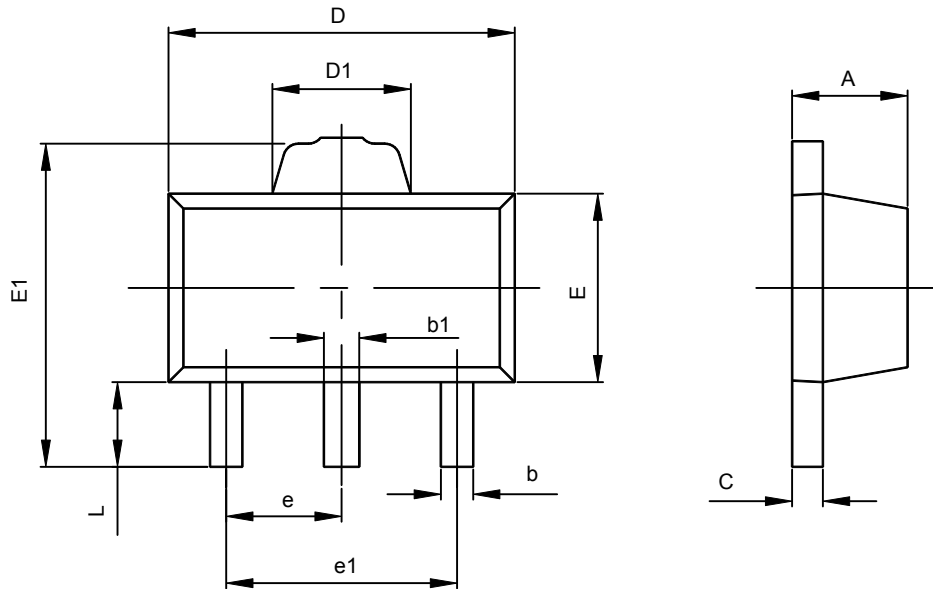
Parameter	Symbol	Test conditions	MIN	TYP	MAX	UNIT
Output voltage	V_O	$T_j=25^\circ C$	14.4	15	15.6	V
		17.5V V_i 30V, $I_o=1mA-40mA$	14.25	15	15.75	V
		$V_i=23V, I_o=1mA-70mA$	14.25	15	15.75	V (note)
Load Regulation	V_O	$T_j=25^\circ C, I_o=1mA-100mA, V_i=23V$		25	150	mV
		$T_j=25^\circ C, I_o=1mA-40mA, V_i=23V$		15	75	mV
Line regulation	V_O	17.5V V_i 30V, $T_j=25^\circ C, I_o=40mA$		65	300	mV
		19V V_i 30V, $T_j=25^\circ C, I_o=40mA$		58	250	mV
Quiescent Current	I_q			4.6	6.5	mA
Quiescent Current Change	I_q	19V V_i 30V, $I_o=40mA$			1.5	mA
	I_q	1mA I_o 40mA, $V_i=23V$			0.1	mA
Output Noise Voltage	V_N	10Hz f 100KHz, $T_s=25^\circ C$		82		μV
Ripple Rejection	RR	18.5V V_i 28.5V, f=120Hz, 25 T_j 125	34	39		dB
Dropout Voltage	V_d	$T_j=25^\circ C$		1.7		V

TYPICAL APPLICATION



Note: Bypass capacitors are recommended for optimum stability and transient response and should be located as close as possible to the regulators.

SOT-89-3L PACKAGE OUTLINE DIMENSIONS



Symbol	Dimensions In Millimeters		Dimensions In Inches	
	Min	Max	Min	Max
A	1.400	1.600	0.055	0.063
b	0.320	0.520	0.013	0.020
b1	0.360	0.560	0.014	0.022
c	0.350	0.440	0.014	0.017
D	4.400	4.600	0.173	0.181
D1	1.400	1.800	0.055	0.071
E	2.300	2.600	0.091	0.102
E1	3.940	4.250	0.155	0.167
e	1.500TYP		0.060TYP	
e1	2.900	3.100	0.114	0.122
L	0.900	1.100	0.035	0.043