

4855452 INTERNATIONAL RECTIFIER

55C 04900

D

Data Sheet No. PD-2.003C

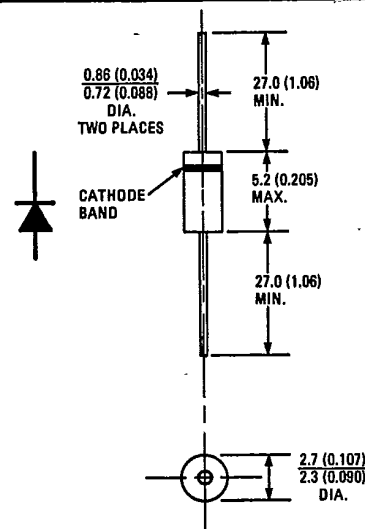
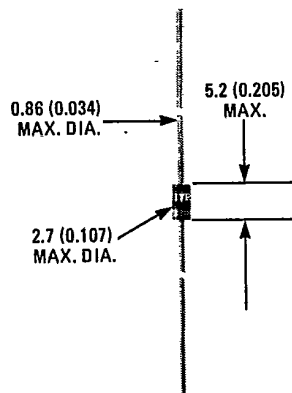
INTERNATIONAL RECTIFIER **1N2069, A SERIES****750 mA Silicon Rectifier Diodes****Major Ratings and Characteristics**

	1N2069	1N2069A	Units
$I_F(AV)$ @ Max. T_A	750*	750*	mA
	25*	25*	°C
I_{FSM} 50 Hz	21	21	A
60 Hz	22*	22*	A
$I^2\sqrt{t}$	31.2	31.2	$A^2\sqrt{s}$
$I_R(AV)$	200*	50*	mA
T_J range	-30 to 100*		°C
V_{RRM} range	200 to 600*		V

Description/Features

- 2 series in molded case - 1N2069, 1N2069A
"A" version offers lower reverse current

*JEDEC registered value.

B**CASE STYLE AND DIMENSIONS**

Case Style DO-204AL (DO-41)
All Dimensions in Millimeters and (Inches)

4855452 INTERNATIONAL RECTIFIER

55C 04901 D

1N2069,A Series

INTERNATIONAL RECTIFIER 

T-01-11

VOLTAGE RATINGS

Part Numbers	V _{RRM} — Max. Repetitive Peak Reverse Voltage (V)	V _{R(RMS)} — Max. RMS Reverse Voltage (V)	V _R — Max. DC Blocking Voltage (V)
1N2069, A	200*	140	200*
1N2070, A	400*	280	400*
1N2071, A	600*	420	600*

ELECTRICAL SPECIFICATIONS

	1N2069	1N2069A	Units	Conditions
I _{F(AV)} Max. average forward current	750*	750*	mA	180° sinusoidal conduction @ T _A = 25°C max.*
I _{FSM} Max. peak one cycle, non-repetitive surge current	21	21	A	Half cycle 50 Hz sine wave or 6 ms rectangular pulse
	22*	22*		Half cycle 60 Hz sine wave or 5 ms rectangular pulse
I ² √t Max. I ² √t for individual device fusing ①	31.2	31.2	A ² √s	t = 0.1 to 10 ms with V _{RRM} following surge = 0.
V _{FM} Max. peak forward voltage	1.2*	1.0*	V	T _A = 25°C, I _F = 0.5A
I _{R(AV)} Max. average reverse current	200*	50*	μA	T _A = 100°C I _{F(AV)} = 0.75A V _R = Rated V _{RRM}

THERMAL-MECHANICAL SPECIFICATIONS

T _A	Max. operating ambient temperature range	-30* to 100*	°C	
T _{stg}	Max. storage temperature range	-30* to 100*	°C	
wt	Approximate weight	0.35 (0.0125)	g (oz.)	
Case Style		DO-204AL (DO-41)		JEDEC

*JEDEC registered value.

① I²t for time t_x = I²√t • √t_x.

4855452 INTERNATIONAL RECTIFIER

55C 04902 D



1N2069, A Series

T-01-11

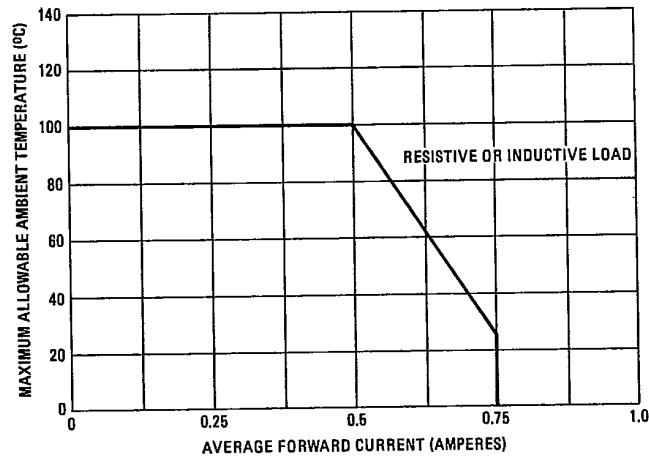


Fig. 1 - Average Forward Current Vs. Maximum Allowable Ambient Temperature

B

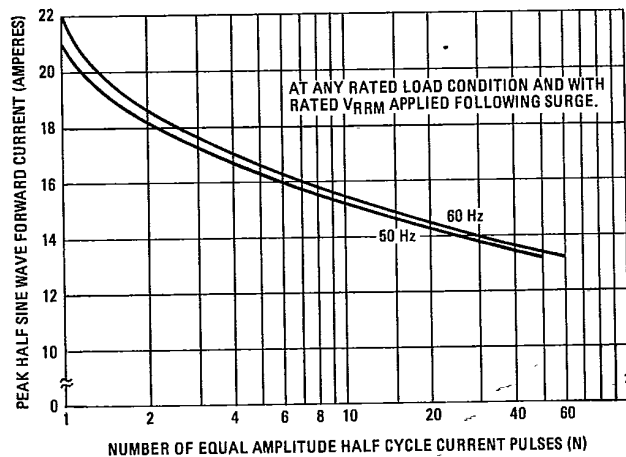


Fig. 2 - Maximum Non-Repetitive Surge Current Vs. Number of Current Pulses