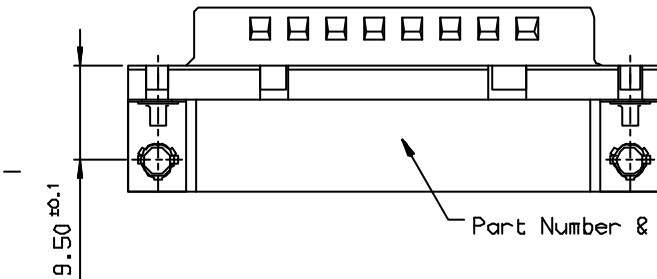
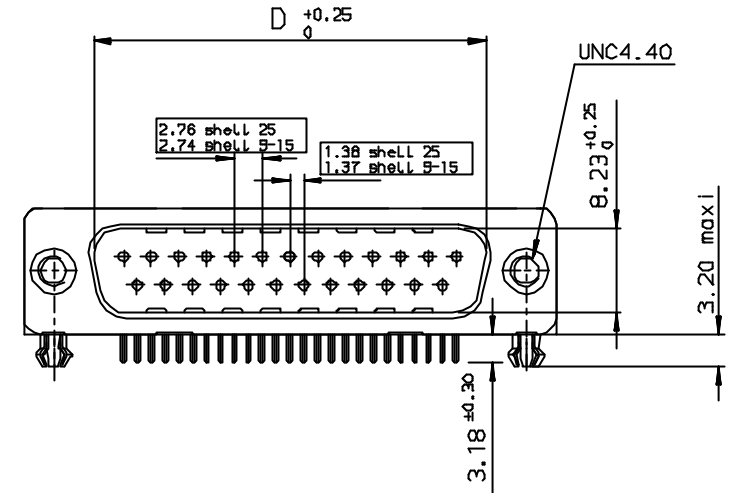
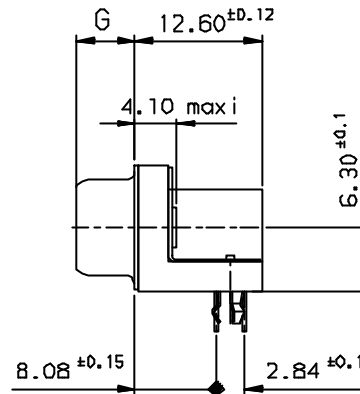
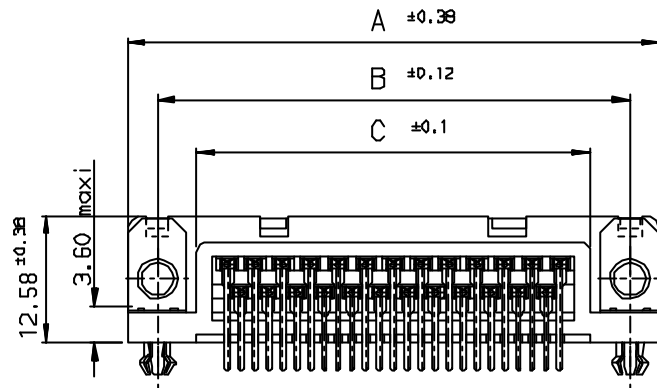


Tous droits strictement réservés. Reproduction ou communication sans l'autorisation écrite de la FCI est formellement interdite.  
All rights strictly reserved. Reproduction or communication without written authority from the property of FCI. Copyright FCI.

FCI

All rights strictly reserved. Reproduction or communication without written authority from the property of FCI. Copyright FCI.

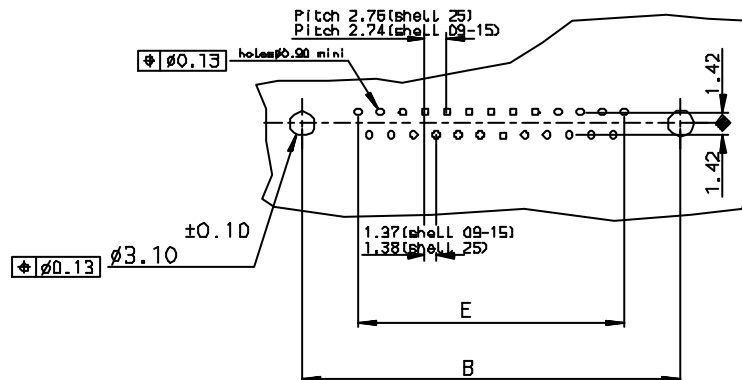


PC card drilling dimensions (after plating)  
(thickness 1.50 ± 0.20 mm)

Pull parts							
SHELL	A ± 0.38	B ± 0.12	C ± 0.10	D ± 0.25	E ± 0.07	G ± 0.25	PART NUMBER
09	30.81	24.99	16.96	16.79	10.96	5.90	D09P33E4GX00**
15	39.14	33.32	25.18	25.12	19.18	5.90	D15P33E4GX00**
25	53.03	47.04	39.12	38.84	33.12	5.70	D25P33E4GX00**

GENERAL CHARACTERISTICS, SEE DRAWING C01-8646-0000

LF FOR LEAD FREE



Lib	Eon no	Dr	date
c	105-0124	JS	27/7/05

Dr JOHN SLEESA		27/10/97	Product Family	✓	Tolerance LINEAR ± 0.1 ANGULAR ± 1°	Projection A3	MM
Eng GEORGE VJ		27/10/97	Spec ref				
Chr GEORGE VJ		27/7/05	Material				
Appr K Somasundaram		27/7/05					
Title MALE CONNECT. DELTA D right angle with nut, harpoon & metal plate		Dwg no C01-8646-0158-2		Rev. c			
Catalog no DELTA-D		CUSTOMER COPY		Sheet 1 of 1			