



# SAW Components

Data Sheet B4058

Data Sheet

A large, stylized, 3D-rendered "EPCOS" logo in white, tilted diagonally. The background is a dark, grayscale image of a globe with a grid of latitude and longitude lines, creating a sense of global reach and technology.



## SAW Components

B4058

## Low Loss Filter

1575.0 MHz

## Preliminary Data Sheet



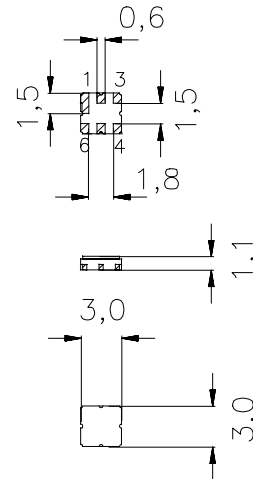
Ceramic package DCC6D

### Features

- Low loss RF filter for GPS receivers
- Usable passband 20 MHz
- Low insertion attenuation, low amplitude ripple
- Unbalanced to balanced operation
- Ceramic package for **Surface Mounted Technology (SMT)**

### Terminals

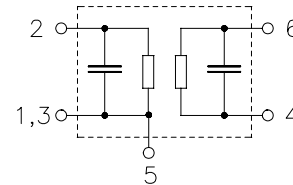
- Ni, gold-plated



Dimensions in mm, approx. weight 0,037 g

### Pin configuration

2	Input, unbalanced
4, 6	Output, balanced
1, 3, 5	To be grounded
1, 3, 5	Case ground



Type	Ordering code	Marking and Package according to	Packing according to
B4058	B39162-B4058-U510	C61157-A7-A68	F61074-V8089-Z000

Electrostatic Sensitive Device (ESD)

### Maximum ratings

Operable temperature range	$T$	-40 / +85	°C	
Storage temperature range	$T_{stg}$	-40 / +85	°C	
DC voltage	$V_{DC}$	0	V	
Source power	$P_S$	0	dBm	source impedance 50 $\Omega$



# SAW Components

B4058

## Low Loss Filter

1575.0 MHz

Preliminary Data Sheet



### Characteristics

Operating temperature range:  $T = -40\text{ °C to }+85\text{ °C}$   
Terminating source impedance:  $Z_S = 50\ \Omega$   
Terminating load impedance:  $Z_L = 50\ \Omega$  (balanced)

			min.	typ.	max.	
<b>Center frequency</b>	$f_c$		—	1575,0	—	MHz
<b>Maximum insertion attenuation</b>	$\alpha_{\max}$					
	1565,0 ... 1585,0 MHz		—	4,0	4,5	dB
<b>Amplitude ripple (p-p)</b>	$\Delta\alpha$					
	1565,0 ... 1585,0 MHz		—	1,2	1,5	dB
<b>Absolute attenuation</b>	$\alpha$					
	0,0 ... 1000,0 MHz		40,0	47,0	—	dB
	1000,0 ... 1435,0 MHz		32,0	39,0	—	dB
	1435,0 ... 1525,0 MHz		25,0	36,0	—	dB
	1525,0 ... 1540,0 MHz		7,0	36,0	—	dB
	1610,0 ... 1625,0 MHz		7,0	19,0	—	dB
	1625,0 ... 1715,0 MHz		25,0	32,0	—	dB
	1715,0 ... 1785,0 MHz		34,0	40,0	—	dB
	1785,0 ... 2200,0 MHz		30,0	36,0	—	dB
	2200,0 ... 2500,0 MHz		27,0	34,0	—	dB
	2500,0 ... 4000,0 MHz		18,0	25,0	—	dB



SAW Components

B4058

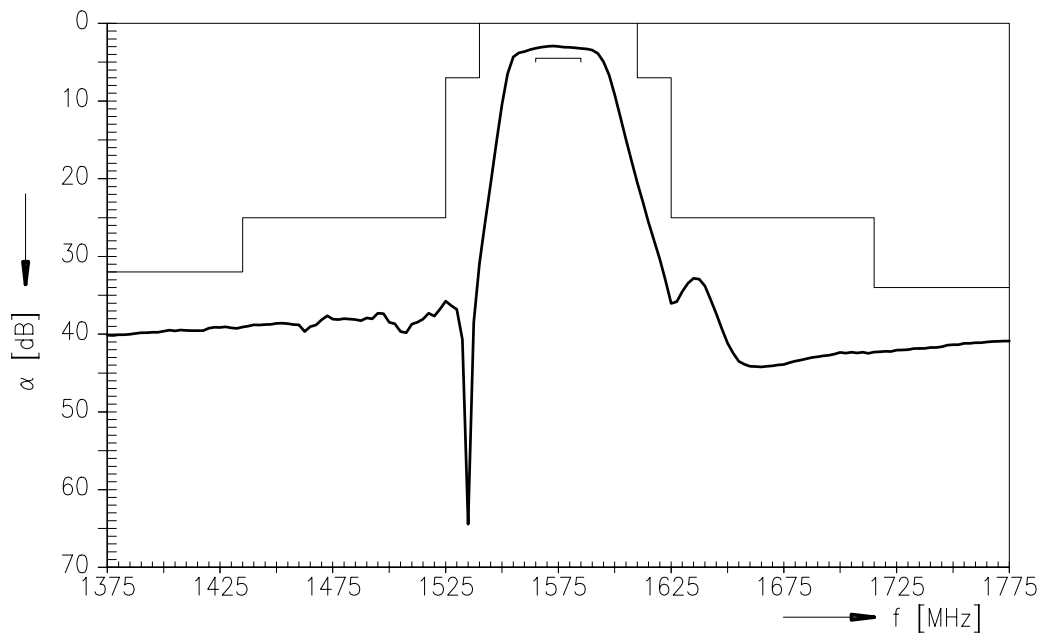
Low Loss Filter

1575.0 MHz

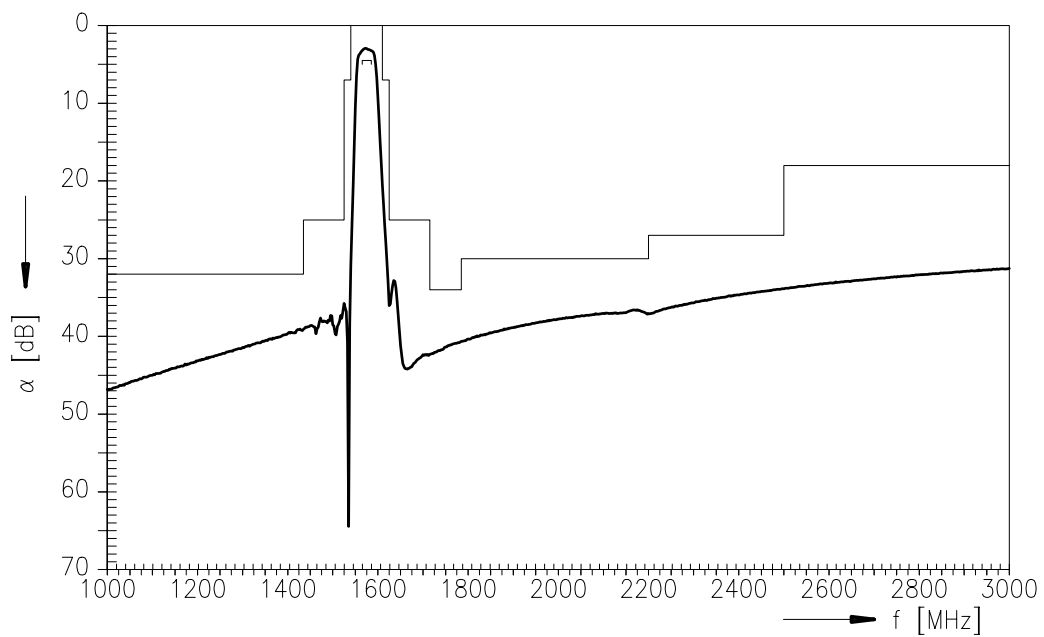
Preliminary Data Sheet



### Transfer function



### Transfer function (wide band)





<b>SAW Components</b>	<b>B4058</b>
<b>Low Loss Filter</b>	<b>1575.0 MHz</b>
<b>Preliminary Data Sheet</b>	<b>SMD</b>

**Published by EPCOS AG**

**Surface Acoustic Wave Components Division, SAW MC IS PD WL**

**P.O. Box 80 17 09, D-81617 München**

© EPCOS AG 2000. All Rights Reserved.

As far as patents or other rights of third parties are concerned, liability is only assumed for components per se, not for applications, processes and circuits implemented within components or assemblies.

The information describes the type of component and shall not be considered as assured characteristics.

Terms of delivery and rights to change design reserved.

For questions on technology, prices and delivery please contact the sales offices of EPCOS AG or the international representatives.

Due to technical requirements components may contain dangerous substances. For information on the type in question please also contact one of our sales offices.