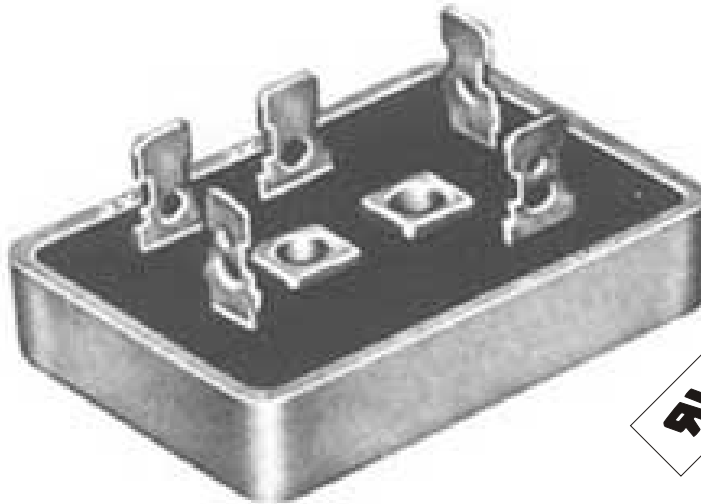





PBT

MINIBRIDGE<sup>®</sup>  
27.5 AMPERES  
THREE-PHASE FULL-WAVE BRIDGES  
HEAT SINK AND CHASSIS MOUNTING



 This mark indicates recognition under the component program of Underwriters Laboratories, Inc.

PBT SERIES

PRV/Leg	50V	100V	200V	400V	600V	800V	1000V	1200V	1400V
Type No.	PBT05	PBT10	PBT20	PBT40	PBT60	PBT80	PBT100	PBT120	PBT140

ELECTRICAL CHARACTERISTICS PER LEG  
(at T<sub>A</sub>=25 °C Unless Otherwise Specified)

Max. Forward Voltage Drop V <sub>F</sub> =1.0 V @ I <sub>F</sub> =	3	Amp
Max. DC Reverse Current @ PRV and 25 °C, I <sub>R</sub>	10	μA
Max. DC Reverse Current @ PRV and 100 °C, I <sub>R</sub>	100	μA
Max. Peak Surge Current, I <sub>FSM</sub> (8.3ms)	300	Amp
Storage Temperature Range, T <sub>STG</sub>	-55 to +175	°C
Thermal Resistance (Total), R <sub>θj-c</sub>	2.3typ.	°C/W

EDI reserves the right to change these specifications at any time without notice.

Figure 1  
CURRENT DERATING

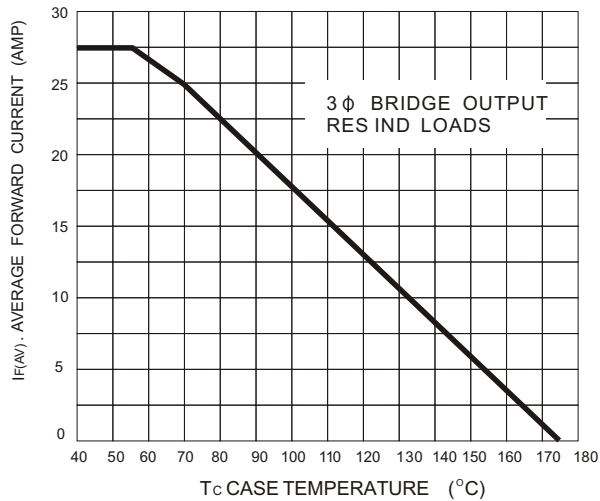


Figure 2  
POWER DISSIPATION

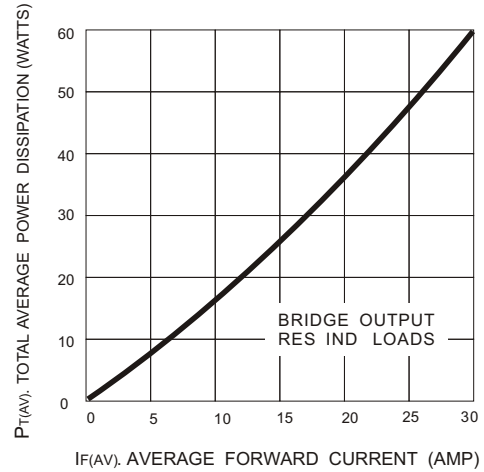


Figure 3  
NON-REPETITIVE SURGE CURRENT

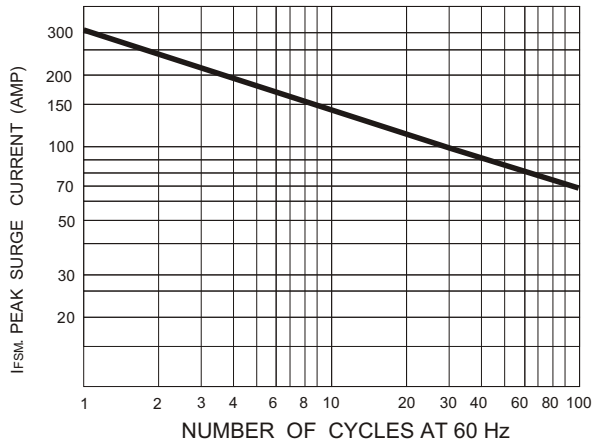
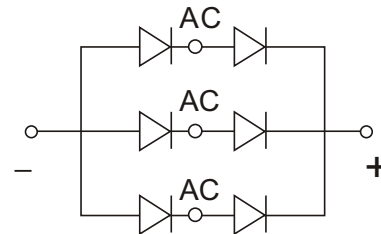
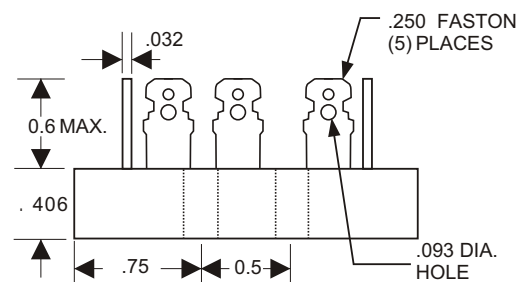
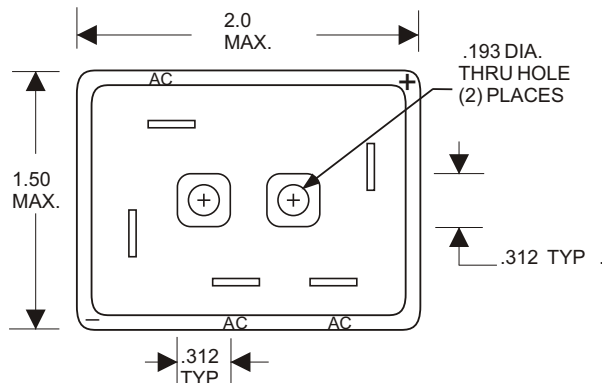


Figure 4  
SCHEMATIC



## PBT SERIES MECH. OUTLINE

Dielectric test voltage 1,500 volts rms, max. 50-60 Hz



NOTE: 1. Corrosion resistant terminals designed for .250 female quick connector, wrap around or solder.  
2. A thin film of silicone thermal compound is recommended between the Minibridge® case and mounting surface for improved thermal conduction.

**ELECTRONIC DEVICES, INC.** DESIGNERS AND MANUFACTURERS OF SOLID STATE DEVICES SINCE 1951.

21 GRAY OAKS AVENUE \* YONKERS, NEW YORK 10710 914-965-4400 \* FAX 914-965-5531 \* 1-800-678-0828

e-mail: sales@edidiodes.com \* website: <http://www.edidiodes.com>