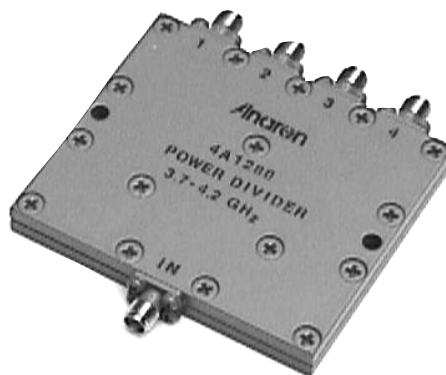


Power Dividers 4-Way

Applications

- Phased Arrays
- Antenna Feed Networks
- Image Reject Mixers
- Test Systems
- LO Power Dividers



Features

- Military Grade
- 4-Way Power Split
- In-Phase
- Connectors Per MIL-C-39012
- Rugged Aluminum Housing
- Low VSWR

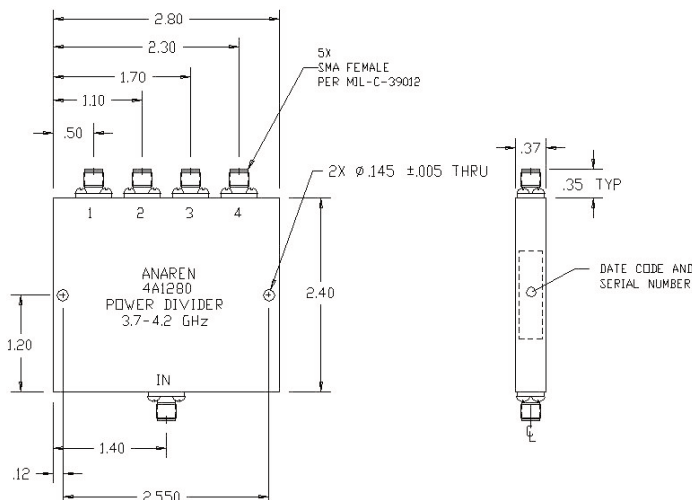
Electrical Specifications

Frequency GHz	Isolation dB Min	Insert. Loss dB Max	VSWR Max In/Out : 1
3.7 - 4.2	20	0.50	1.35/1.35
Amp. Bal. dB Max	Phase Bal. Degrees Max	Connector	Power Ave. CW Watts
0.40	6	SMA	17

Notes: *Input power with load VSWR of 1.20:1. Impedance: 50 ohms nominal. Meets MIL-E-5400 Class II requirements. Additional screening available for military and space applications.

Electrical and Mechanical Specifications subject to change without notice.

Outline Drawing



- NOTES:
1. MARKING PER MIL-STD-130
 2. FINISH: EPOXY PRIMER
BLUE EPOXY PAINT
 3. DIMENSIONS ARE IN INCHES