

## VXE1 Resistance Welded Crystal

The VXE1 features a fully hermetic resistance weld seam which offers superior protection against humidity and other environmental factors than plastic package devices. The crystal is mated to a plastic leadframe that matches the pin connections of popular plastic packaged crystals.

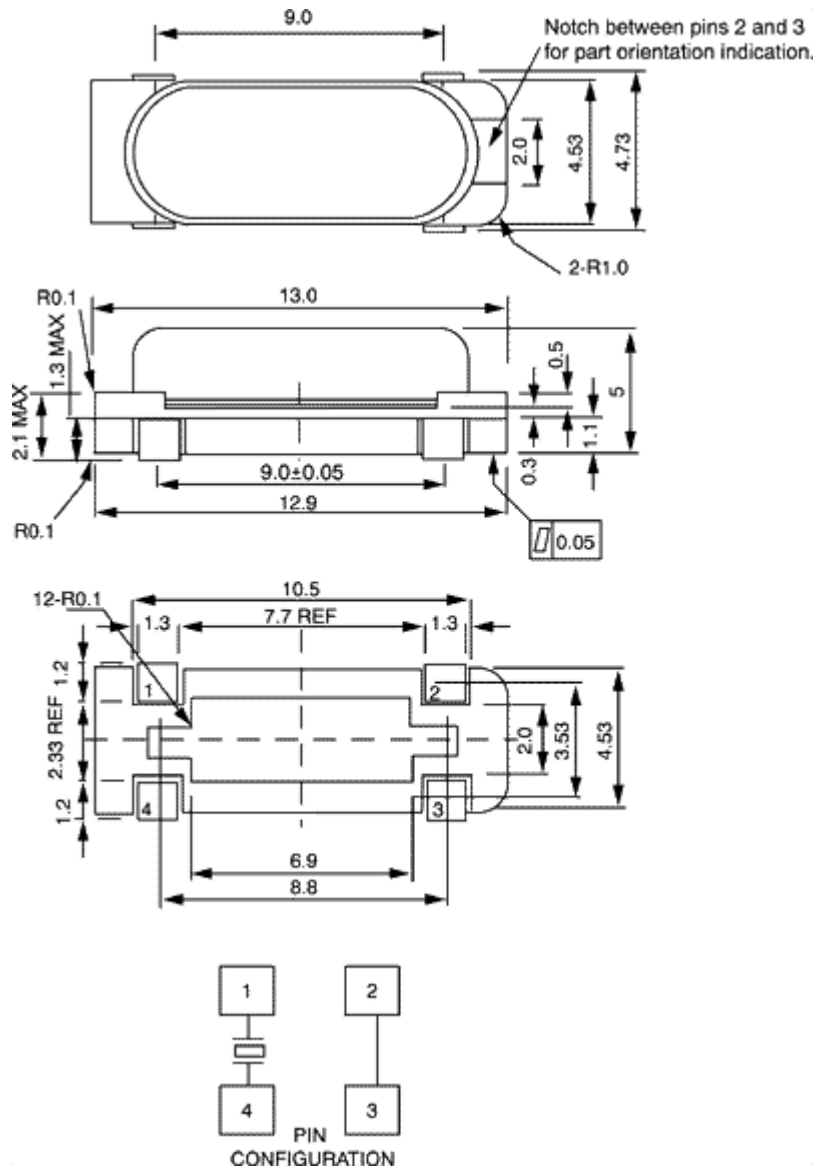


<b>Package Options</b>	<b>E1</b> = 13 x 4.7 x 5 mm tall
<b>Frequency Range</b>	10 MHz to 100 MHz
<b>Standard Frequencies</b>	See <a href="#">Standard Frequency Table</a>
<b>Mode</b>	<b>1</b> = Fundamental (10 to 40 MHz) <b>3</b> = 3 <sup>rd</sup> Overtone (40 to 100 MHz)
<b>Stability Options</b>	<b>A</b> = ±100 PPM -20°C to +70°C <b>B</b> = ±50 PPM -20°C to +70°C <b>C</b> = ±100 PPM -40°C to +85°C <b>D</b> = ±50 PPM -40°C to +85°C <b>E</b> = ±25 PPM -20°C to +70°C
<b>Load Capacitance</b>	<b>0</b> = Series Resonant <b>1</b> = 16 pF <b>2</b> = 20 pF <b>3</b> = 32 pF <b>4</b> = 18 pF <b>5</b> = 10 pF <b>6</b> = 30 pF
<b>STD Calibration Tolerance</b>	±25 PPM at +25°C Tolerances to ±10 PPM are available
<b>Equivalent Series Resistance</b>	See <a href="#">ESR Table II</a>
<b>Shunt Capacitance</b>	7 pF Maximum
<b>Drive Level</b>	10 to 100 uW
<b>Crystal Aging</b>	<5 ppm/1 <sup>st</sup> year
<b>Standard Packaging</b>	Tape and Reel (1000 pc minimum)
<b>Typical P/N</b>	<b>VXE1-1B2-16M384</b>

**E1** = 13 x 4.7 x 5 mm tall package  
**1** = Fundamental Mode  
**B** = ±50 PPM -20°C to +70°C  
**2** = 20 pF load capacitance

[Generate your own part number!](#)

We welcome your custom requests and will issue a custom part number for items that are not listed.



Dimensions in mm.